

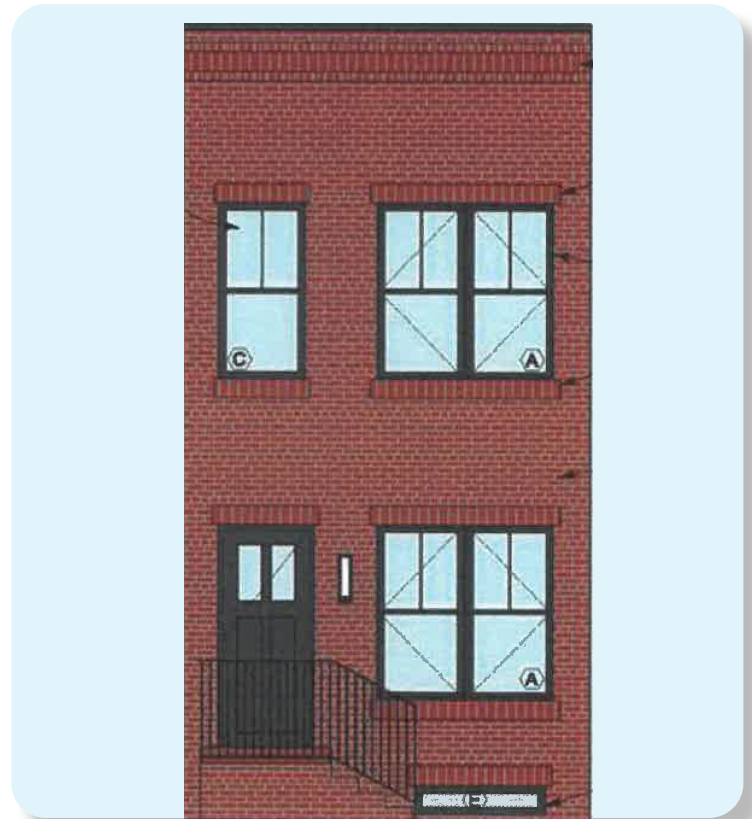
# TURN THE KEY



The Philadelphia Affordable Homeownership Program

## South Philadelphia

- 8 affordable single-family homes
- Maximum sales price of \$254,999
- Income at or below 80% Average Median Income (AMI)
- Estimated 1,350-1,400 sq. ft.
- 2 and 3 bedrooms and 2 bathrooms
- 10-year tax abatement

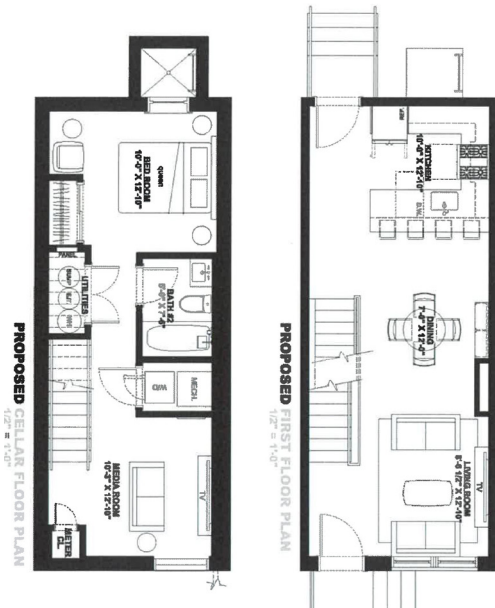


**BVG Property Group LLC**  
[www.bvgpropertygroup.com](http://www.bvgpropertygroup.com)

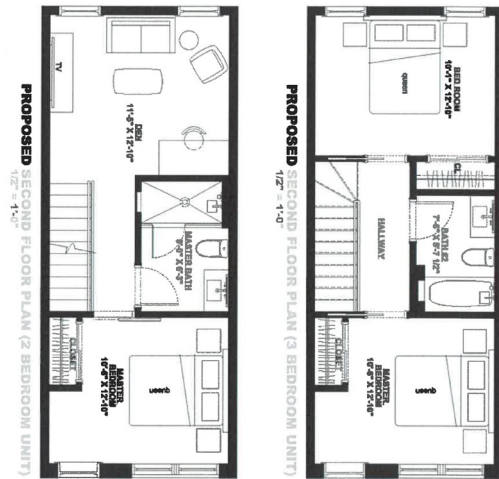


# Address Locations

Floor Plans for basement and 1<sup>st</sup> floor for all Affordable Homes



Floor Plans for 2<sup>nd</sup> floor for all Affordable Homes (with either a den or a 3<sup>rd</sup> bedroom)



## Cantrell Street

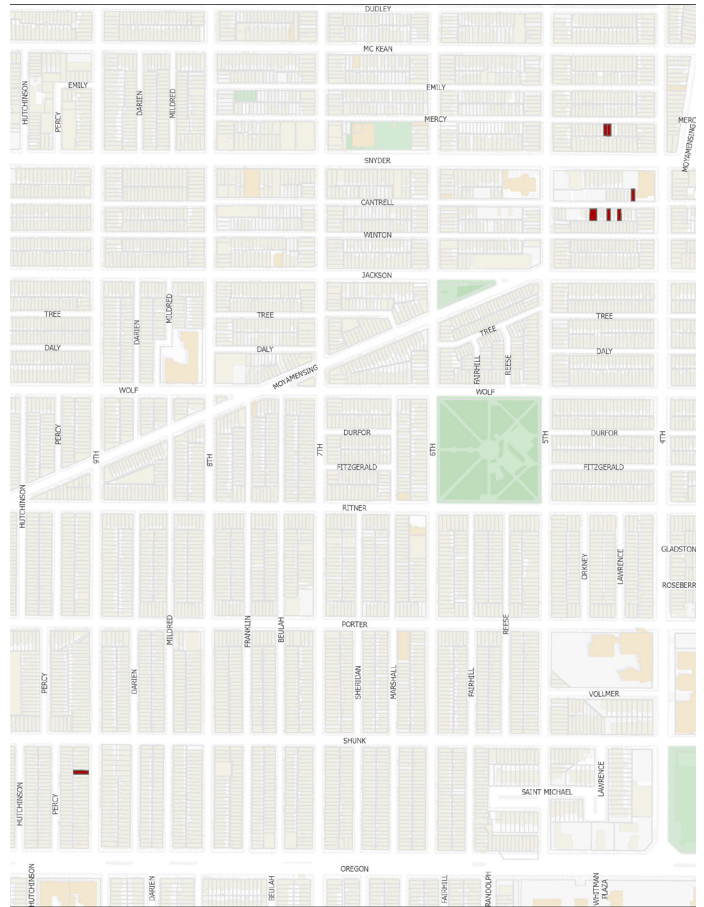
411, 418, 424, 432, 434

## Mercy Street

424, 426

## S. 9th Street

2612



**BVG Property Group LLC**  
[www.bvgpropertygroup.com](http://www.bvgpropertygroup.com)



BVG Property Group



@bvgpropertygroupllc

