

## Address Locations

### W. Thompson Street

2431, 2433, 2413, 2415, 2417, 2403, 2405, 2407

### N. 24th Street

1300, 1302, 1304, 1306, 1312, 1314, 1316, 1318

### N. Taylor Street

1203, 1224, 1212

### N. 25th Street

1201, 1317, 1319

### N. College Avenue

2301, 2303

### Jefferson Street

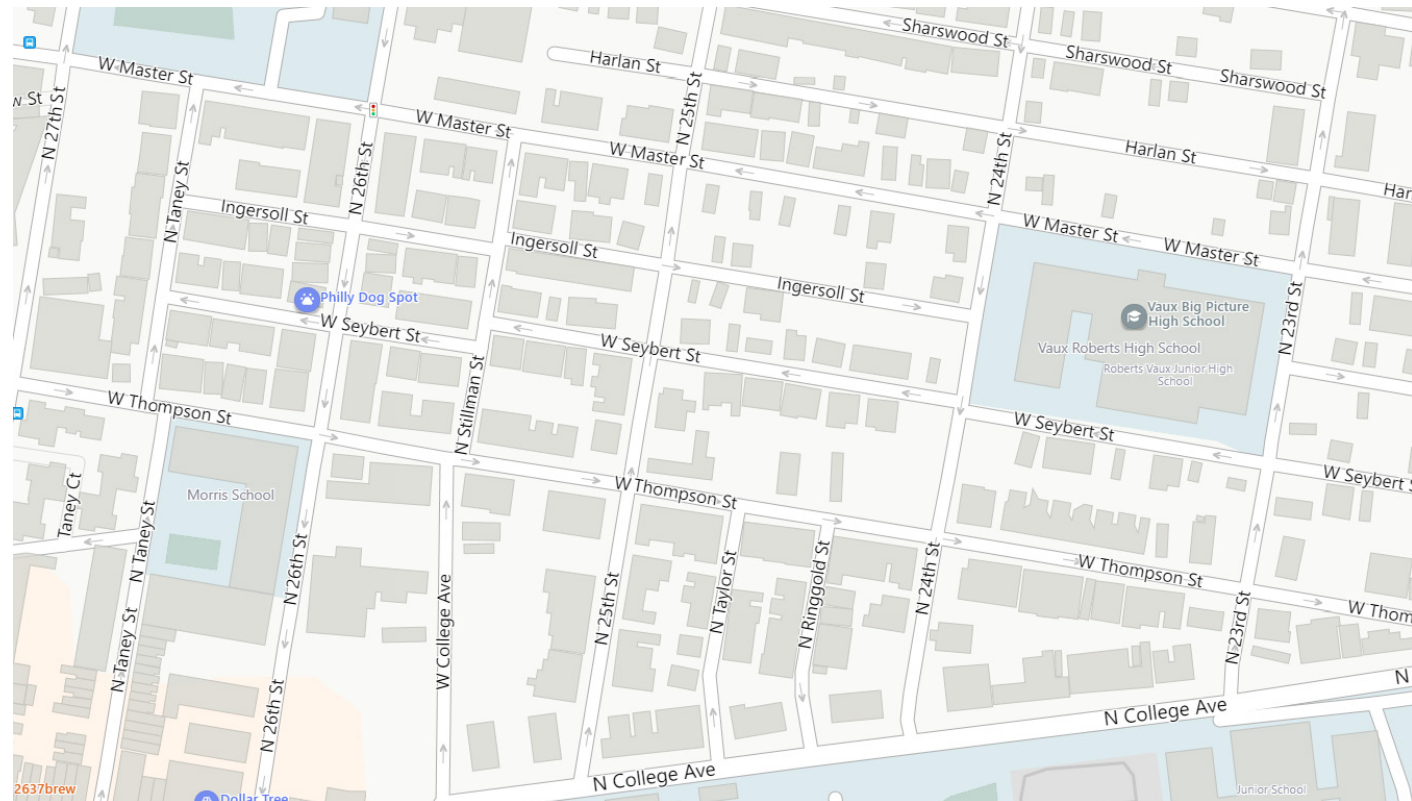
2301, 2303, 2305, 2307, 2309, 2311, 2313, 2315, 2317, 2319

### N. 23rd Street

1514, 1516, 1518, 1520, 1522, 1524, 1526, 1528, 1530, 1532, 1534, 1536, 1538

### N. Bucknell Street

1513, 1515, 1517, 1519, 1521, 1523, 1525, 1527, 1529, 1531, 1533, 1535, 1537



## Sharswood/ Blumberg

- 72 affordable single family homes
- Maximum sale price \$300,000
- 100% Average Median Income (AMI)
- 10 Year tax abatement
- Three bedrooms
- Two bathrooms
- 17 single family homes on scattered sites - \$280,000 (1100 Sq Ft)
- 19 Single-level units in multi-family building - \$250,000 (940 Sq Ft)

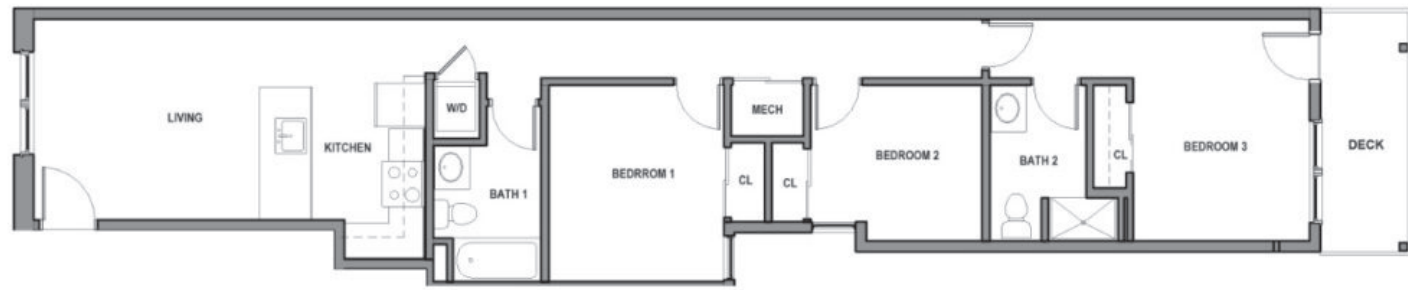


FE Girard Commons LLC  
phdcphila.org/turn-the-key

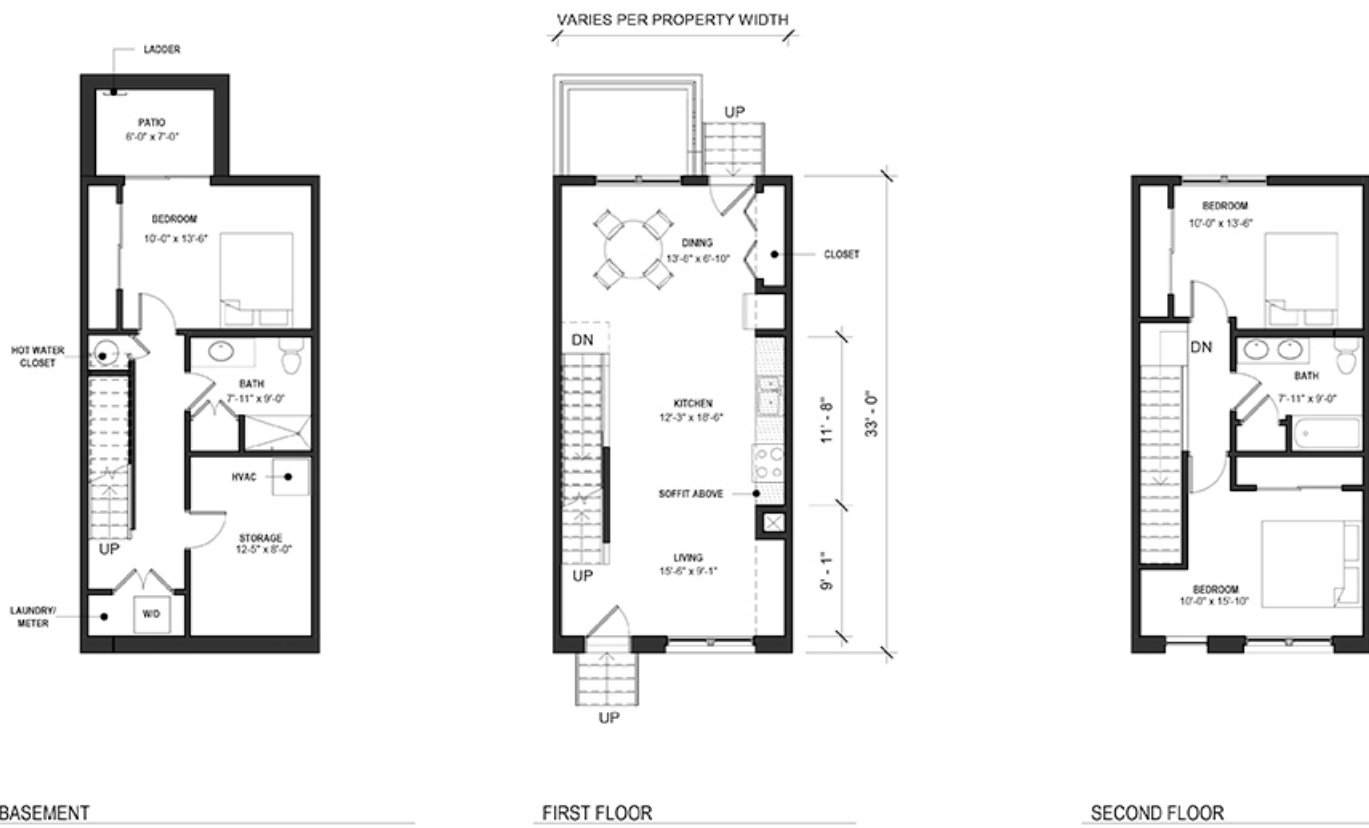
FE Girard Commons LLC  
phdcphila.org/turn-the-key



Single-level unit



Single family home



BASEMENT

FIRST FLOOR

SECOND FLOOR

