

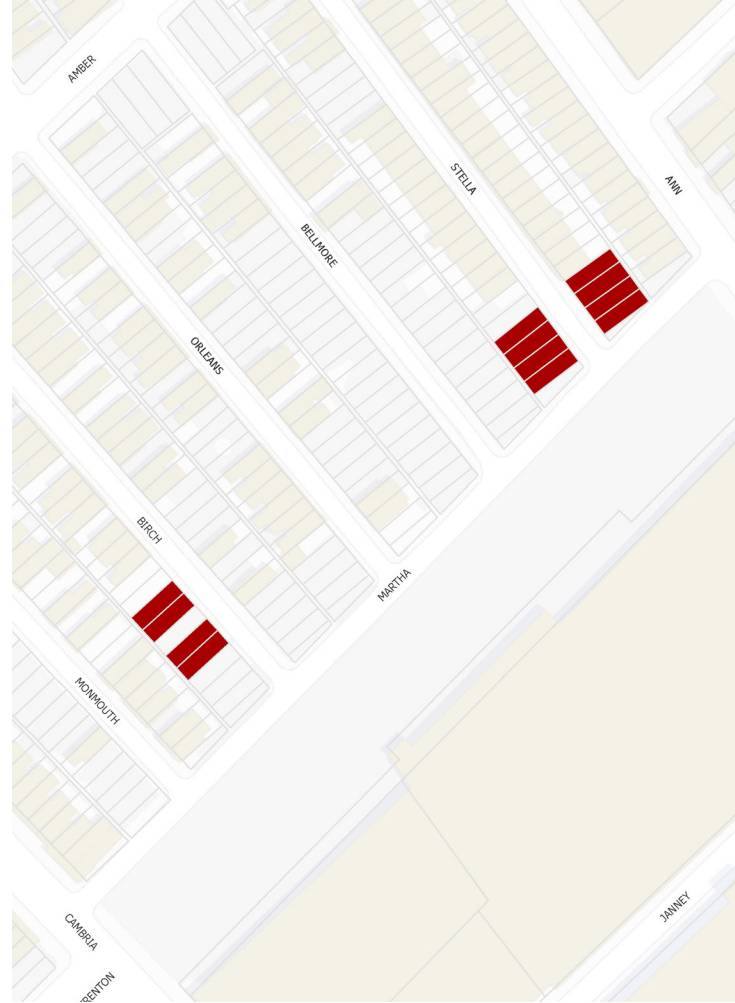
Address Locations

E. Birch Street

2148, 2150, 2154, 2156

E. Stella Street

2154, 2155, 2156, 2157, 2158, 2159, 2160, 2161



East Kensington/ Port Richmond

- 12 affordable single-family homes
- Maximum sales price of \$264,999
- Income at or below 80% Average Median Income (AMI)
- Estimated 1,350-1,400 sq. ft.
- 2 and 3 bedrooms and 2 bathrooms
- 10-year tax abatement



BVG Property Group LLC
www.bvgpropertygroup.com



BVG Property Group



@bvgpropertygroupllc



BVG Property Group LLC
www.bvgpropertygroup.com



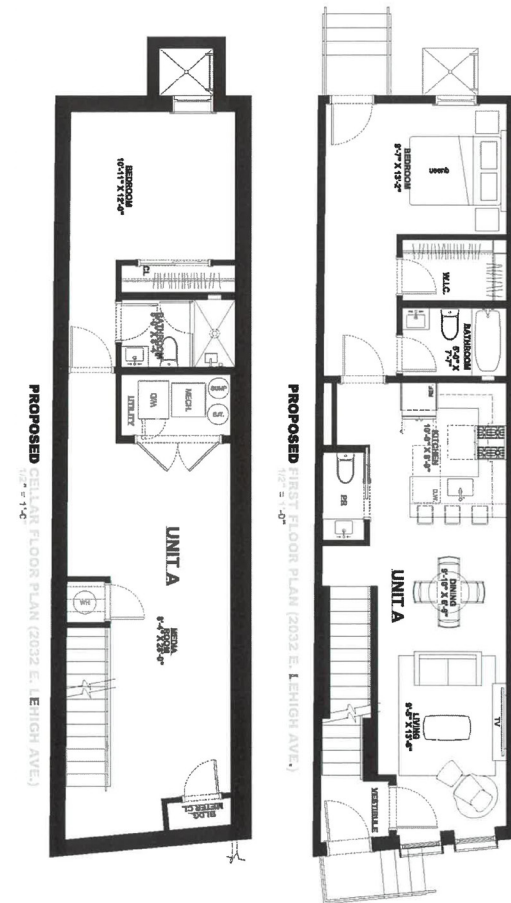
Floor Plans for basement and 1st floor for all Affordable Homes



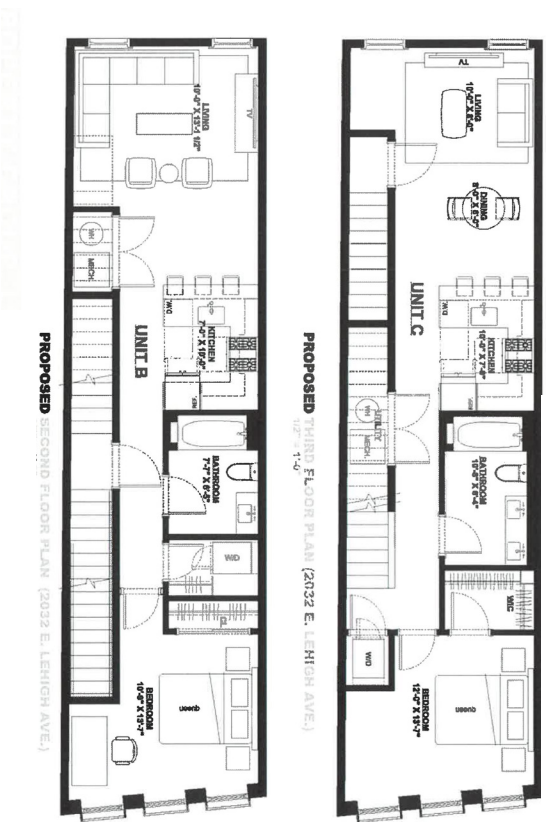
Floor Plans for 2nd floor for all Affordable Homes (with either a den or a 3rd bedroom)



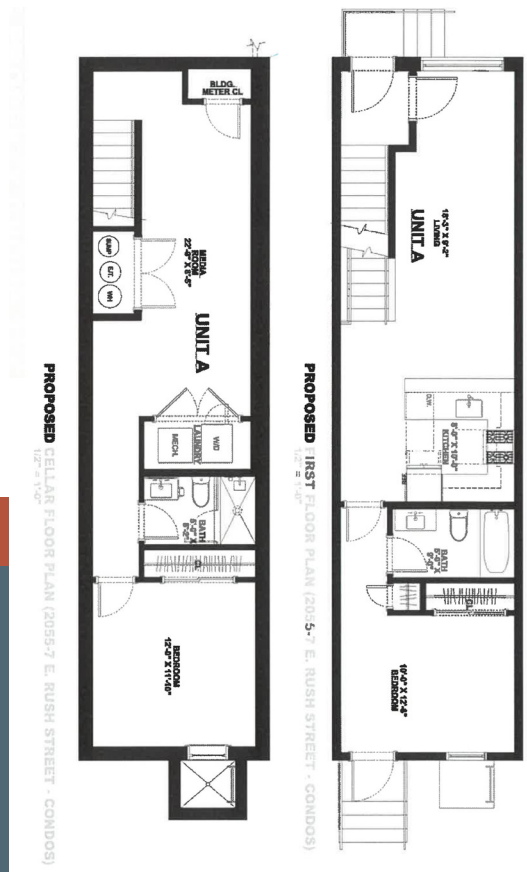
Floor Plans for Market Rate Rental Unit A at 2032 E. Lehigh Avenue



Floor Plans for Market Rate Rental Units B and C at 2032 E. Lehigh Avenue



Floor Plans for Market Rate Condo A at 2055 and 2057 E. Rush Street



Floor Plans for Market Rate Condo B at 2055 and at 2057 E. Rush Street.

