



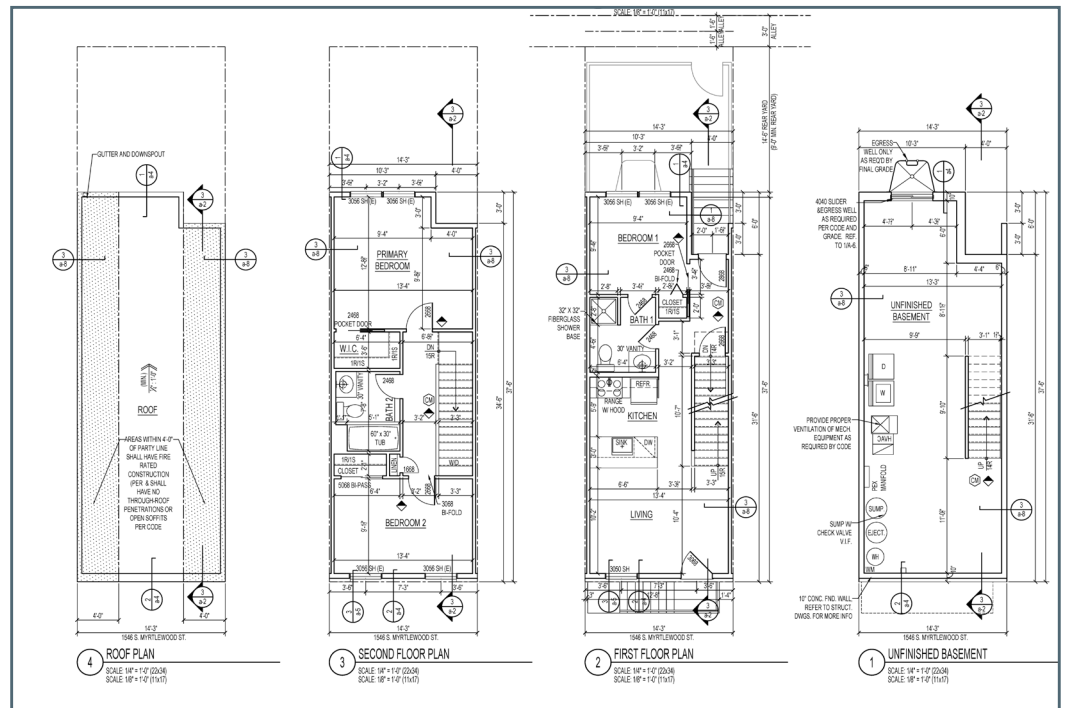
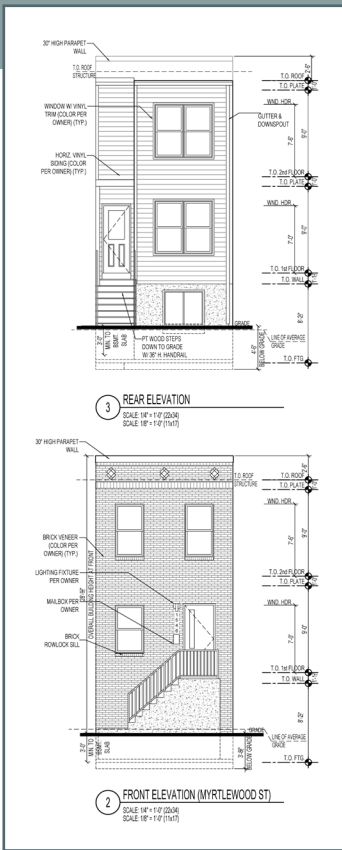
# Grays Ferry Dover/ Myrtlewood

- 17 single family homes
- Max Sales Price:  
\$250,000 (80% AMI)
- Two Stories
- Three bedrooms
- Two full bathrooms
- Unfinished basement
- Estimated 1,200 sq. ft.
- 10 year tax abatement



**BMK Properties LLC/Fine Print**  
[www.bmkhomes.com](http://www.bmkhomes.com)





## Address Locations

### S. Dover Street

1543, 1545, 1547, 1549, 1551, 1553, 1554, and 1555

### S. Myrtlewood Street

1540, 1542, 1544, 1546, 1548, 1550, 1552 and 1554

### S. 30th Street

1546

