



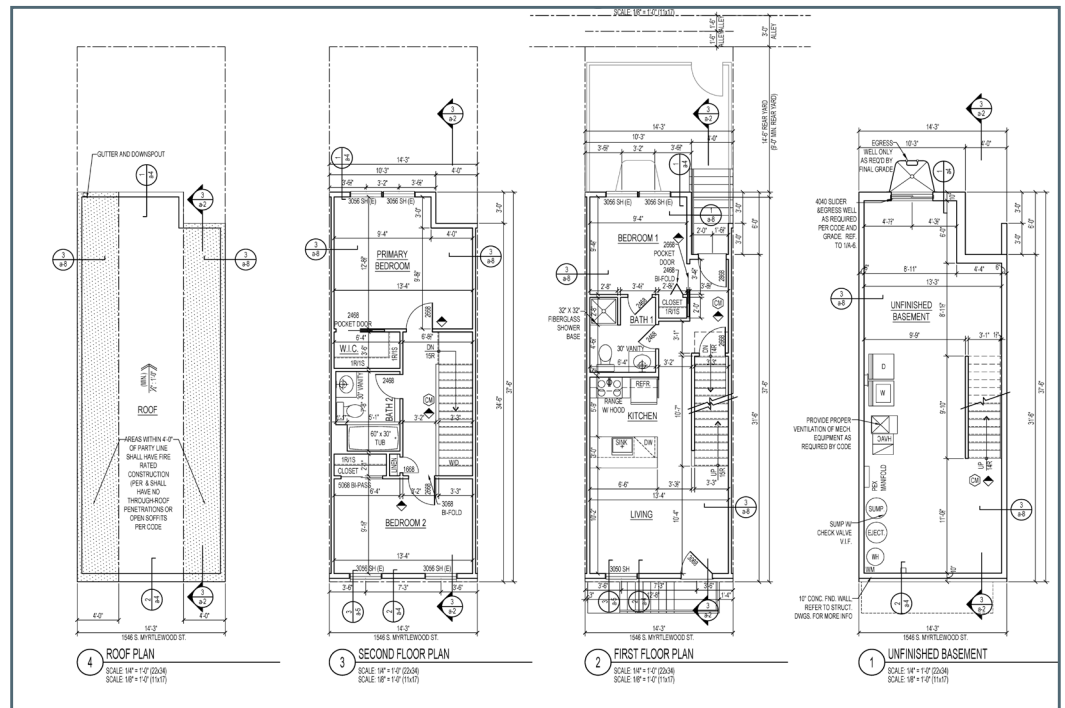
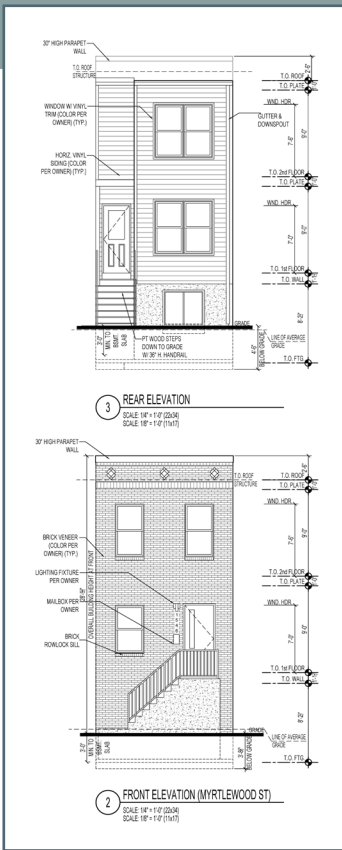
Grays Ferry Dover/ Myrtlewood

- 17 single family homes
- Max Sales Price:
\$250,000 (80% AMI)
- Two Stories
- Three bedrooms
- Two full bathrooms
- Unfinished basement
- Estimated 1,200 sq. ft.
- 10 year tax abatement



BMK Properties LLC/Fine Print
www.bmkhomes.com





Address Locations

S. Dover Street

1543, 1545, 1547, 1549, 1551, 1553, 1554, and 1555

S. Myrtlewood Street

1540, 1542, 1544, 1546, 1548, 1550, 1552 and 1554

S. 30th Street

1546

