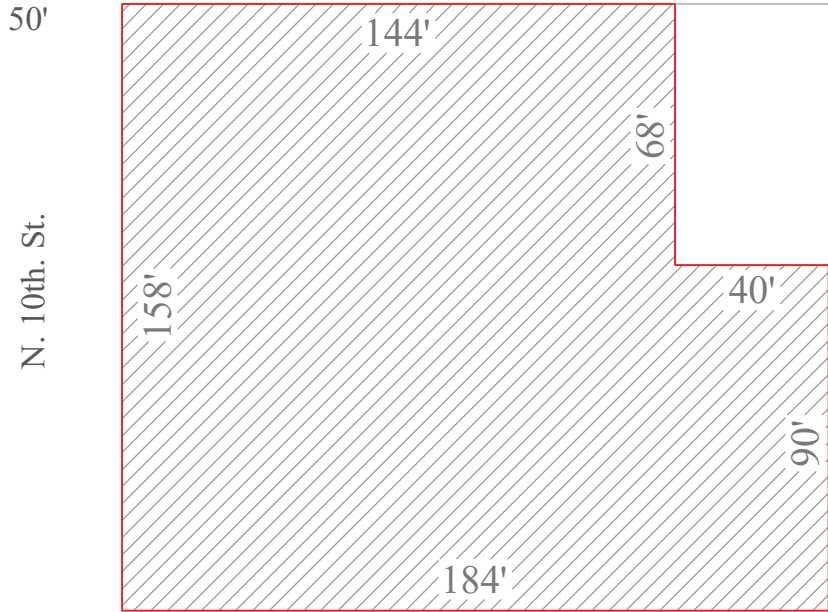


SQ.FT.	Acres
26,352	0.605

56' Cecil B. Moore Ave



*NOT TO BE USED FOR TITLE OR CONSTRUCTION PURPOSES*

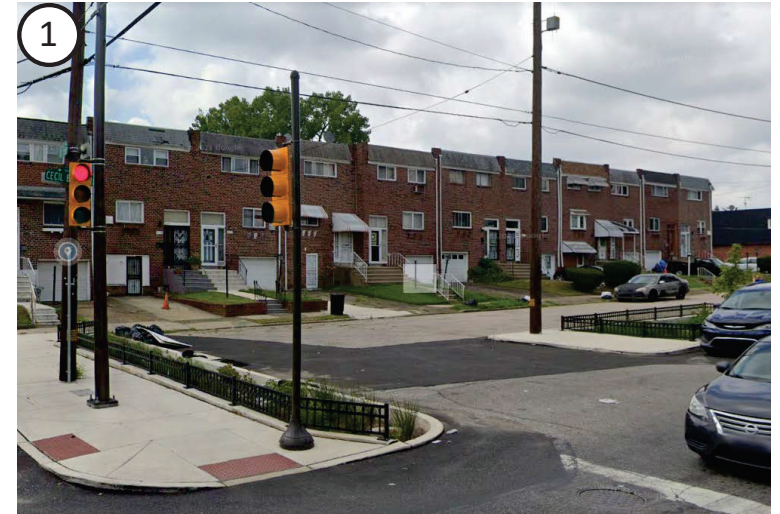
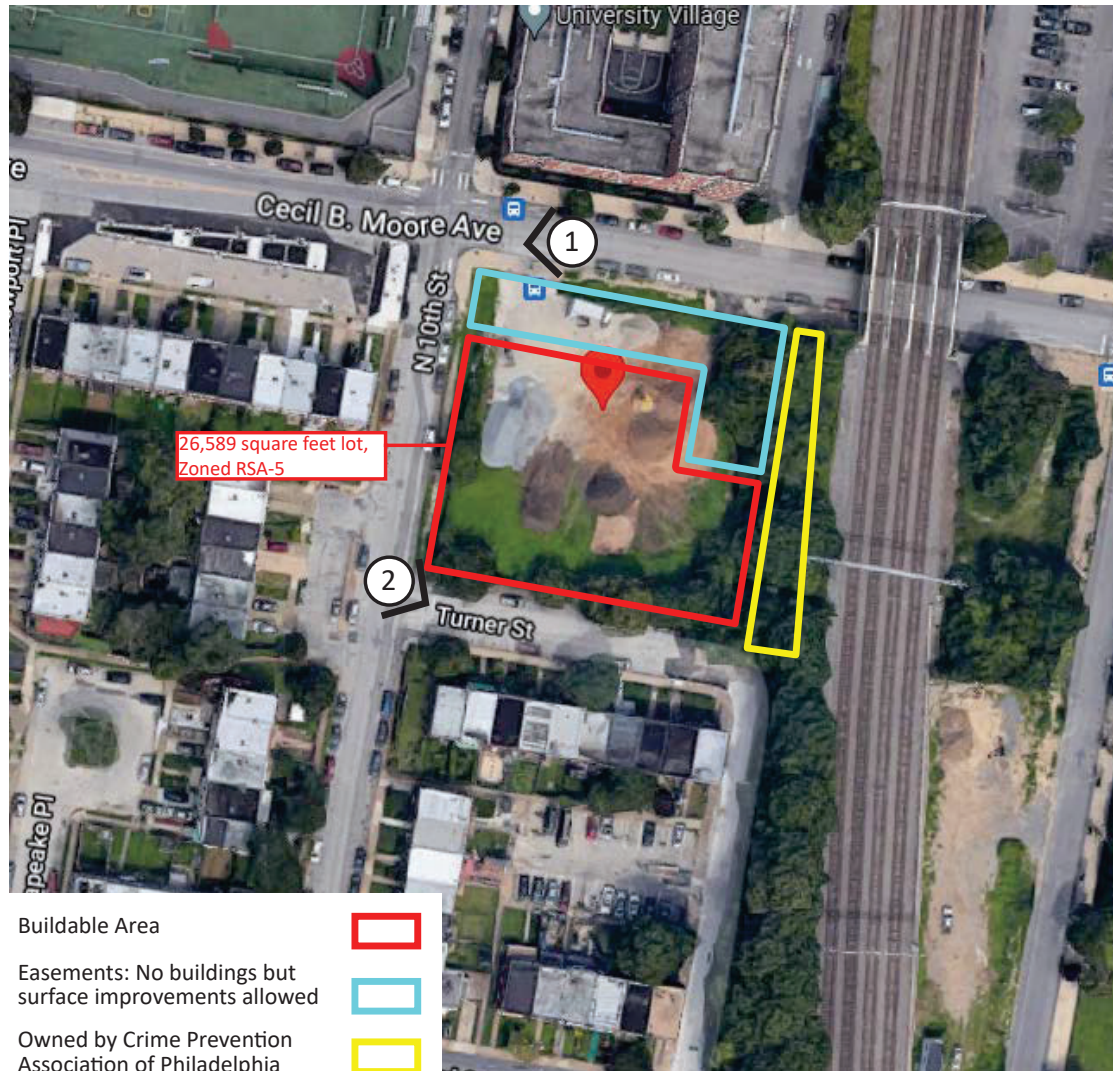
REDEVELOPMENT AUTHORITY of the CITY OF PHILADELPHIA

MODEL CITIES URA - DISPOPOSITION PARCEL

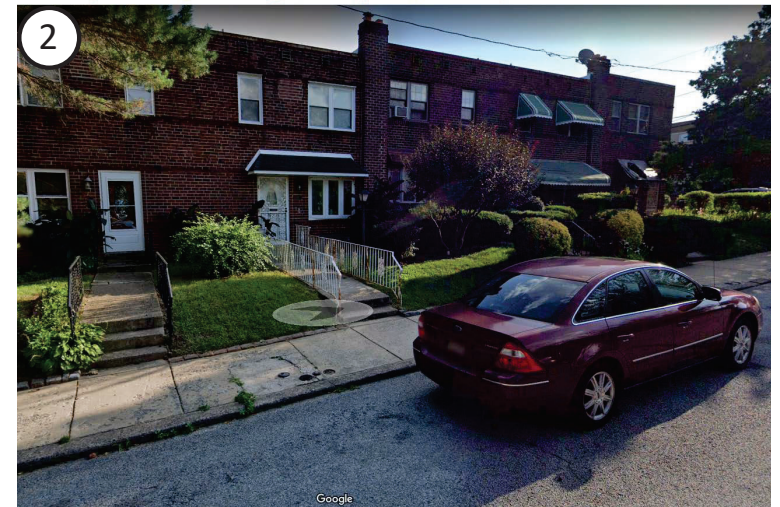
Scale: 1" = 50'

# CD5 PROPERTIES -- 1625-41 N 10TH STREET

PHILADELPHIA CITY PLANNING COMMISSION  
DIVISION OF ART AND DESIGN



View of parking court on Cecil B Moore, which is within current easements



View of rowhomes on Turner Street