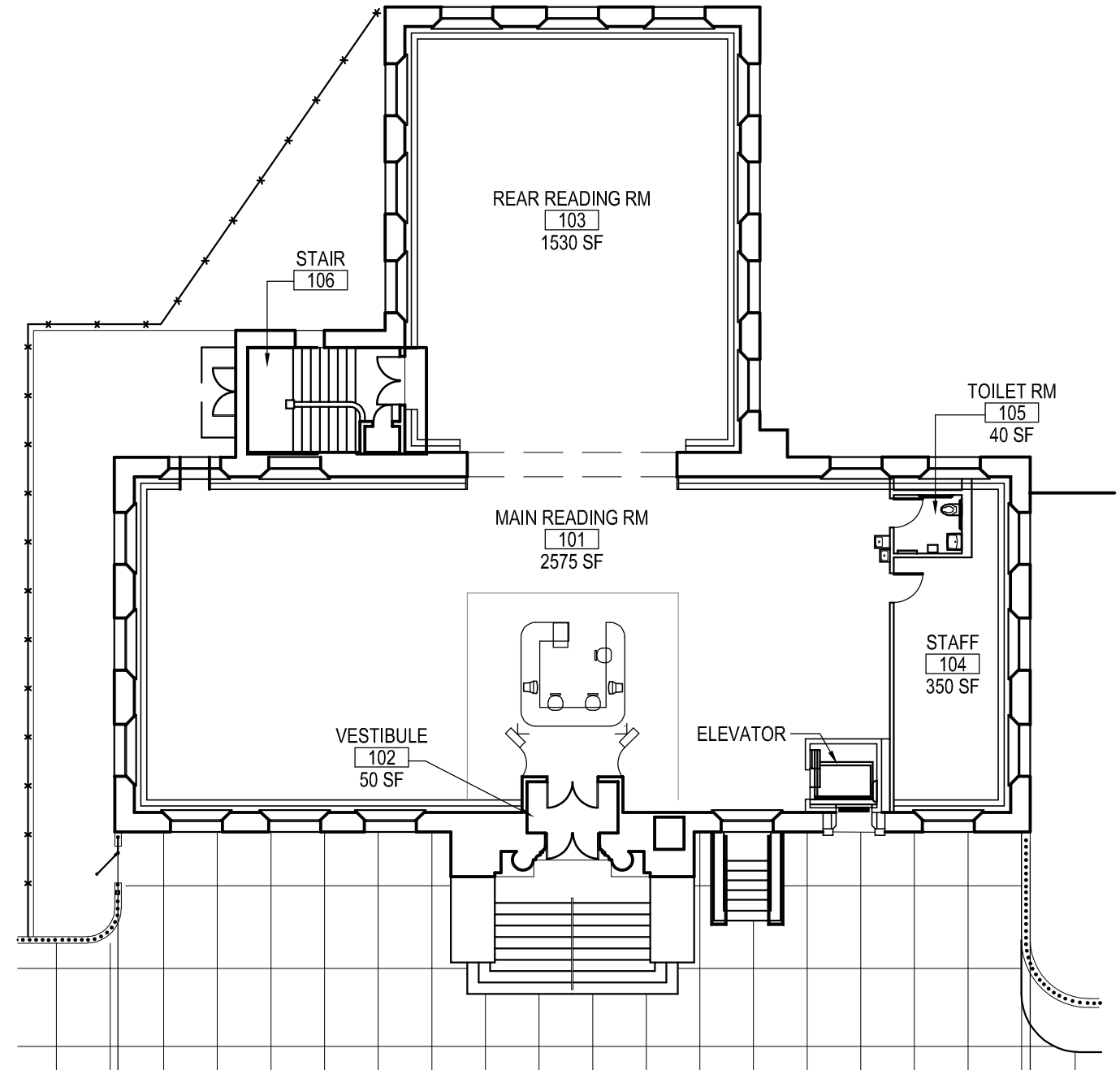
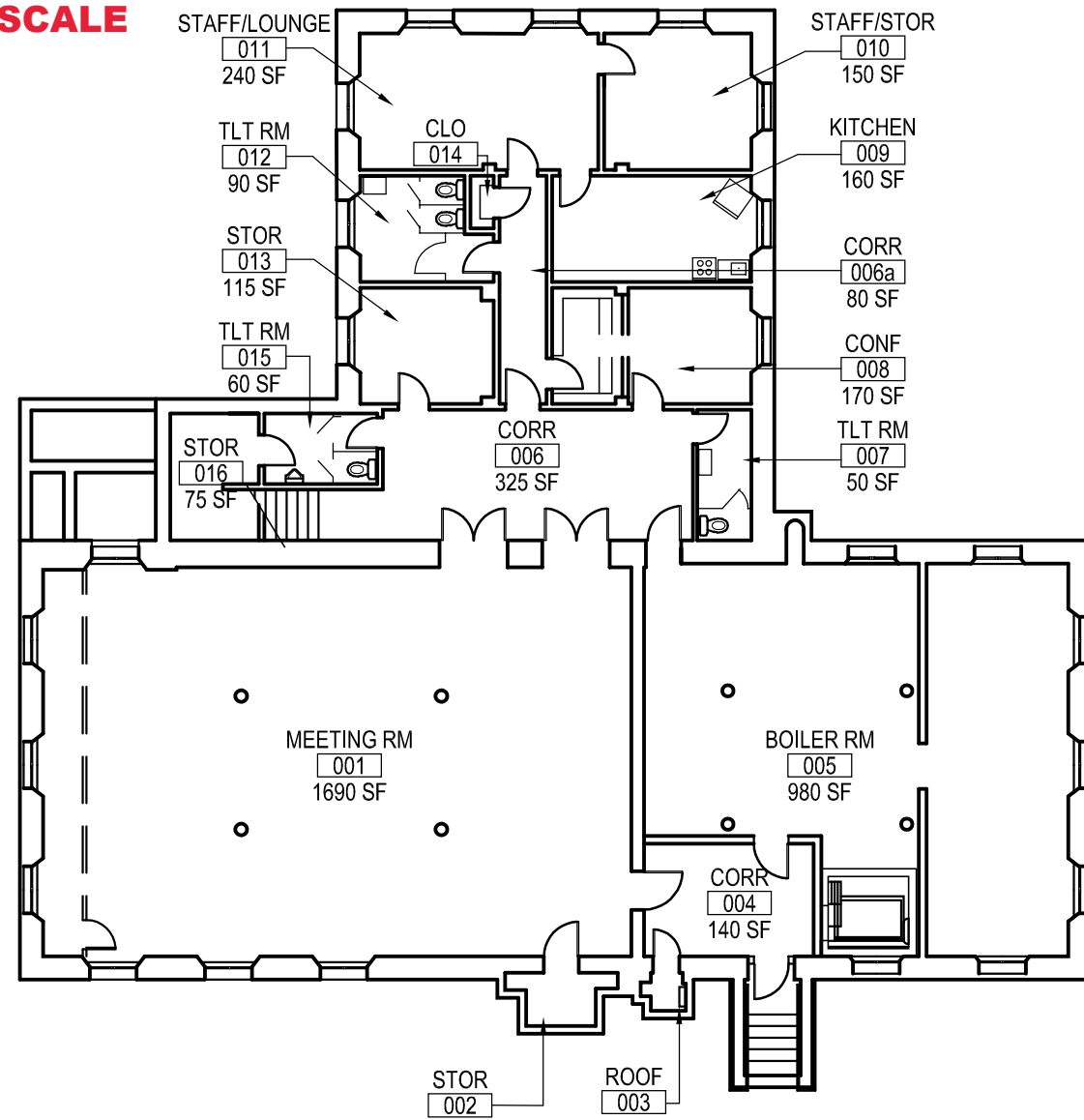
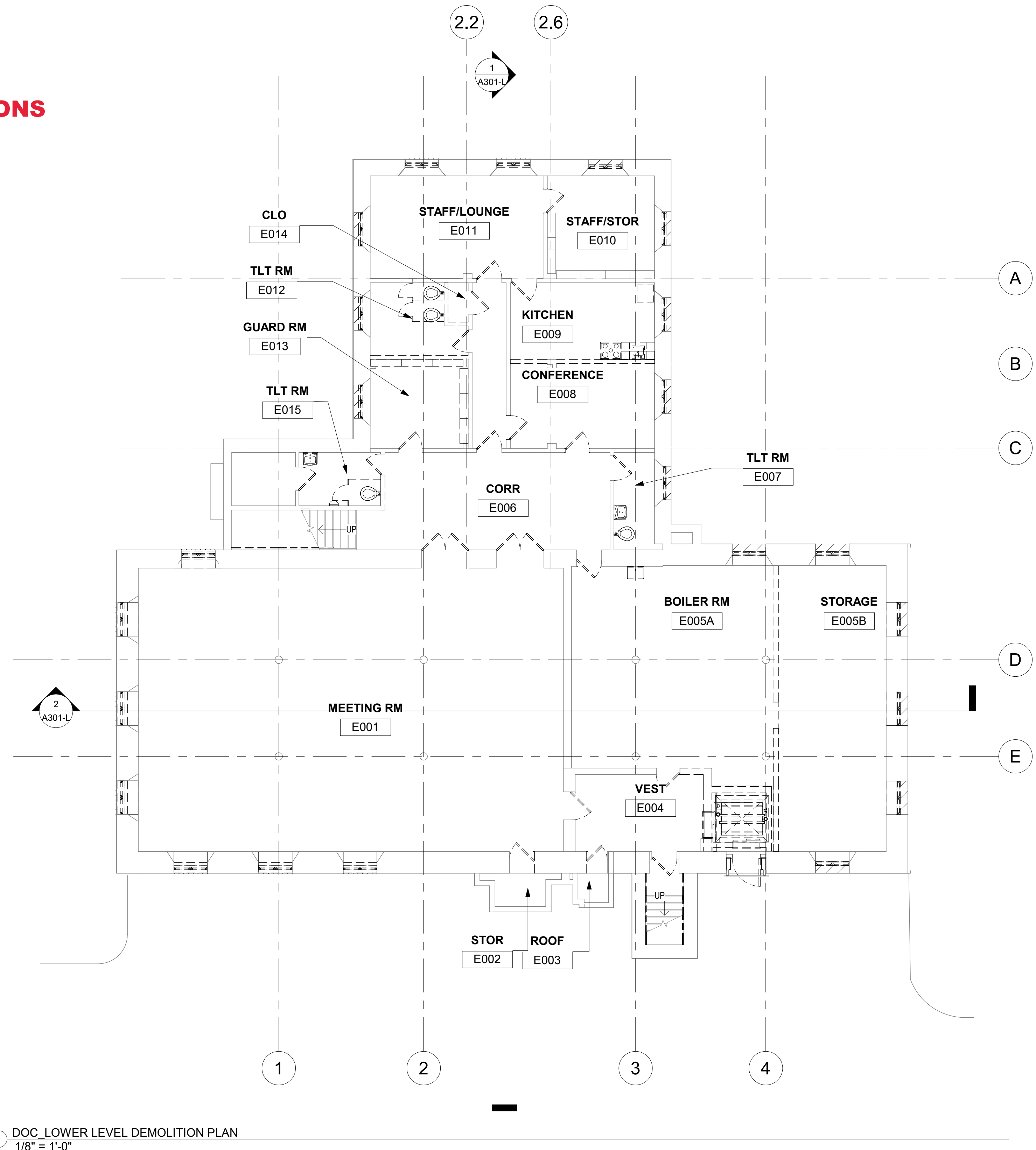


KINGSESSING LIBRARY
12,480 TOTAL SF (TWO FLOORS)
LOWER LEVEL AND FIRST FLOOR EXISTING CONDITIONS
NOT TO SCALE



KINGSESSING LIBRARY
12,480 TOTAL SF (TWO FLOORS)
LOWER LEVEL (BASEMENT) EXISTING CONDITIONS
NOT TO SCALE



1 - DOC. LOWER LEVEL DEMOLITION PLAN
 1/8" = 1'-0"

- GENERAL DEMOLITION NOTES:
1. REMOVE INTERIOR WALLS AND DOORS (SHOWN DASHED) WITHIN AREAS OF GENERAL DEMOLITION. TAKE ALL PRECAUTIONS NECESSARY TO PREVENT AND AVOID DAMAGE TO STRUCTURE AND FINISHES TO REMAIN.
 2. REMOVE FLOOR FINISHES IN AREAS OF GENERAL DEMOLITION UNLESS OTHERWISE NOTED. PATCH AND CLEAN SUBSTRATES AS NECESSARY TO RECEIVE NEW FINISHES. PATCH AND REPAIR ANY DAMAGED FLOOR OR IRREGULARITIES INCLUDING DEPRESSIONS AND CRACKS TO PREPARE FOR NEW FINISHES.
 3. SEE STRUCTURAL DRAWINGS FOR DEMOLITION OF ANY STRUCTURAL ITEMS OR SYSTEMS.
 4. SEE MECHANICAL, PLUMBING AND ELECTRICAL DRAWINGS FOR DEMOLITION OF HVAC, PLUMBING AND ELECTRICAL SYSTEMS.
 5. PATCH AND REPAIR FLOORS, WALLS, AND CEILING SURFACES TO REMAIN, AS AFFECTED BY DEMOLITION.
 6. REMOVE ALL ACOUSTICAL TILE CEILINGS, GRID HANGERS AND SUPPORTING MEMBERS IN AREAS OF GENERAL DEMOLITION.
 7. CHEMICALLY REMOVE EXISTING FLOOR SEALERS ON ALL EXPOSED CONCRETE SLABS IN AREAS OF GENERAL DEMOLITION. PREPARE FLOOR FOR NEW SEALER, OR FLOOR FINISH.
 8. ALL MATERIALS AND EQUIPMENT NOTED TO BE SALVAGED SHALL BE REMOVED AND STORED ON-SITE IN LOCATION DESIGNATED BY OWNER.

- SCOPE OF WORK - LOWER LEVEL
1. SEE DRAWINGS AD201-L AND AD202-L ELEVATIONS FOR EXTERIOR WORK.
 2. DEMOLISH WALLS AND DOORS AS SHOWN.
 3. DEMOLISH ELEVATOR, ELEVATOR SHAFT, & EXTERIOR DOOR AND CALL BUTTONS.
 4. DEMOLISH TOILET ROOM FIXTURES, PARTITIONS AND ACCESSORIES.
 5. REMOVE FLOOR FINISHES THROUGHOUT. ALL FINISHES ARE VCT AND VINYL BASE, EXCEPT AT BOILER RM 005A AND STORAGE RM 005B.
 6. REMOVE ALL LIGHTING AND OTHER CEILING AND WALL MOUNTED FIXTURES THROUGHOUT - SEE MEP DWGS.
 7. REMOVE RADIATORS, AND DUCTWORK. SEE MECH DWGS. PATCH WALLS.
 8. REMOVE STAIR RAILINGS.

LEGEND

(E) WINDOW OR DOOR INFILL TO BE REMOVED - SEE ELEVATIONS

REVISIONS

ISSUE	DATE	DESCRIPTION
1	12/22/21	SD ISSUE_Pricing & Review



REVIEWED BY:

PROJECT COORDINATOR:

SEALS:



KELLY MAIELO ARCHITECTS
 1420 Walnut Street, 15th Floor
 Philadelphia, PA 19102
 www.kmarchitects.com

LANDSCAPE ARCHITECT:
 Salt Design Studio
 4100 Main Street Suite 200
 Philadelphia PA 19127
 www.saltdesignstudio.com

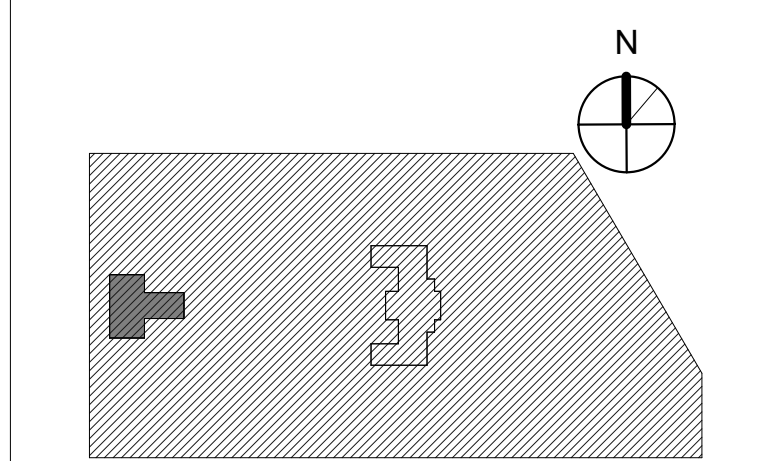
M.E.P./F.P./SITE CIVIL ENGINEERS:
 Pennoni Associates
 1900 Market Street Suite 300
 Philadelphia PA 19103
 www.pennoni.com

LEED CONSULTANT:
 Verde Architecture Consulting
 1635 Market Street Suite 1600
 Philadelphia PA 19103

CITY OF PHILADELPHIA
 DEPARTMENT OF PUBLIC PROPERTY
 1515 ARCH STREET
 11TH FLOOR, ONE PARKWAY BUILDING
 PHILADELPHIA PENNSYLVANIA

PROJECT TITLE
KINGSESSING LIBRARY BUILDING

KEY PLAN



DRAWING TITLE
DEMOLITION PLAN - LOWER LEVEL

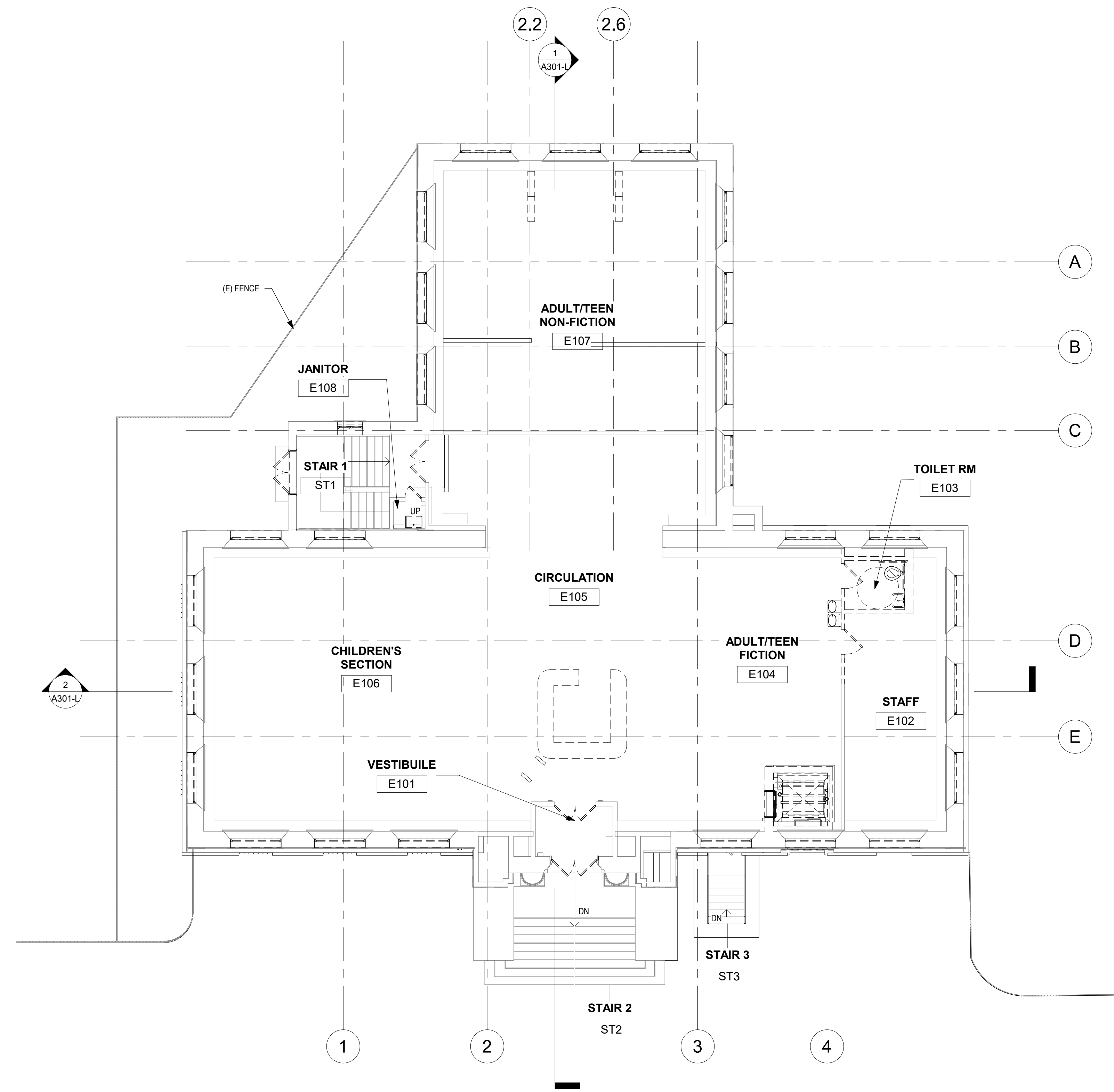
PROJECT NO. 21070	DRAWING NO. AD101-L
DATE 12/22/21	
SCALE As Indicated	
DRAWN BY: Author	
CHECKED BY: Checker	

NOTE: ALL DIMENSIONS AND CONDITIONS SHALL BE VERIFIED BY THE CONTRACTOR AT THE SITE BEFORE PROCEEDING WITH THE WORK.

STAMP AREA

SCHEMATIC DESIGN
 NOT FOR CONSTRUCTION
 12.22.2021

KINGSESSING LIBRARY
12,480 TOTAL SF (TWO FLOORS)
FIRST FLOOR (MAIN LEVEL) EXISTING CONDITIONS
NOT TO SCALE



1 DOC_FIRST FLOOR DEMOLITION PLAN
 1/8" = 1'-0"

GENERAL DEMOLITION NOTES:

1. REMOVE INTERIOR WALLS AND DOORS (SHOWN DASHED) WITHIN AREAS OF GENERAL DEMOLITION. TAKE ALL PRECAUTIONS NECESSARY TO PREVENT AND AVOID DAMAGE TO STRUCTURE AND FINISHES TO REMAIN.
2. REMOVE FLOOR FINISHES IN AREAS OF GENERAL DEMOLITION UNLESS OTHERWISE NOTED. PATCH AND CLEAN SUBSTRATES AS NECESSARY TO RECEIVE NEW FINISHES. PATCH AND REPAIR ANY DAMAGED FLOOR OR IRREGULARITIES INCLUDING DEPRESSIONS AND CRACKS TO PREPARE FOR NEW FINISHES.
3. SEE STRUCTURAL DRAWINGS FOR DEMOLITION OF ANY STRUCTURAL ITEMS OR SYSTEMS.
4. SEE MECHANICAL, PLUMBING AND ELECTRICAL DRAWINGS FOR DEMOLITION OF HVAC, PLUMBING AND ELECTRICAL SYSTEMS.
5. PATCH AND REPAIR FLOORS, WALLS, AND CEILING SURFACES TO REMAIN, AS AFFECTED BY DEMOLITION.
6. REMOVE ALL ACOUSTICAL TILE CEILINGS, GRID HANGERS AND SUPPORTING MEMBERS IN AREAS OF GENERAL DEMOLITION.
7. CHEMICALLY REMOVE EXISTING FLOOR SEALER ON ALL EXPOSED CONCRETE SLABS IN AREAS OF GENERAL DEMOLITION. PREPARE FLOOR FOR NEW SEALER, OR FLOOR FINISH.
8. ALL MATERIALS AND EQUIPMENT NOTED TO BE SALVAGED SHALL BE REMOVED AND STORED ON-SITE IN LOCATION DESIGNATED BY OWNER.

SCOPE OF WORK - 1ST FLOOR LEVEL

1. SEE DRAWINGS AD201-L AND AD202-L ELEVATIONS FOR EXTERIOR WORK.
2. DEMOLISH WALLS AND DOORS AS SHOWN.
3. DEMOLISH ELEVATOR, ELEVATOR SHAFT, & EXTERIOR DOOR AND CALL BUTTONS.
4. DEMOLISH TOILET ROOM FIXTURES AND ACCESSORIES.
5. REMOVE FLOOR FINISHES (CARPET) THROUGHOUT.
6. REMOVE TILE FLOOR AND AT WALLS AT TOILET ROOM.
7. REMOVE ALL LIGHTING AND OTHER CEILING AND WALLS MOUNTED FIXTURES THROUGHOUT - SEE MEP DWGS.
8. REMOVE RADIATORS, AND DUCTWORK. SEE MECH DWGS. PATCH WALLS.
9. REMOVE STAIR RAILINGS.
10. REMOVE CIRCULATION DESK.
11. REMOVE SECURITY PYLONS.

REVISIONS

ISSUE	DATE	DESCRIPTION
1	12/22/21	SD ISSUE_Pricing & Review



REVIEWED BY:

PROJECT COORDINATOR:

SEALS:



KELLY MAIELLO ARCHITECTS
 1420 Walnut Street, 15th Floor
 Philadelphia, PA 19102
 www.kmarchitects.com

LANDSCAPE ARCHITECT:
 Salt Design Studio
 4100 Main Street Suite 200
 Philadelphia PA 19127
 www.saltdesignstudio.com

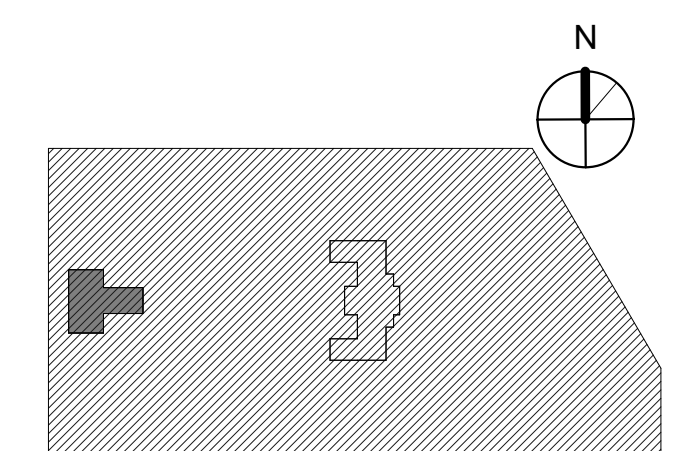
M.E.P./F.P./SITE CIVIL ENGINEERS:
 Pennoni Associates
 1900 Market Street Suite 300
 Philadelphia PA 19103
 www.pennoni.com

LEED CONSULTANT:
 Verde Architecture Consulting
 1635 Market Street Suite 1600
 Philadelphia PA 19103

CITY OF PHILADELPHIA
 DEPARTMENT OF PUBLIC PROPERTY
 1515 ARCH STREET
 11TH FLOOR, ONE PARKWAY BUILDING
 PHILADELPHIA PENNSYLVANIA

PROJECT TITLE
KINGSESSING LIBRARY BUILDING

KEY PLAN

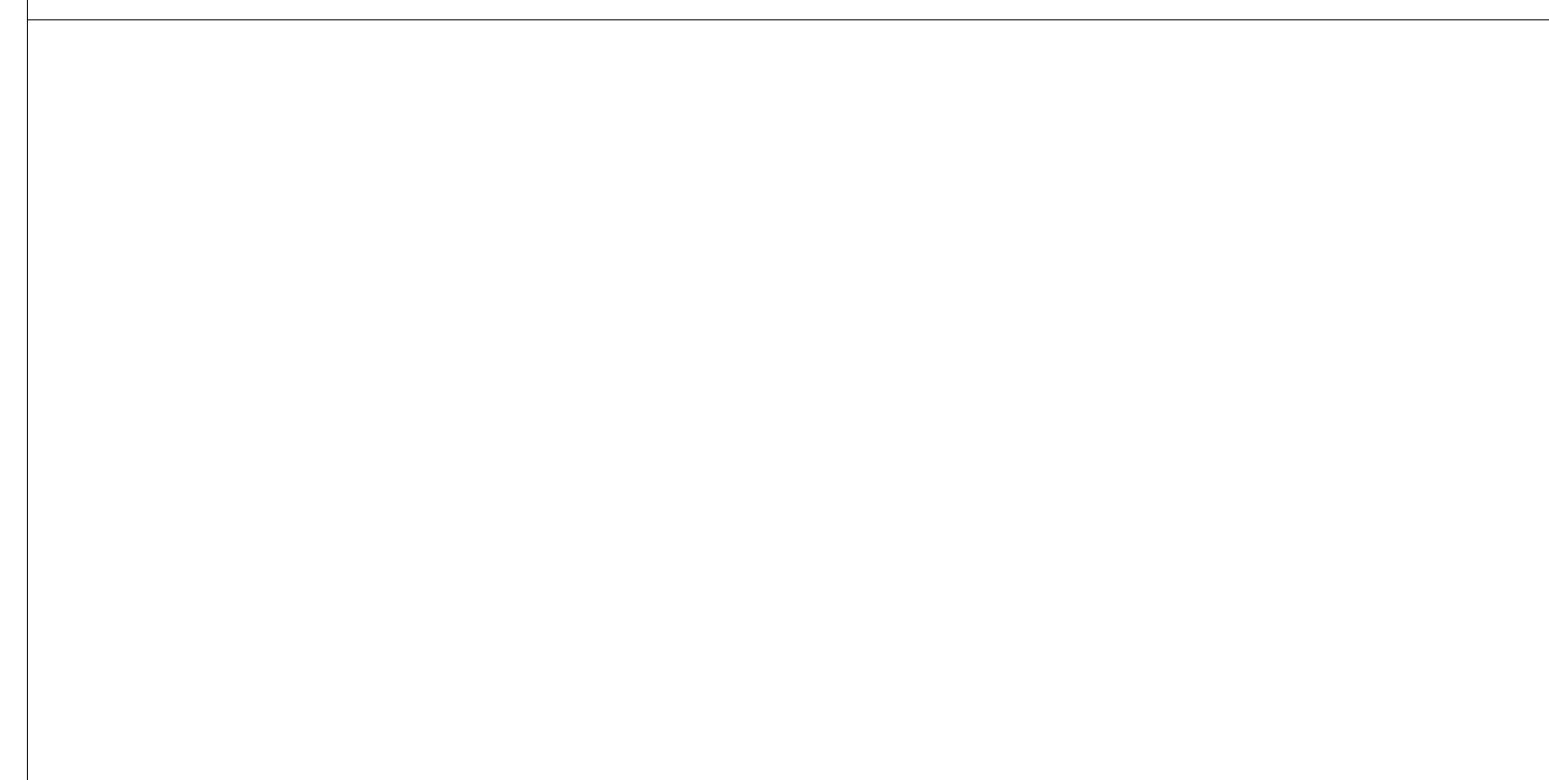


DRAWING TITLE
DEMOLITION PLAN - FIRST FLOOR

PROJECT NO. 21070	DRAWING NO. AD102-L
DATE 12/22/21	
SCALE As Indicated	
DRAWN BY: Author	
CHECKED BY: Checker	
NOTE: ALL DIMENSIONS AND CONDITIONS SHALL BE VERIFIED BY THE CONTRACTOR AT THE SITE BEFORE PROCEEDING WITH THE WORK.	

SCHEMATIC DESIGN
 NOT FOR CONSTRUCTION
 12.22.2021

STAMP AREA



LIBRARY
EXISTING INTERIOR CONDITIONS

KINGSESSING LIBRARY
12,480 TOTAL SF (TWO FLOORS)
LOWER LEVEL AND FIRST FLOOR EXISTING CONDITIONS

