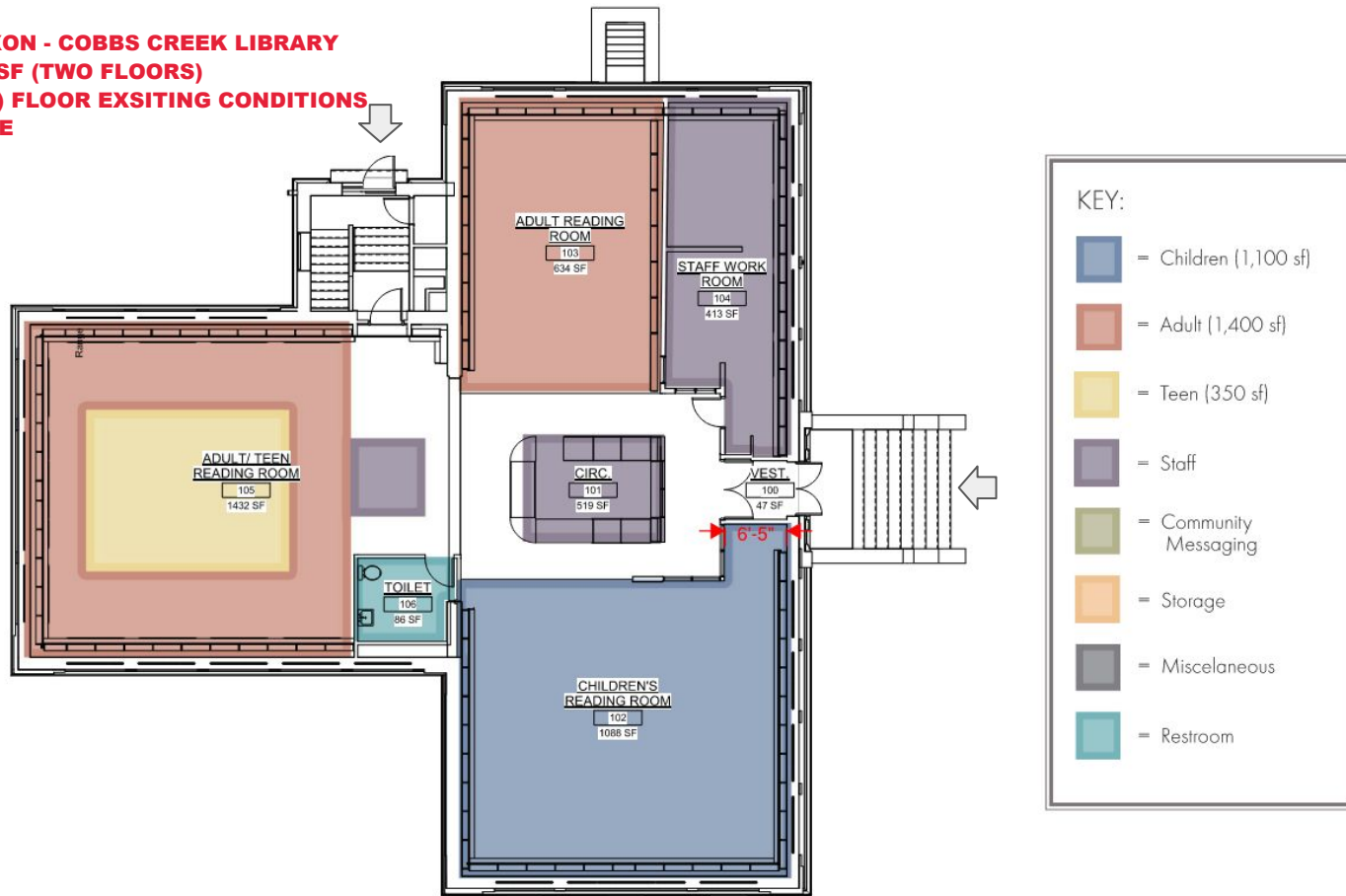
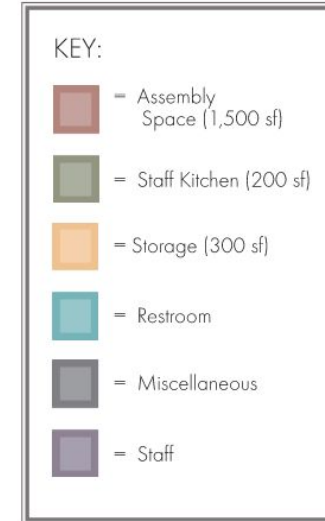
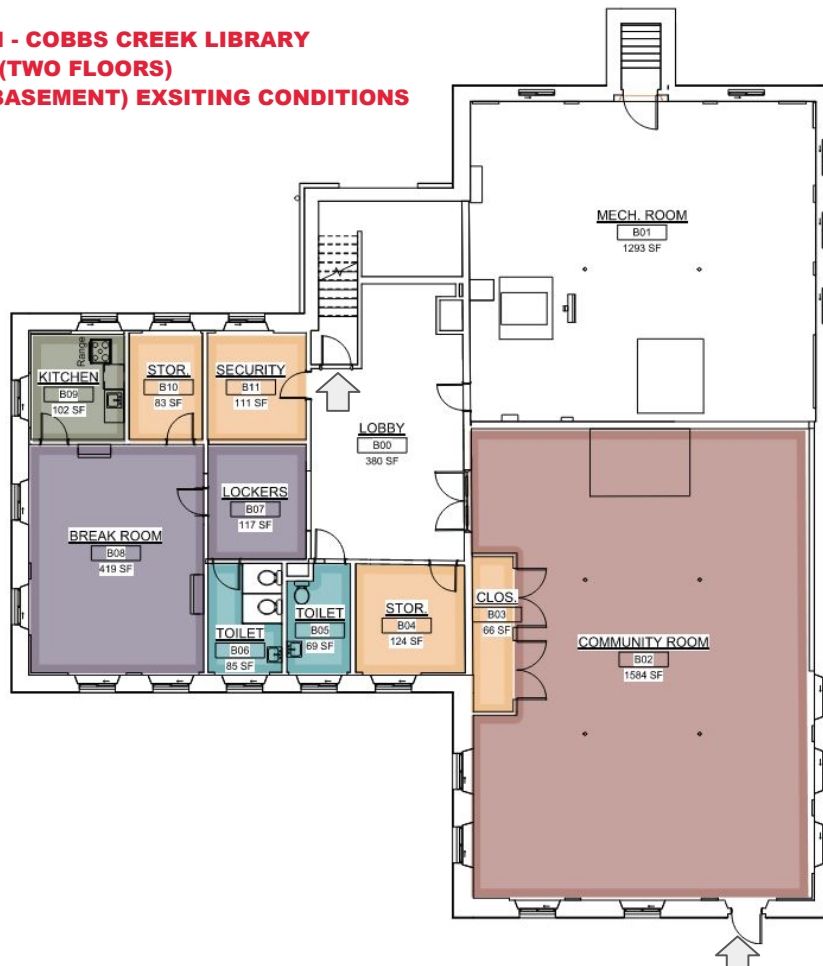


BLANCHE NIXON - COBBS CREEK LIBRARY
9,600 TOTAL SF (TWO FLOORS)
UPPER (MAIN) FLOOR EXSITING CONDITIONS
NOT TO SCALE



BLANCHE NIXON - COBBS CREEK LIBRARY
9,600 TOTAL SF (TWO FLOORS)
LOWER LEVEL (BASEMENT) EXISTING CONDITIONS
NOT TO SCALE



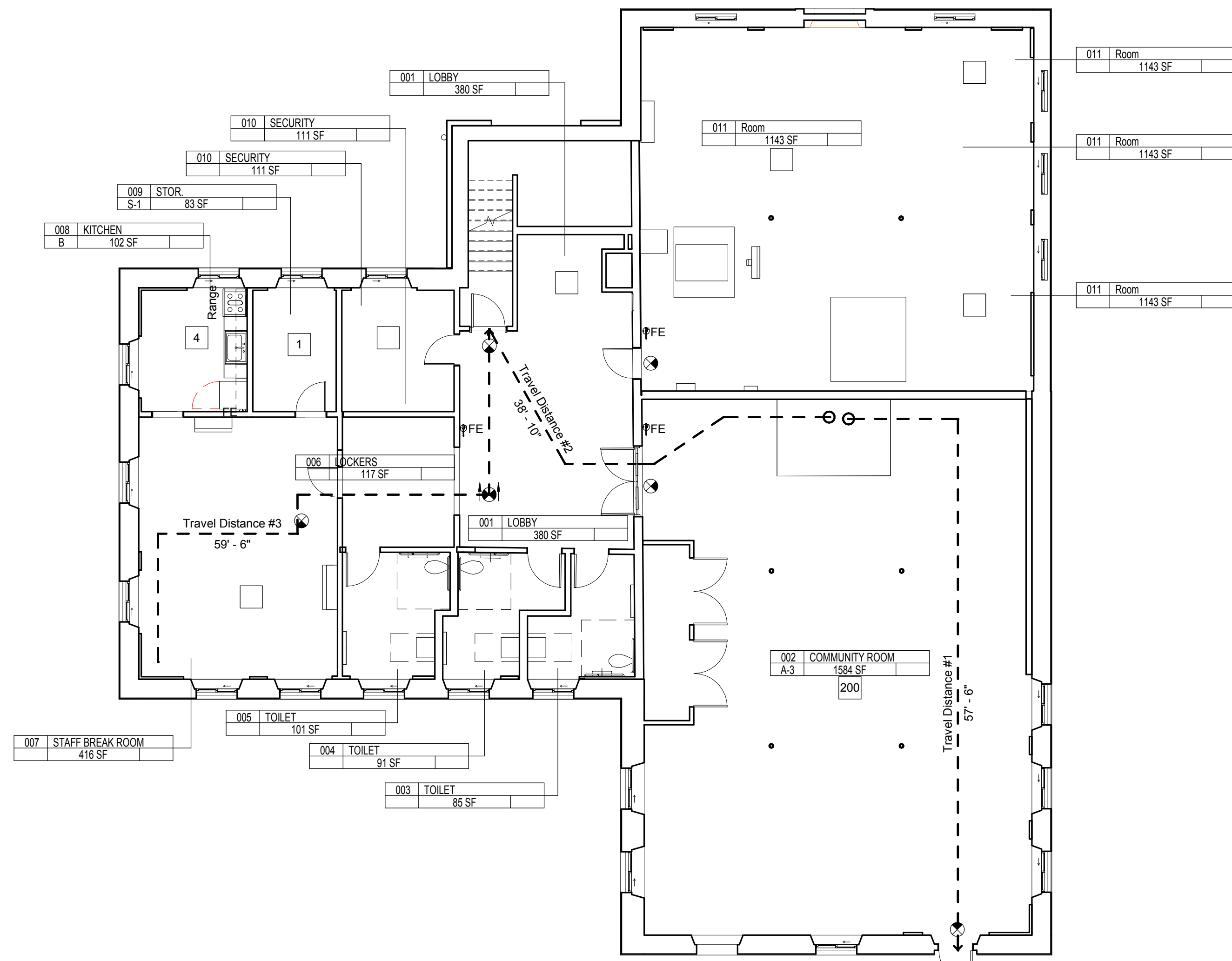
_Floor Occupancy Calculation - ADD ALTS									
Number	Name	Occ.	Area	SF / Occ	Calculated Occ.	Overri de	Designed Occ.	Max Occ.	Comments
EX - LOWER LEVEL									
001	LOBBY		380 SF						
002	COMMUNITY ROOM	A-3	1584 SF	7 SF	226	Yes	200	200	
003	TOILET		85 SF						
004	TOILET		91 SF						
005	TOILET		101 SF						
006	LOCKERS		117 SF						
007	STAFF BREAK ROOM		416 SF						
008	KITCHEN		102 SF	50 SF	2	Yes	4	4	
009	STOR.	S-1	83 SF	300 SF	0	Yes	1	1	
010	SECURITY		111 SF						
011	Room		1143 SF						
EX - LOWER LEVEL							205	205	
EX - 1ST FLOOR									
100	VEST.		47 SF						
101	CIRC.	B	143 SF	50 SF	3	Yes	3	3	
102	STAFF WORK ROOM	B	442 SF	100 SF	4	Yes	4	4	
103	ADULT AREA	A-3	515 SF	50 SF	10	Yes	10	10	
103S	ADULT STACKS	A-3	117 SF	100 SF	1	Yes	1	1	
104	ADULT AREA	A-3	367 SF	50 SF	7	Yes	7	7	
104S	ADULT STACKS	A-3	320 SF	100 SF	3	Yes	3	3	
105	TEEN AREA	A-3	274 SF	50 SF	5	Yes	5	5	
105S	TEEN STACKS	A-3	98 SF	100 SF	1	Yes	1	1	
106	ADULT/ TEEN LIBRARIAN	B	131 SF	100 SF	1	Yes	1	1	
107	TOILET		86 SF						
108	CHILDREN'S AREA	A-3	806 SF	50 SF	16	Yes	16	16	
108S	CHILDREN'S STACKS	A-3	289 SF	100 SF	3	Yes	3	3	
EX - 1ST FLOOR							54	54	
							259	259	

BLANCHE NIXON - COBBS CREEK LIBRARY
9,600 TOTAL SF (TWO FLOORS)
PROPOSED CONDITIONS, LOWER LEVEL AND FIRST FLOOR
NOT TO SCALE

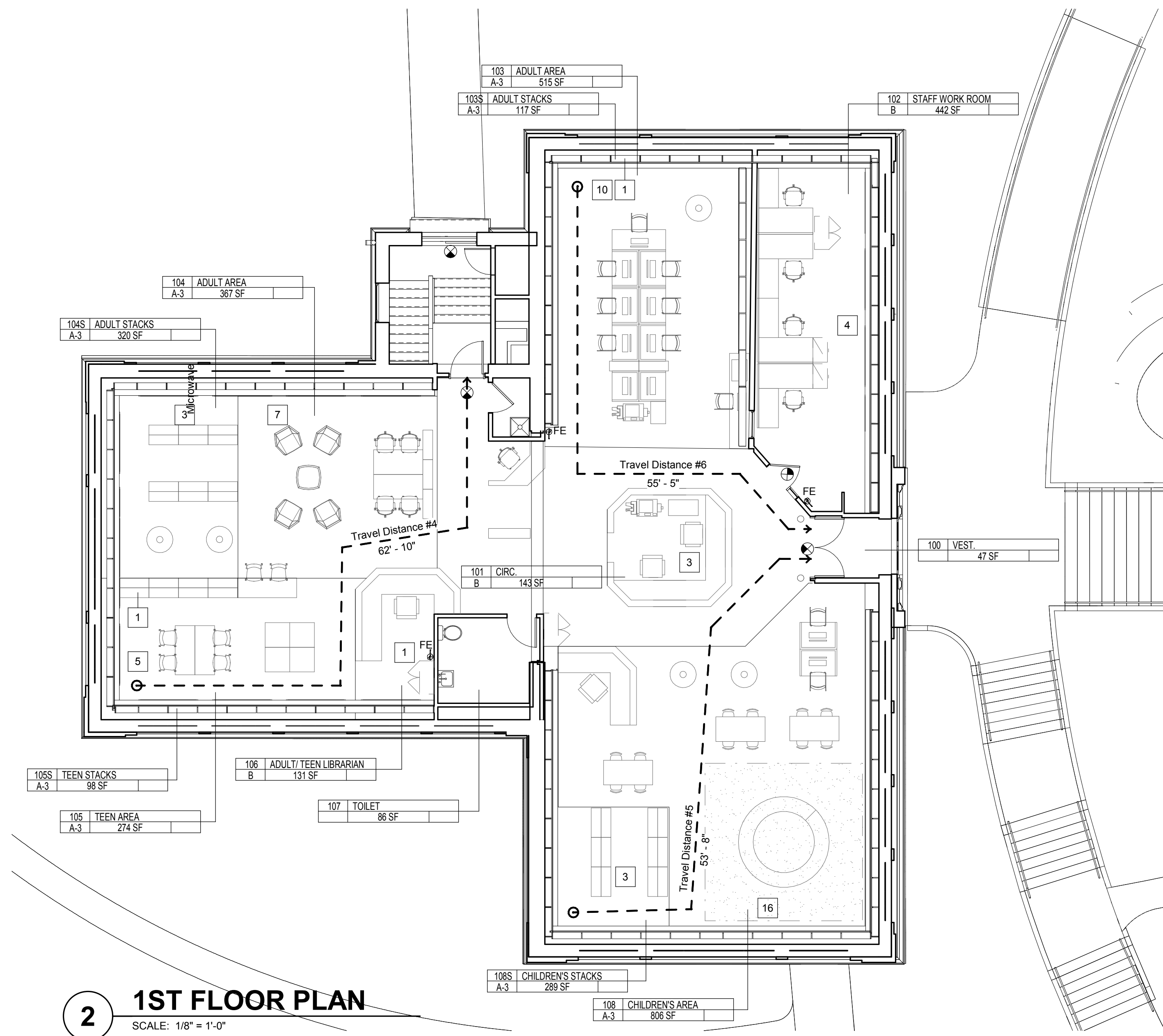
_Egress Paths - Master			
Travel Distance #	Maximum Travel Distance (feet)	Length	Meets Code
5' - 4"			
EX - LOWER LEVEL			
1	250' - 0"	57' - 6"	Yes
2	250' - 0"	38' - 10"	Yes
3	250' - 0"	59' - 6"	Yes
EX - 1ST FLOOR			
4	250' - 0"	62' - 10"	Yes
5	250' - 0"	53' - 8"	Yes
6	250' - 0"	55' - 5"	Yes

EGRESS LEGEND

- TRAVEL DIST. #
- EGRESS PATH
- EXIT SIGN
- FIRE EXTINGUISHER
- # OF EGRESSING OCCUPANTS
- EMERGENCY LIGHT
- EMERGENCY LIGHT
- EMERGENCY LIGHT
- EMERGENCY LIGHT



1 LOWER LEVEL FLOOR PLAN
 SCALE: 1/8" = 1'-0"



2 1ST FLOOR PLAN
 SCALE: 1/8" = 1'-0"

No.	Date	Description
1	4/14/2022	SD SUBMISSION
		Revisions / Issues

DI Group Architecture
 ARCHITECTURE FOR CHANGE
 15 Bethany Street • New Brunswick, NJ 08901 • T: 732.249.6242
 1417 N. 2nd St., Ste 3M • Philadelphia, PA 19122 • T: 215.634.3400
 Richard D. Alderiso, AIA
 NJ RA AI 15023, NY RA 027416, PA RA 405474

PRELIMINARY
 NOT FOR CONSTRUCTION

DO NOT SCALE. DRAWING MAY BE PRINTED AT REDUCED SCALE. CONSULT WITH ARCHITECT FOR DIMENSIONS.

Client:
COMMUNITY VENTURES
 1501 Cherry Street
 Philadelphia, PA 19102-1403

Project:
FREE LIBRARY OF PHILADELPHIA
BLANCHE A. NIXON/ COBBS CREEK
BRANCH
 5800 COBBS CREEK PARKWAY, PHILADELPHIA, PA 19143-3036

Drawing Information:
 Project No: 21 014
 Date: 03/03/22
 Drawn By: MF
 Checked By: Checker

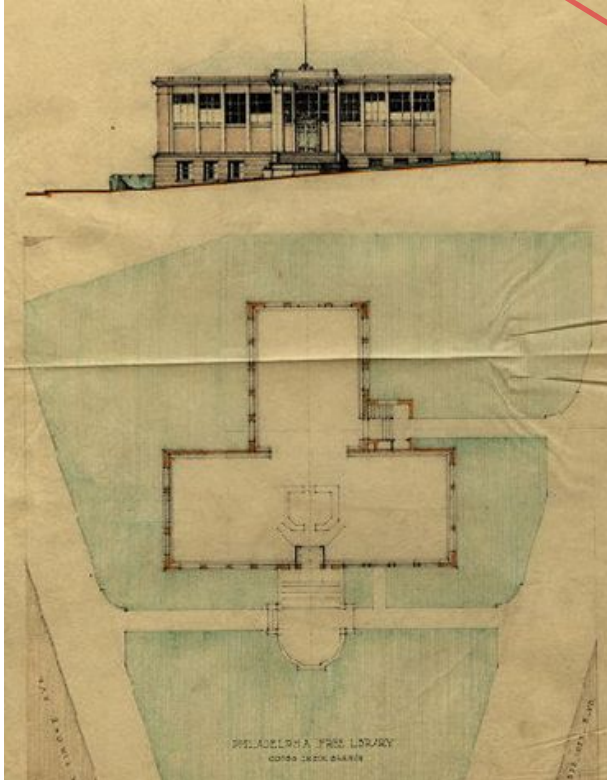
Sheet Name:
EGRESS PLANS

Sheet No:

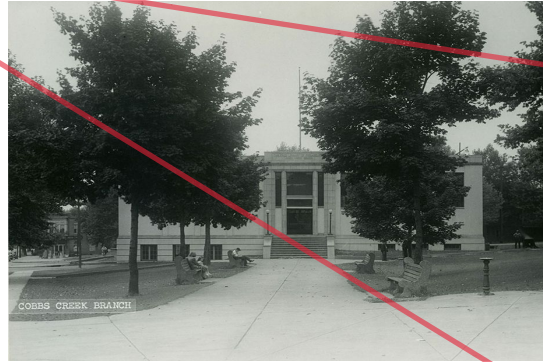
A-011

BLANCHE NIXON - COBBS CREEK LIBRARY
9,600 TOTAL SF (TWO FLOORS)
UPPER (MAIN) FLOOR EXSITING CONDITIONS

Photos existing and historic



Rendered plan & Elevation c. 1925



Front Elevation c. 1940



Reading Room Interior c. 1940



Reading Room Interior



Reading Room Interior

BLANCHE NIXON/COBBS CREEK LIBRARY

ART COMMISSION REVIEW | REBUILD | MAY 2022

BLANCHE NIXON - COBBS CREEK LIBRARY

LOWER LEVEL (BASEMENT) EXSITING CONDITIONS



Community Room



Lower Level Lobby

Interior photos



Mechanical Room



Staff Break Room



Staff Restroom



Staff Kitchen