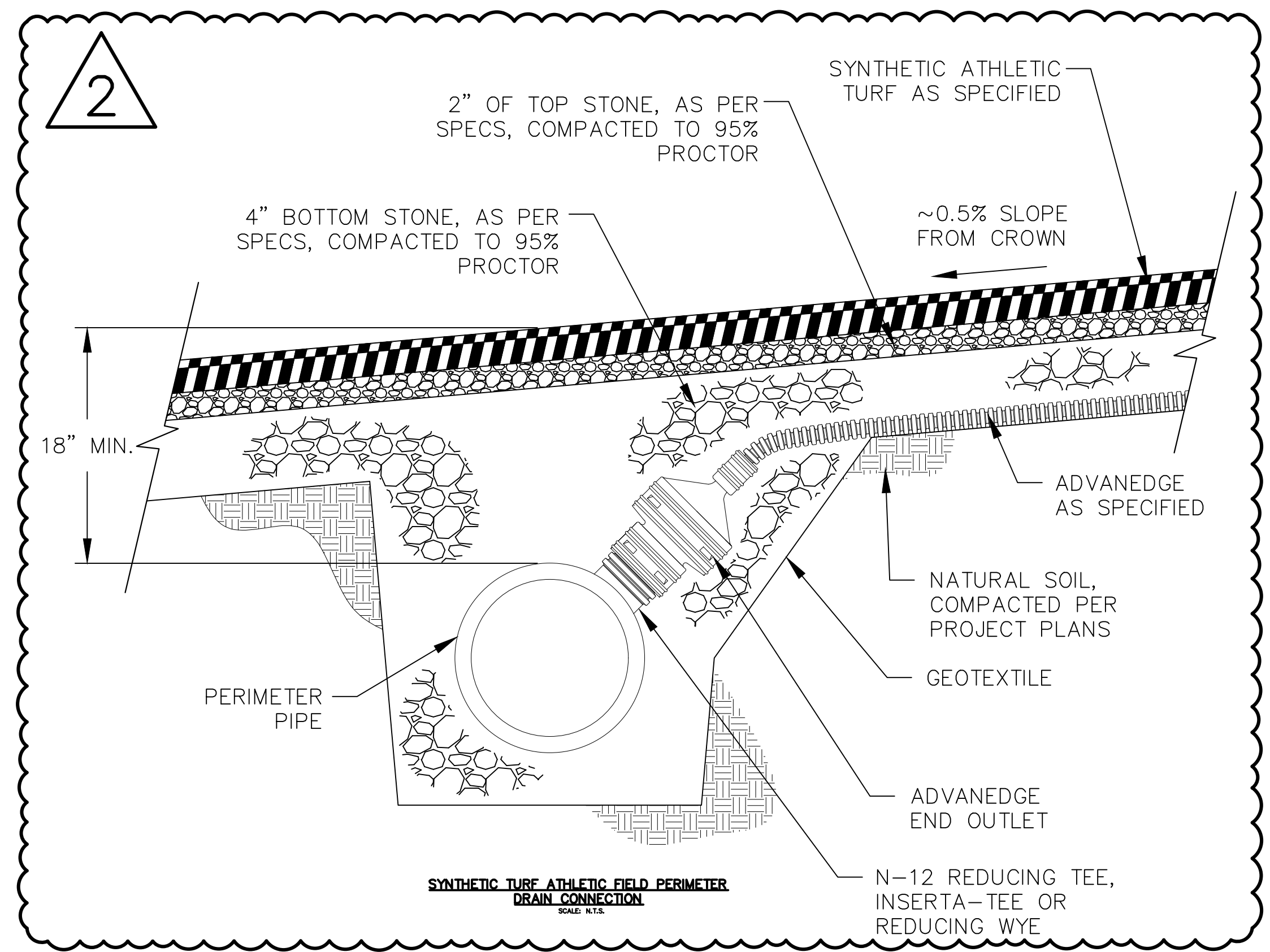
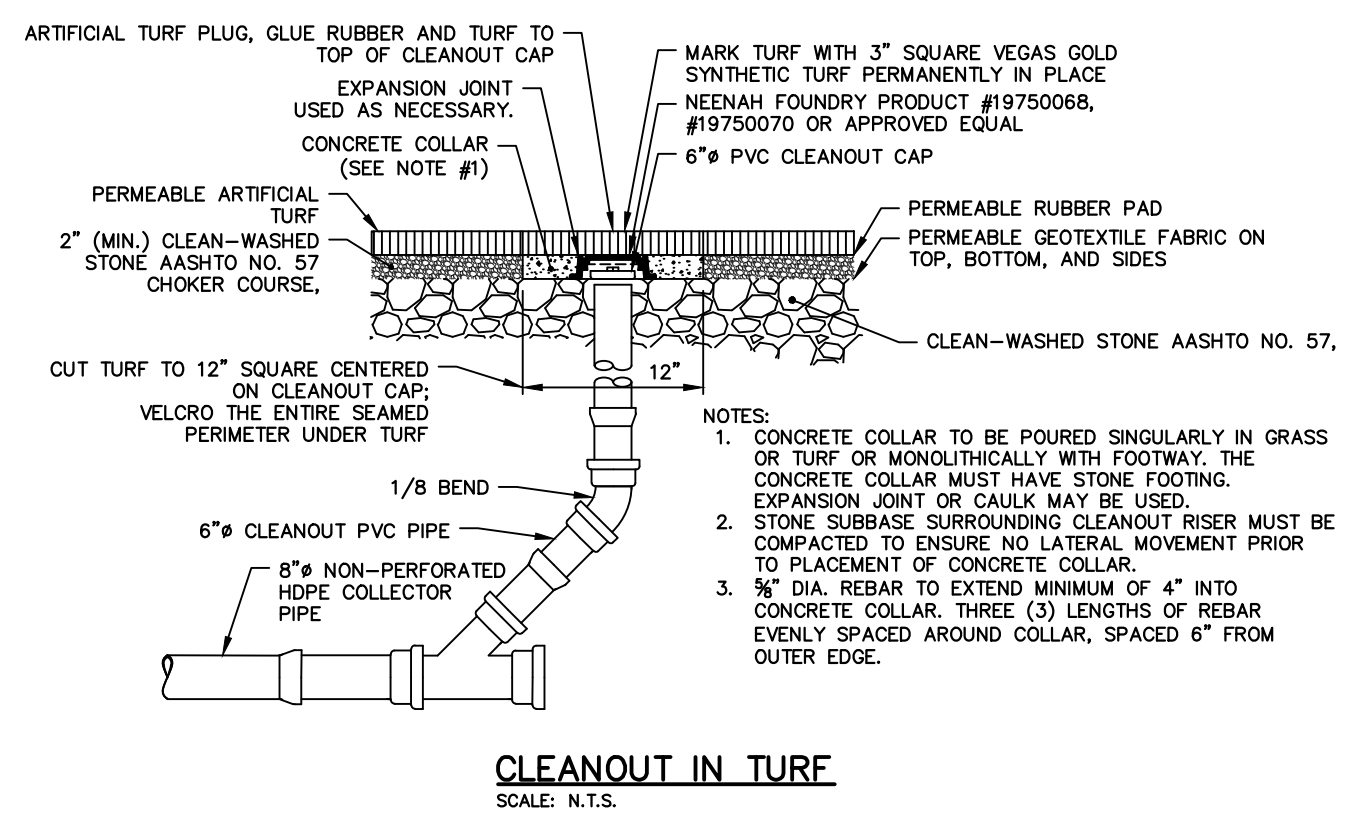
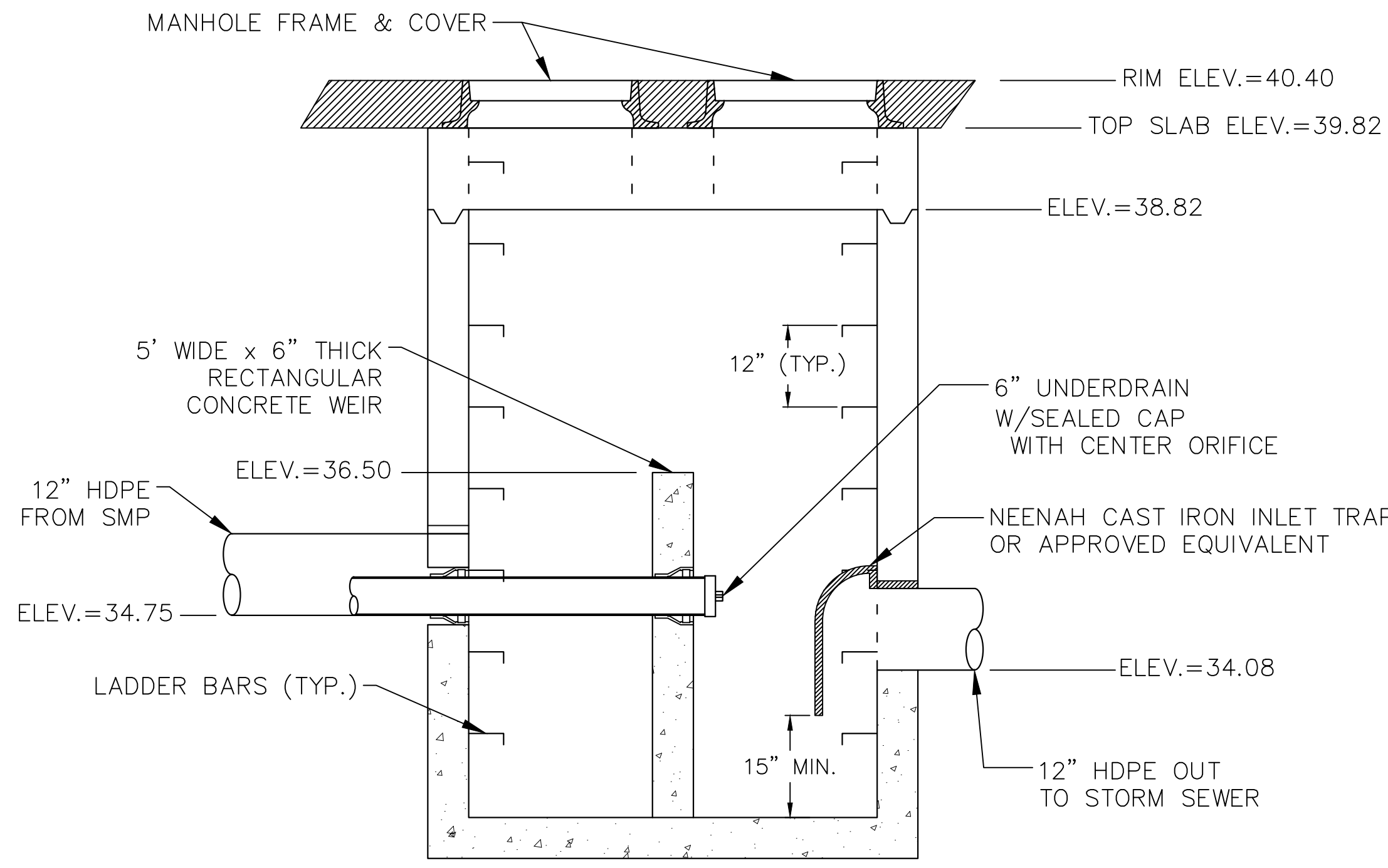
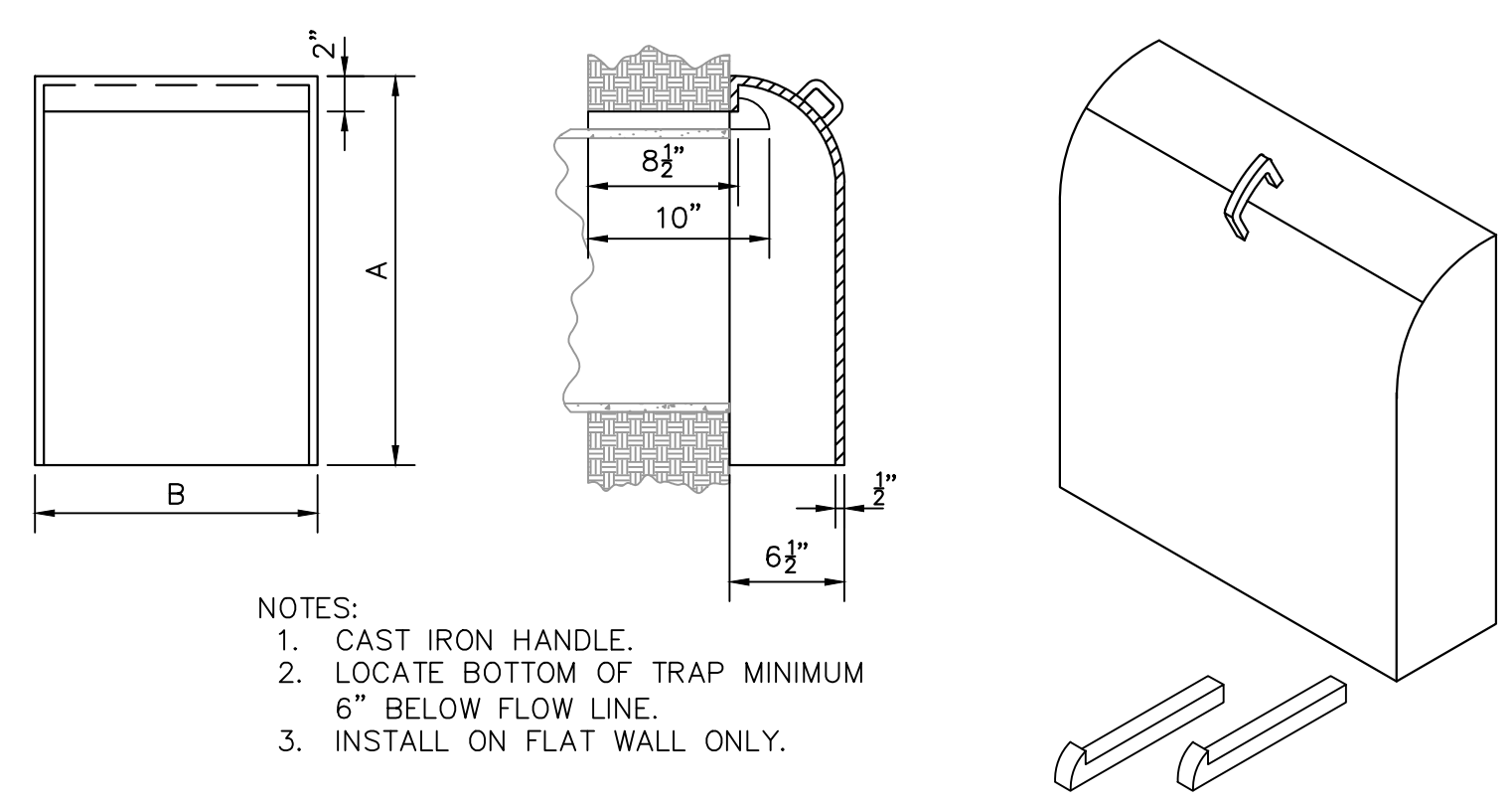


REVISIONS		
ISSUE	DATE	REVISIONS
100% BID	11.07.2025	100% Bid Submission
PCSNP/NPDES	10.13.2025	100% Bid Submission
NPDES	11.20.2025	NPDES Submission 1
△	02.05.2026	Addendum #02



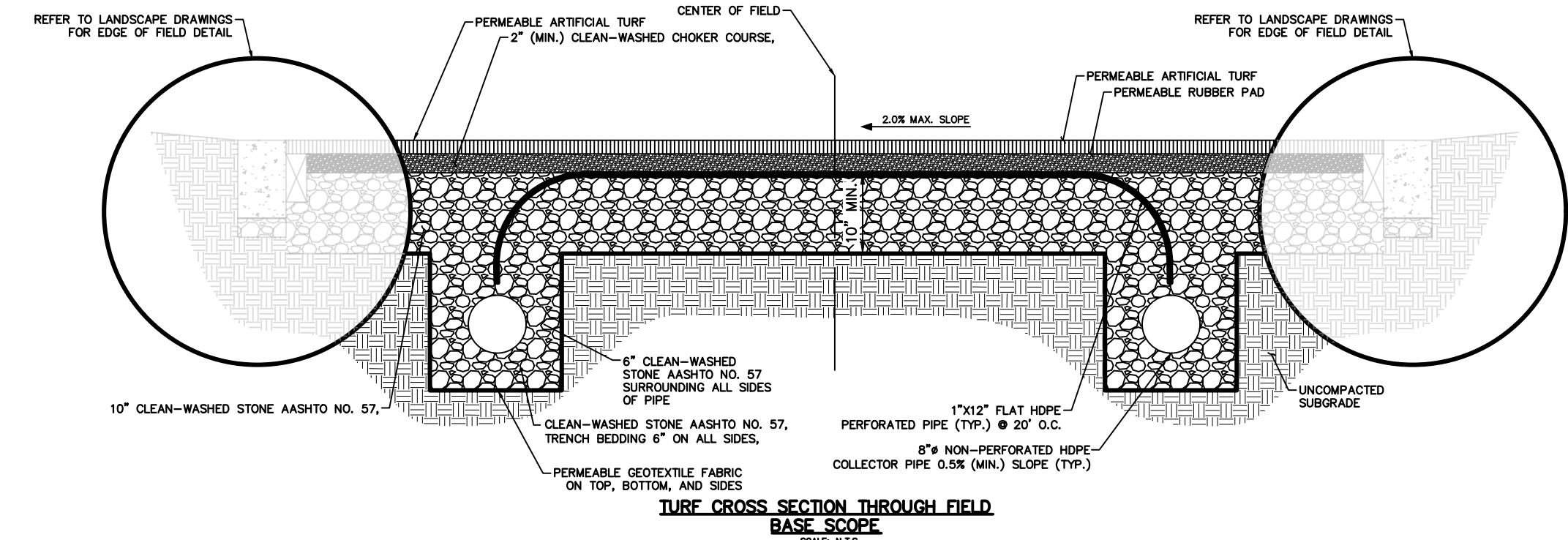
OUTLET CONTROL STRUCTURE (OCS-1)

- NOTES:
- OUTLET CONTROL STRUCTURE TO BE CONSTRUCTED WITH A PENNDOT TYPE 5 INLET BOX IN ACCORDANCE WITH PENNDOT'S STANDARDS FOR ROADWAY CONSTRUCTION PER RC-45M AND RC-46M DETAIL SHEETS.
 - TYPE 5 INLET BOX OUTLET STRUCTURE SHALL FOLLOW PENNDOT STANDARDS FOR ASSEMBLY AND INCLUDE A TOP SLAB WITH TWO OPENINGS FOR ACCESS, MANHOLE FRAMES AND LIDS, AND LADDER BARS,
 - TYPE 5 BOX TO BE MODIFIED WITH A MONOLITHICALLY POURED CONCRETE WEIR IN THE MIDDLE OF THE BOX SPANNING FROM WALL TO WALL (5-FOOT LONG) AND AT THE ELEVATION AS SHOWN. CONCRETE WEIR WALL IS 6" THICK.
 - OUTLET STRUCTURE WILL ACCOMMODATE SMP FLOW UPSTREAM OF THE PROPOSED WEIR AND PROVIDE A WATER TIGHT CAPPED UNDERDRAIN THROUGH THROUGH WEIR WALL FOR FUTURE USE IF REQUIRED.
 - PIPE PENETRATIONS THROUGH OUTER WALLS OR WEIR WILL BE WATER TIGHT IN ACCORDANCE WITH PENNDOT PUB 408 AND PENNDOT'S STANDARDS FOR ROADWAY CONSTRUCTION AND IN COMPLIANCE WITH BULLETIN 15.

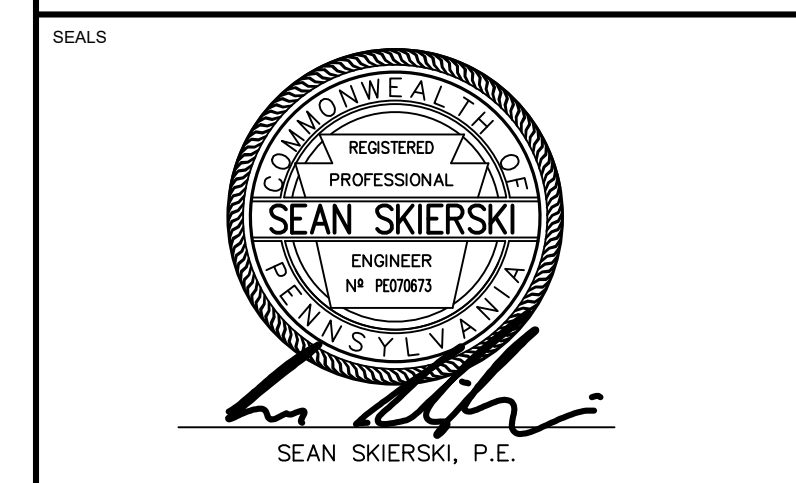


NEENAH R-3701 CATCH BASIN TRAP (OR APPROVED EQUAL)				
CATALOG NO.	A (INCHES)	B (INCHES)	PIPE SIZE (INCHES)	SETTING METHOD
R-3701-12	22	16	12	ON 2 HOOKS

CATCH BASIN TRAP
SCALE: N.T.S.



PROJECT COORDINATOR
1515 Arch Street
Philadelphia, PA 19102



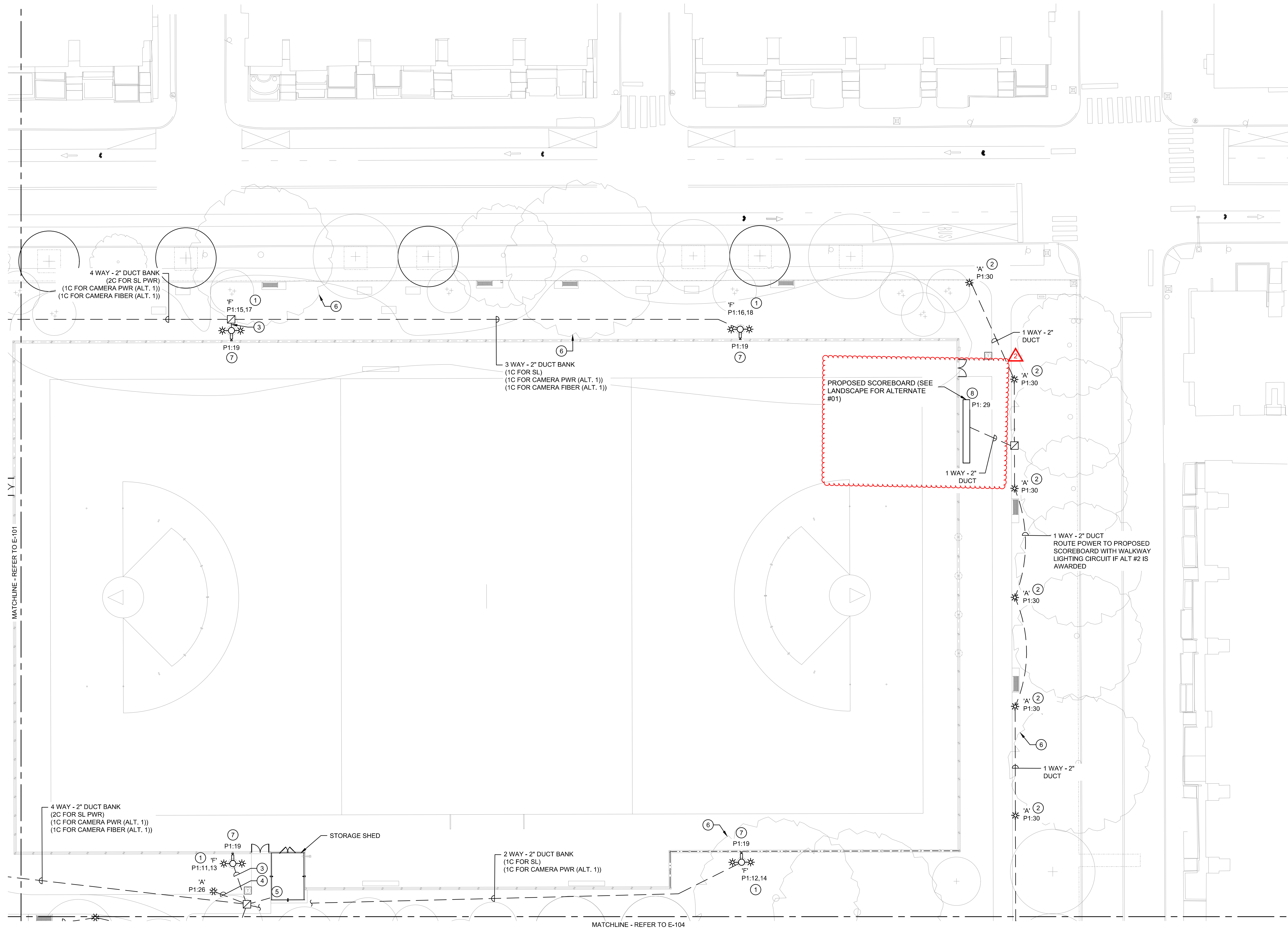
PROJECT TEAM
Landscape Architect:
Ground Reconstrued
415 Spring Garden Street, Suite 403
Philadelphia, PA 19123
215-782-0727 | www.groundreconstrued.com
Civil Engineer:
KS Engineers, P.C.
500 Walnut Street, Suite 460
Philadelphia, PA 19106
215-925-0452 | http://www.kseeng.com/
Structural Engineer:
David Mason & Associates
121 S. Broad Street, Suite 1130
Philadelphia, PA 19102
215-572-3400 | http://www.davidmason.com
Plumbing, Electrical and Mechanical Engineer:
Arosa Engineers, LLC
1600 Market St. Suite 1600, Philadelphia, PA 19103
620.459.7900 | www.arosaeengineers.com/
Cost Consultant:
ICD
221 Chestnut Street, Suite 200
Philadelphia, PA 19106
215-523-8886 | http://www.icdcost.com

CITY OF PHILADELPHIA
CAPITAL PROGRAM OFFICE
ONE PARKWAY BUILDING
1515 ARCH STREET, 10TH FLOOR
PHILADELPHIA PENNSYLVANIA
PROJECT TITLE
Russo Park

DRAWING TITLE
STORMWATER DETAILS

PROJECT NO. 16531E-01-02	DRAWING NO. C201
DATE 11.04.2025	
SCALE NTS	
DRAWN BY TV/WH	
CHECKED BY SS	

NOTE: ALL DIMENSIONS AND CONDITIONS SHALL BE GOVERNED BY THE CONTRACT AND THE SPECIFICATIONS UNLESS OTHERWISE INDICATED. BEFORE PROCEEDING WITH THE WORK.



GENERAL NOTES:

1. REFER TO DRAWING E-000 FOR GENERAL NOTES, SYMBOLS AND ABBREVIATIONS.
2. COORDINATE ALL NEW WORK WITH OWNER PRIOR TO START OF WORK.
3. REFER TO E-600 SERIES FOR DETAILS.
4. REFER TO E-800 SERIES FOR PANEL SCHEDULES.
5. ALL CONDUCTORS SHALL BE COLOR-CODED, SINGLE CONDUCTOR, COPPER WIRE OF THE SPECIFIED SIZE. 600V, TYPE THHN/THWN INSULATION.
6. EC SHALL COORDINATE WITH LIGHTING FIXTURE MANUFACTURER FOR CONNECTION REQUIREMENTS OF LIGHTING FIXTURES (IE. QUICK DISCONNECT) AND SHALL MAKE ALL WIRING CONNECTIONS AS REQUIRED.
7. CALL BEFORE YOU DIG (PA ONE CALL SYSTEM 1-800-242-1776 OR DIAL 811). ELECTRICAL CONTRACTOR TO HIRE AN INDEPENDENT UTILITY LOCATING COMPANY TO MARK-OUT CUSTOMER OWNED/PRIVATE PROPERTY FACILITIES BEFORE DIGGING AT ELECTRICAL CONTRACTOR'S EXPENSE.
8. FOR POWER SUPPLY TO NEW EQUIPMENT OR LIGHTING FROM EXISTING CIRCUITS, IN NO CASE SHALL A 120V, 20A/1P CIRCUIT BE LOADED TO OVER 1.92KW AND 240V 20A/2P CIRCUIT BE LOADED TO OVER 3.84KW. MAKE CHANGES AS REQUIRED TO ENSURE COMPLIANT LOADING ON BREAKERS.

KEYED NOTES:

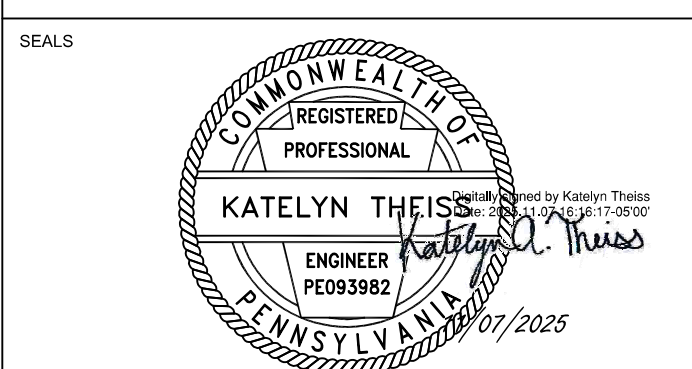
- ① PROVIDE POWER AND CONTROL WIRING TO NEW SPORT LIGHT FIXTURE.
- ② PROVIDE POWER TO NEW NEW POLE MOUNTED LIGHT FIXTURE.
- ③ 3 WAY - 2" DUCT BANK (1C FOR SL) (1C FOR CAMERA PWR (ALT. 1)) (1C FOR CAMERA FIBER (ALT. 1))
- ④ 1 WAY - 2" DUCT (1C WALKWAY PWR)
- ⑤ COORDINATE WITH MANUFACTURER AND PROVIDE BRANCH CIRCUIT FOR STORAGE SHED. STUB UNDERGROUND 1 WAY-2" DUCT UP THROUGH THE DESIGNATED LOCATION IN STORAGE SHED FLOOR AND CONNECT 2" C AND CONDUCTORS UP TO LOAD CENTER LOCATED WITHIN.
- ⑥ ALL EXCAVATION SHALL BE HAND-DUG WITHIN AREA NOTED TO LIMIT DISTURBANCE TO ALL UNDERGROUND TREE INFRASTRUCTURE TO REMAIN. REFER TO CIVIL DRAWINGS FOR MORE INFORMATION.
- ⑦ (ALT. #2) COORDINATE MOUNTING OF CAMERA AND EQUIPMENT WITH OWNER. REFER TO DETAILS FOR EQUIPMENT INFORMATION.
- ⑧ CONDUIT TO ALT. #01 SCOREBOARD TO BE INCLUDED IN BASE BID.

REVISIONS

ISSUE	DATE	REVISIONS
100% BID	11.07.2025	100% Bid Submission
△	02.05.2026	Addendum #02



PROJECT COORDINATOR
1515 Arch Street
Philadelphia, PA 19102



PROJECT TEAM
Landscape Architect:
Ground Reconnoiter
915 Spring Garden Street, Suite 403
Philadelphia, PA 19123
215.750.0727 | www.groundreconnoiter.com
Civil Engineer:
KS Engineers, P.C.
500 Walnut Street, Suite 460,
Philadelphia, PA 19106
215.525.0503 | http://www.kseng.com/
Structural Engineer:
David Mason & Associates
123 S. Broad Street, Suite 1100,
Philadelphia, PA 19109
215-572-3400 | http://www.davidmason.com
Plumbing, Electrical and Mechanical Engineer:
Aroza Engineers, LLC
1800 Market St Suite 1600, Philadelphia, PA 19103
620.459.7900 | www.arozengineers.com/
Cost Consultant:
ICI
221 Chestnut Street, Suite 200
Philadelphia, PA 19106
215-502-8888 | http://www.iciconst.com

CITY OF PHILADELPHIA
CAPITAL PROGRAM OFFICE
ONE PARKWAY BUILDING
1515 ARCH STREET, 10TH FLOOR
PHILADELPHIA PENNSYLVANIA

PROJECT TITLE
Russo Park

DRAWING TITLE
ELECTRICAL NEW WORK PLAN - AREA 2

PROJECT NO. 16531E-01-02	DRAWING NO. E-102
DATE 11.07.2025	SCALE 1" = 20'
DRAWN BY AT	CHECKED BY PL / KAT
NOTE: ALL DIMENSIONS AND CONCENTERS SHALL BE VERIFIED BY THE CONTRACTOR AS THE WORK PROCEEDS AND WITH THE WORK.	
FILE: E-102.DWG	

1 ELECTRICAL NEW WORK PLAN - AREA 2
E-102 Scale: 1" = 20'

