

The Parker – 13th and Bainbridge

Art Opportunity – Request for Qualifications
Responses to questions received by July 17, 2023

Q1: Is there a restriction as to mediums that can be used for the project?

A1: The team is open to a variety of mediums suitable for an exterior setting. The art opportunity area can accommodate surface treatment(s) and/or furniture components. Mediums that are fragile, inappropriate for exterior use, or not welcoming when near members of the public would not be the best fit for this opportunity.

Q2: Will this space be exposed to the elements or enclosed?

A2: Though the proximity of the building may provide some shelter, the space will be exposed to the elements and permanently out of doors. Proposed materials should be well suited to an exterior location with minimal maintenance requirements.

Q3: Will the space be accessible to the public or only for tenants of the building?

A3: The space will be fully publicly accessible.

Q4: Will artists have an opportunity to see the site?

A4: More detailed information about the building and site will be provided to artists invited to participate in the request for proposals stage.

Q5: In the RFQ, the exterior dimensions and the height of the space are clearly marked, but we are curious about the interior dimensions of the walls that will receive surface treatment, as well as measurements for the window cut outs?

A5: See attached drawing.

Q6: We are excited about the community's interest in making the space "a destination." Will we be able to bolt site-specific furniture or structural elements into the ground, foundation, and/or walls of the building?

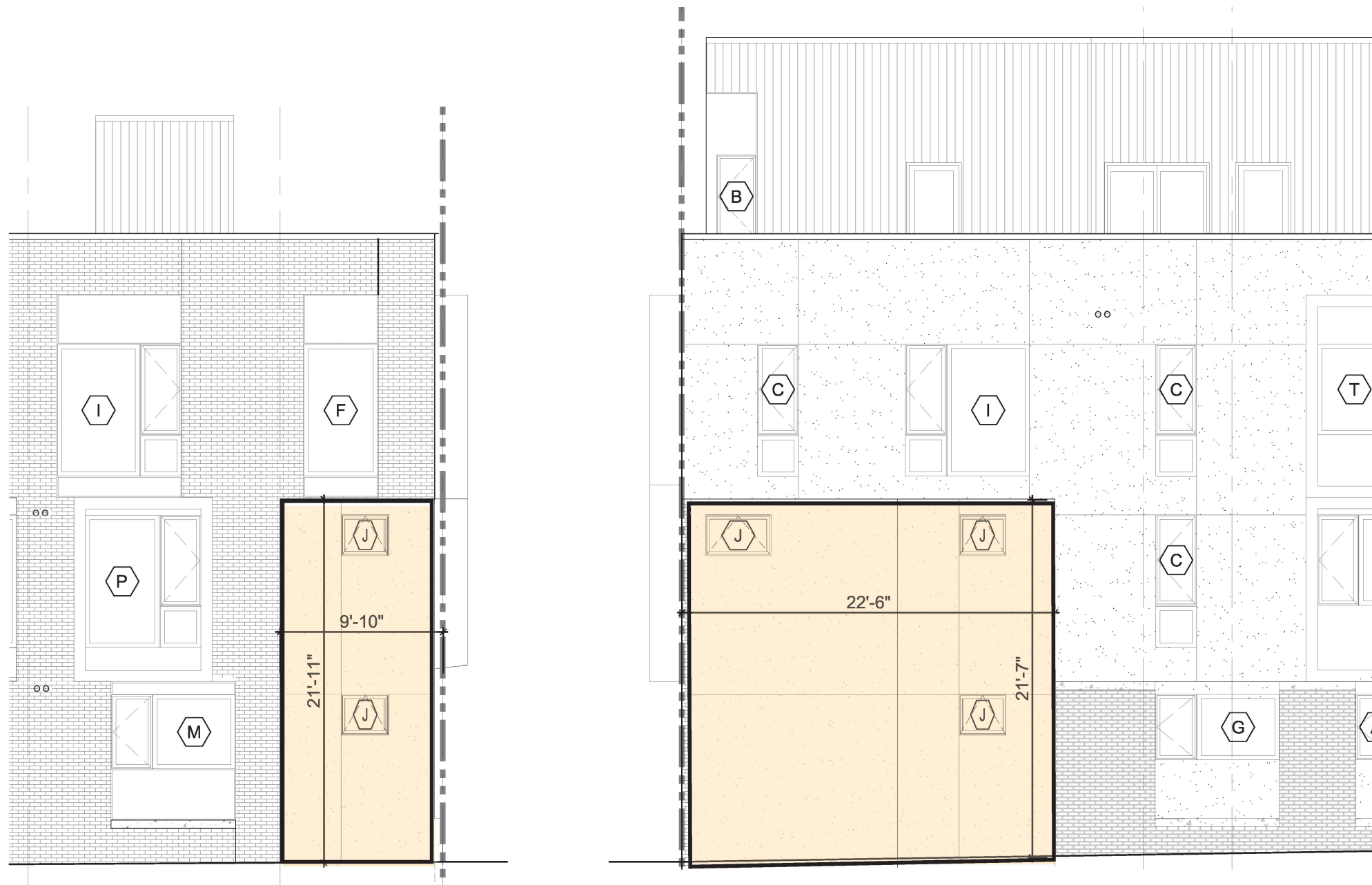
A6: Site-specific furniture is encouraged as part of this art opportunity. There will be an opportunity to discuss more detailed coordination at the request for proposals stage.

Q7: Is the builder incorporating electrical into the exterior or overhang so that we may propose plans to light the space?

A7: The development team is open to approaches that make the space vibrant and welcoming at multiple times of day. There will be an opportunity to discuss more detailed coordination at the request for proposals stage.

Q8: Under the submissions online it asks for a file to be uploaded. What would that file be? A single image of a related type of art? A Word doc expressing my interest with a brief description?

A8: Please reference the "Response Requirements" listed in full on page 7 of the Request for Qualifications. You may include up to 10 images. Additionally, one pdf or word file should be included which contains artist information, a statement of interest, resume, and the image identification sheet. Submissions may be sent through the online form or directly to art@phdc.phila.gov.



"J" Window is 4'-0" wide x 2'-6" high

