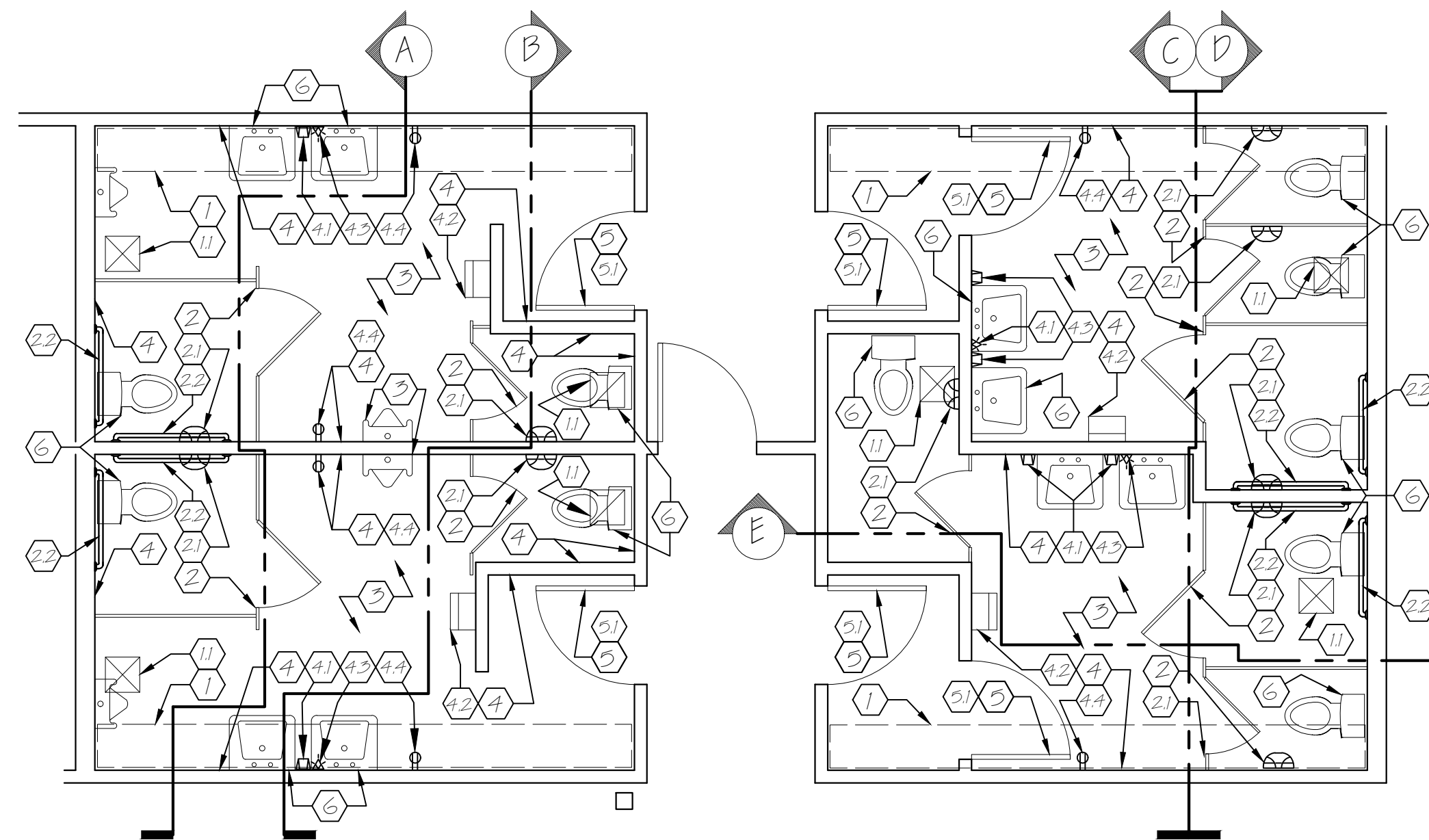


1 PUBLIC & STAFF RESTROOMS - G.C. DEMOLITION PLAN
 B1 1/4" = 1'



2 PUBLIC & STAFF RESTROOMS - G.C. IMPROVEMENTS PLAN
 B1 1/4" = 1'

DEMOLITION NOTES:

- (1) - REMOVE ENTIRELY CEILING SKYLIGHT GLAZING & FRAMING
- (1.1) - CLEAN CEILING & SCRAPE LOSE PAINT
- (1.2) - CEILING LUMINAIRE REMOVAL BY ELECTRICIAN
- (1.3) - REMOVE REGISTER/GRILL & SEAL VENT OUTLET
- (2) - REMOVE TOILET PARTITION & ALL RELATED HARDWARE. AVOID DAMAGING WALL TILES
- (2.1) - REMOVE/SALVAGE TOILET PAPER DISPENSER
- (2.2) - WRAP SEAL GRAB-BARS & TAPE ENTIRE PERIMETER EDGES OF SCUTCHEON PLATES
- (3) - THOROUGHLY CLEAN ALL GROUT JOINTS OF FLOOR TILES & WALL TILES
- (3.1) - USE POWER BRUSH & WATER BLAST WITH VACUUM SQUEEGEE TO REMOVE WATER INSTANTLY
- (3.2) - WATER-DAM & SEAL AT DOOR THRESHOLD
- (4) - THOROUGHLY CLEAN ALL WALL TILES & GROUT JOINTS
- (4.1) - REMOVE/SALVAGE SOAP DISPENSER
- (4.2) - REMOVE/SALVAGE PAPER TOWEL DISPENSER
- (4.3) - WRAP COVER & SEAL FIRE ALARM STROBE LIGHT
- (4.4) - SEAL-COVER ALL POWER OUTLETS
- (5) - CLEAN/SAND/PATCH WOOD DOOR TO RECEIVE NEW FINISH
- (5.1) REMOVE/SALVAGE DOOR'S SIGNAGE
- (6) - THOROUGHLY CLEAN & REMOVE SCALE BUILT-UP ON TOILETS, URINALS & LAVATORIES. REMOVE ALSO ALL SEALANT ALONG THE JOINTS BETWEEN THE FIXTURES & SURFACE TILES
- (7) - DURING CLEANING: VERIFY THAT ALL SURFACES ARE SUITABLE TO RECEIVE INSTALLATION OF NEW TOILET PARTITIONS, SALVAGED TOILET ROOM ACCESSORIES & NEW ELECTRICAL FIXTURES

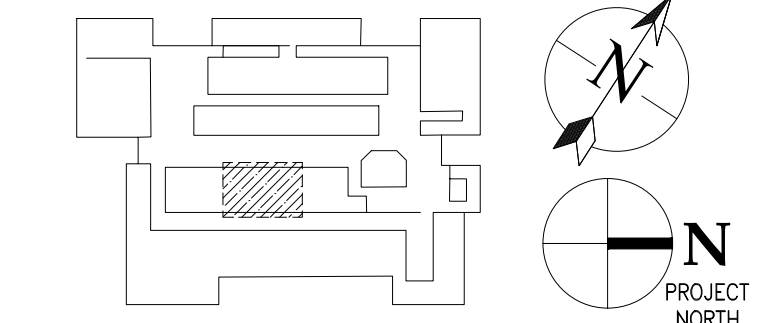
CONSTRUCTION NOTES:

- (1) - INFILL SKYLIGHT OPENING PER DETAIL 3/A.1. FINISH AS SPECIFIED
- (1.1) - PAINT ENTIRE CEILING PER PAINTING SPECS
- (1.2) - PATCH CEILING AFTER LUMINAIRE REMOVAL BY EC
- (1.3) - PATCH CEILING BEFORE INSTALLING GRILL/REGISTER
- (2) - INSTALL NEW TOILET PARTITION & ALL RELATED HARDWARE. AS SPECIFIED. REPLACE DAMAGED WALL TILES
- (2.1) - REINSTALL SALVAGED TOILET PAPER DISPENSER
- (2.2) - CLEAN SHINE GRAB-BARS, REMOVE ADHESIVE RESIDUE FROM SCUTCHEON PLATES & CLEAN/SHINE THEM
- (3) - RESTORE & SEAL WITH EPOXY COATING ALL GROUT JOINTS OF FLOOR TILES
- (3.1) - APPLY GROUT SEALER PER MANUFACTURER'S SPECIFICATIONS
- (3.2) - AVOID STAINING OF SURFACES WITH APPLICATION
- (4) - RESTORE & SEAL WITH EPOXY COATING ALL GROUT JOINTS OF WALL TILES
- (4.1) - CLEAN & RE-INSTALL SOAP DISPENSER
- (4.2) - CLEAN & RE-INSTALL PAPER TOWEL DISPENSER
- (4.3) - REMOVE COVER & CLEAN FIRE ALARM STROBE LIGHT
- (4.4) - REMOVE COVER & CLEAN ALL POWER OUTLETS
- (5) - PAINT EXISTING WOOD DOOR WITH NEW SPECIFIED FINISH
- (5.1) - REINSTALL SALVAGED DOOR'S SIGNAGE
- (6) - APPLY WHITE SEALANT AROUND TOILET'S BASE, THE PERIMETER OF URINALS & THE BACKPLASH OF LAVATORIES
- (7) - AFTER CLEANING: PREPARE ALL SURFACES & MAKE READY TO RECEIVE INSTALLATION OF NEW TOILET PARTITIONS, SALVAGED TOILET ROOM ACCESSORIES & NEW ELECTRICAL FIXTURES

DRAWING LIST:

- A.1 DEMO, FLOOR, AND FINISH PLANS, ROOM ELEVATIONS, CASEWORK DETAILS, NOTES, AND SCHEDULES
- A.2 DEMO AND NEW REFLECTED CEILING AND ELECTRICAL PLANS, DETAILS, NOTES, SCHEDULE
- A.3 PUBLIC AND STAFF RESTROOMS: PLANS, ELEVATIONS, DETAILS, AND SCHEDULES

AREA OF WORK:



REVISIONS

ISSUE	DATE	REVISIONS



PROJECT COORDINATOR:
 MICHAEL MARTELLA

SEAL:
 ARCHITECT:
 CONSULTANT:

CITY OF PHILADELPHIA
 DEPARTMENT OF PUBLIC PROPERTY
 CITY HALL - 7TH FLOOR
 1400 JOHN F. KENNEDY BLVD.
 PHILADELPHIA PENNSYLVANIA

PROJECT TITLE:
 HEALTH CARE CENTER NO. 10
 PHASE 2 INTERIOR IMPROVEMENTS
 1ST FLOOR

DRAWING TITLE:
 PUBLIC & STAFF
 RESTROOMS: DEMOLITION &
 RENOVATION PLANS

PROJECT NO:
 14-18-4745-01

DATE:
 10/07/2019

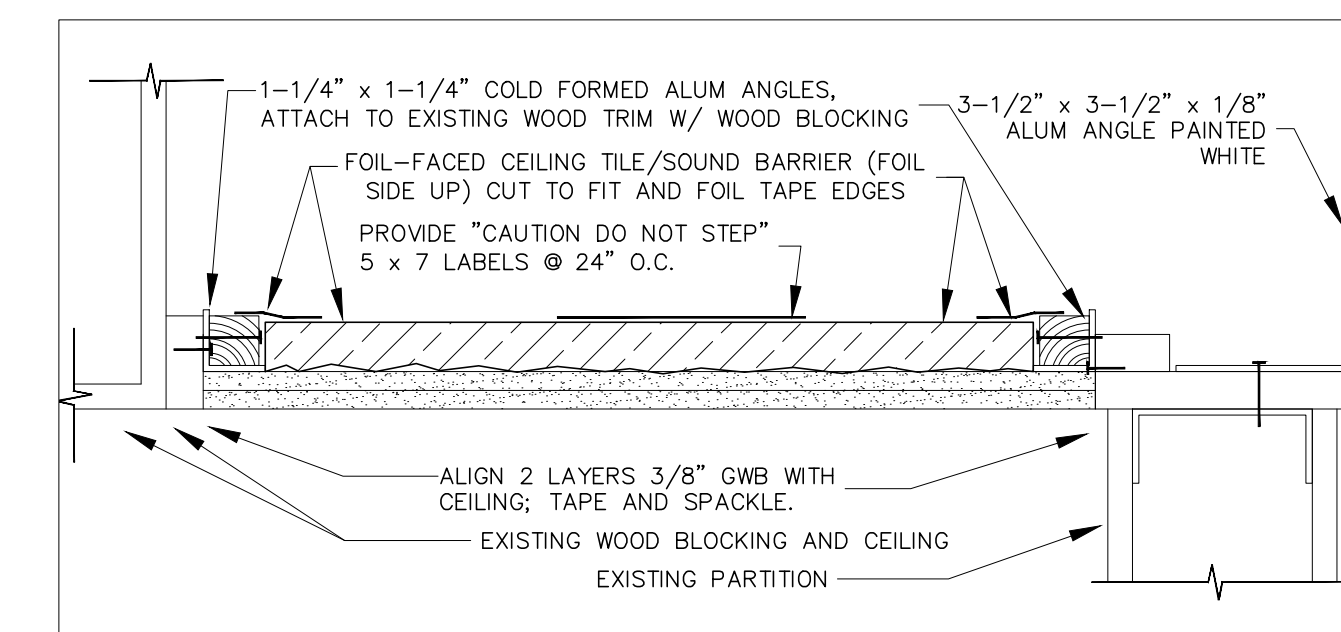
DRAWN BY:
 MD

CHECKED BY:
 MD

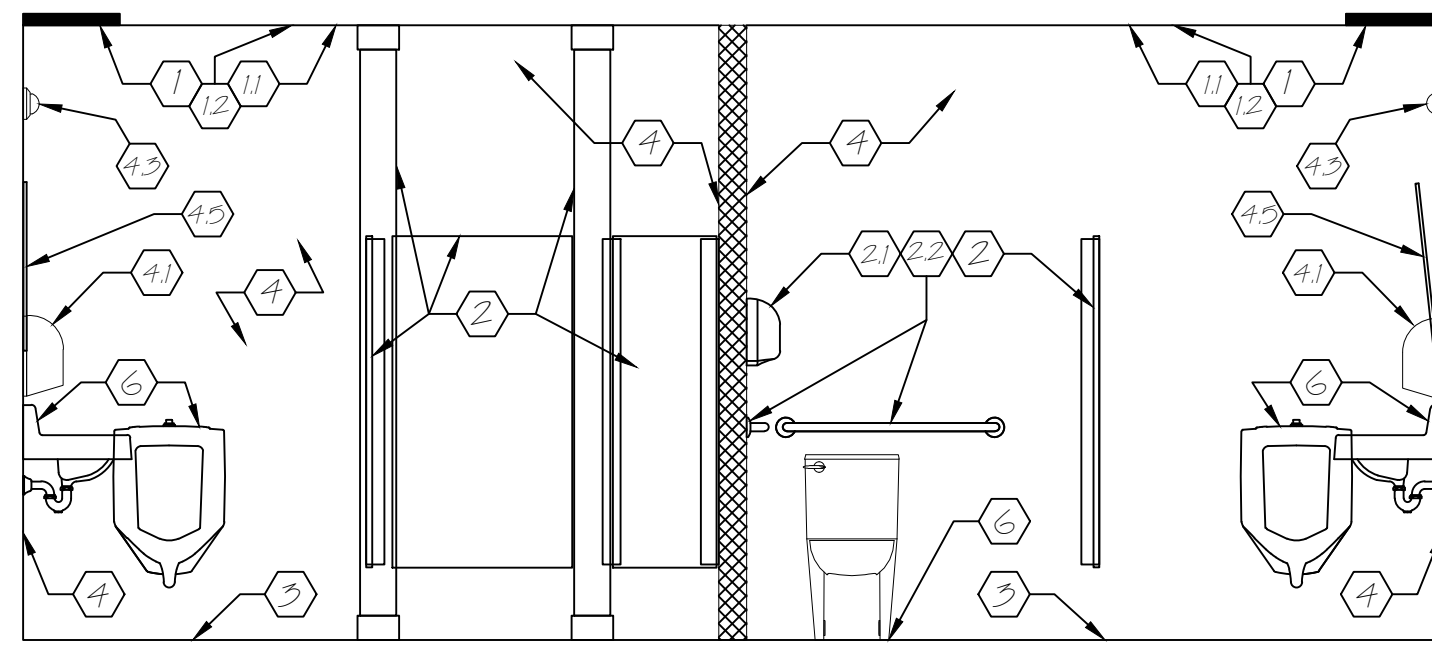
DRAWING NO:
 SK-B1

FILE PATH: /

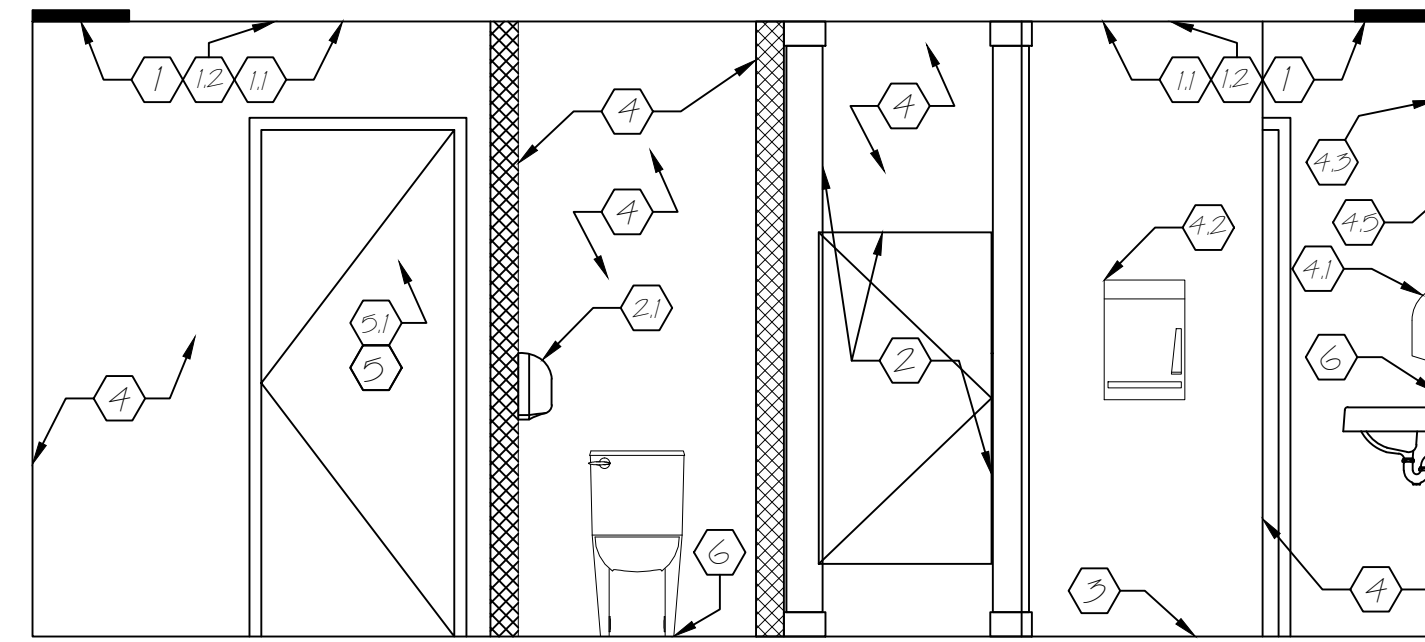
NOTE: ALL DIMENSIONS AND CONDITIONS SHALL BE VERIFIED BY THE CONTRACTOR AT THE SITE BEFORE PROCEEDING WITH THE WORK



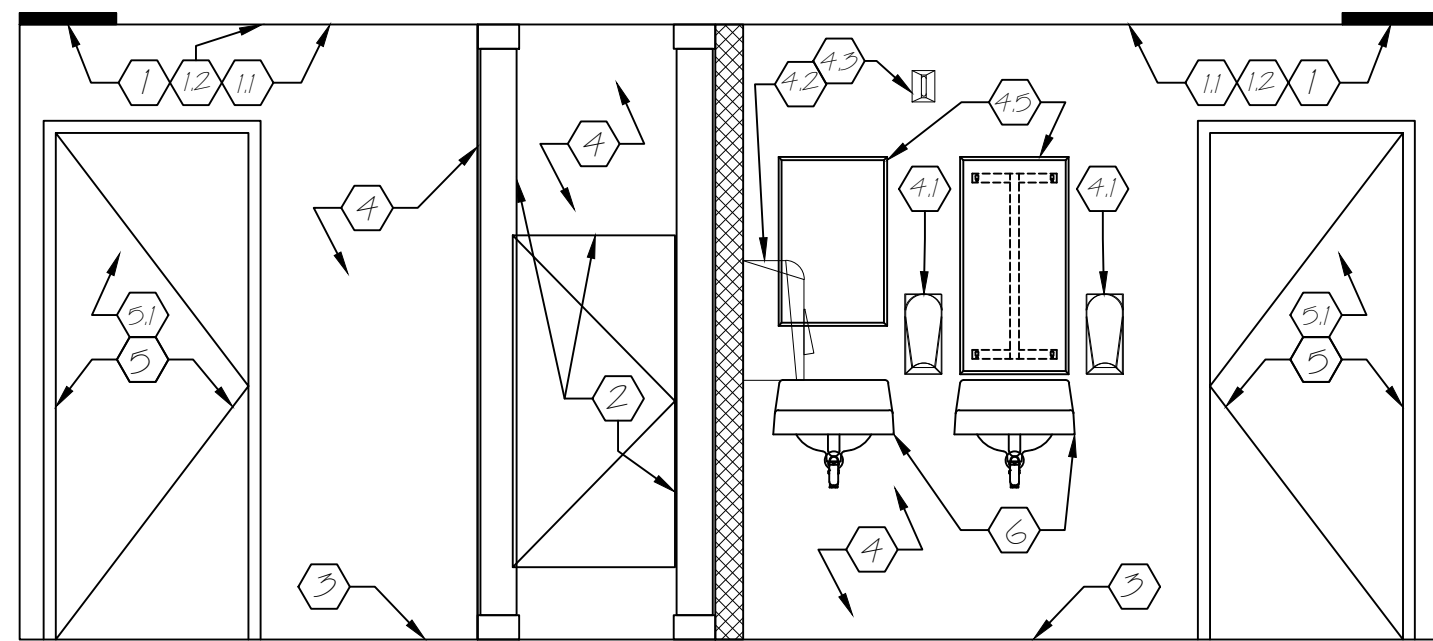
3 ASSEMBLY DETAIL OF INFILL CEILING'S SKYLIGHT
 B1 N.T.S.



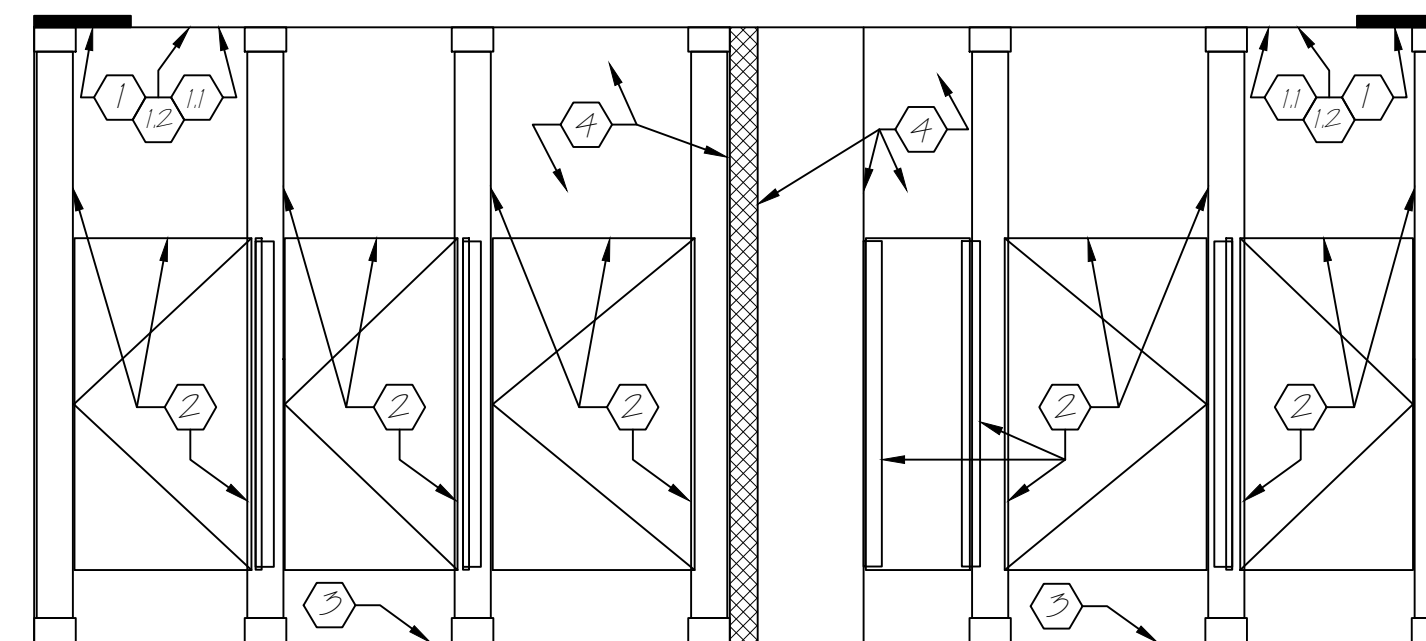
A MEN STAFF & PUBLIC RMS - SOUTH VIEW ELEVATION
B 2 1/4" = 1' (SEE CONSTRUCTION NOTES ON SHEET SK-A1)



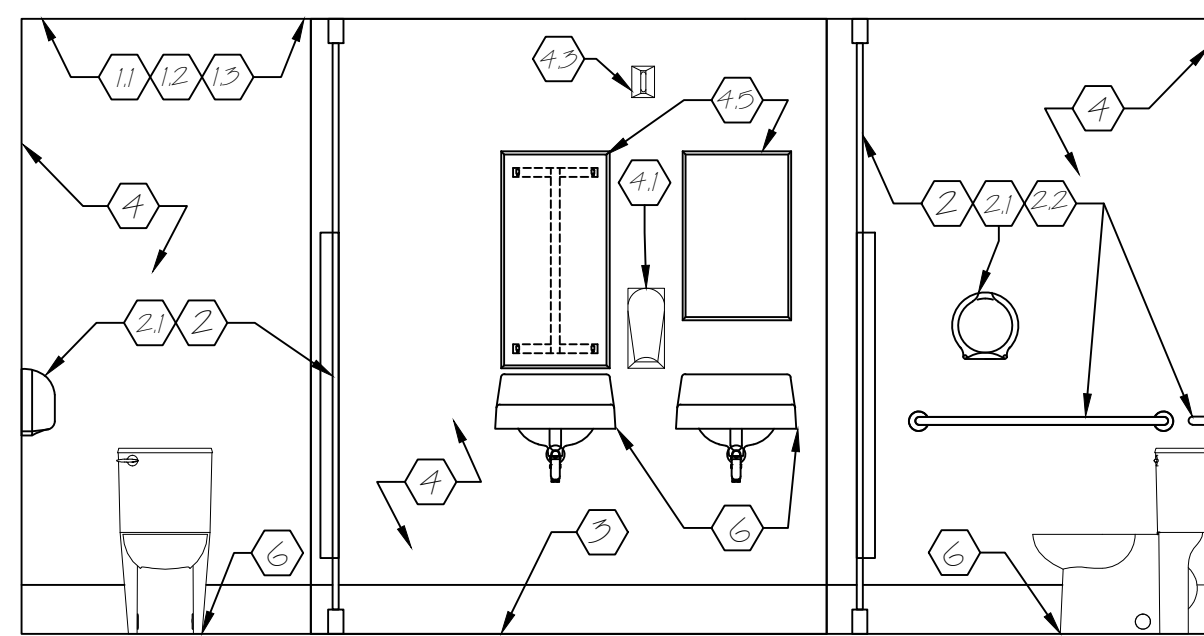
B MEN STAFF & PUBLIC RMS - NORTH VIEW ELEVATION
B 2 1/4" = 1' (SEE CONSTRUCTION NOTES ON SHEET SK-A1)



C WOMEN STAFF & PUBLIC RMS - SOUTH VIEW ELEVATION
B 2 1/4" = 1' (SEE CONSTRUCTION NOTES ON SHEET SK-A1)



D WOMEN & PUBLIC STAFF RMS - NORTH VIEW ELEVATION
B 2 1/4" = 1' (SEE CONSTRUCTION NOTES ON SHEET SK-A1)



E WOMEN STAFF RM - WEST VIEW ELEVATION
B 2 1/4" = 1' (SEE CONSTRUCTION NOTES ON SHEET SK-A1)

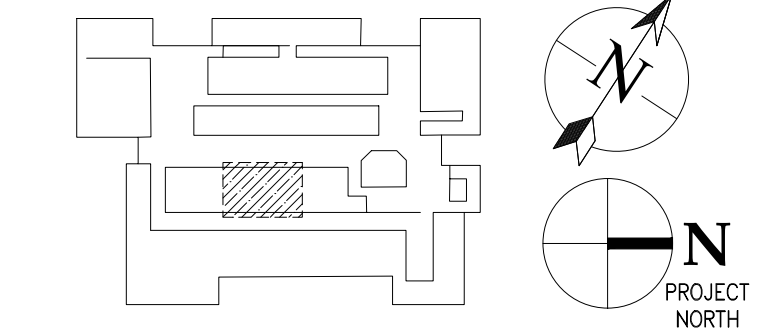
CONSTRUCTION NOTES:

- (1) - INFILL SKYLIGHT OPENING PER DETAIL 3/A-1. FINISH AS SPECIFIED
 - (1.1) - PAINT ENTIRE CEILING PER PAINTING SPECS
 - (1.2) - PATCH CEILING AFTER LUMINAIRE REMOVAL BY EC
 - (1.3) - PATCH CEILING BEFORE INSTALLING GRILL/REG
- (2) - INSTALL NEW TOILET PARTITION & ALL RELATED HARDWARE, AS SPECIFIED. REPLACE DAMAGED WALL TILES
 - (2.1) - REINSTALL SALVAGED TOILET PAPER DISPENSER
 - (2.2) - CLEAN SHINE GRAB-BARS, REMOVE ADHESIVE RESIDUE FROM SCUTCHEON PLATES & CLEAN/SHINE THEM
- (3) - RESTORE & SEAL WITH EPOXY COATING ALL GROUT JOINTS OF FLOOR TILES
 - (3.1) - APPLY GROUT SEALER PER MANUFACTURER'S SPECIFICATIONS
 - (3.2) - AVOID STAINING OF SURFACES WITH APPLICATION
- (4) - RESTORE & SEAL WITH EPOXY COATING ALL GROUT JOINTS OF WALL TILES
 - (4.1) - CLEAN & REINSTALL SOAP DISPENSER
 - (4.2) - CLEAN & REINSTALL PAPER TOWEL DISPENSER
 - (4.3) - REMOVE COVER & CLEAN FIRE ALARM STROBE LIGHT
 - (4.4) - REMOVE COVER & CLEAN ALL POWER OUTLETS
 - (4.5) - CLEAN & REINSTALL MIRRORS
- (5) - PAINT EXISTING WOOD DOOR & HM FRAME WITH SPECIFIED FINISH
 - (5.1) - RE-INSTALL DOOR'S SIGNAGE.
- (6) - APPLY WHITE SEALANT AROUND THE BASE OF TOILETS, THE PERIMETER OF URINALS & THE BACKSPLASH OF LAVATORIES
- (7) - AFTER CLEANING; PREPARE ALL SURFACES, MAKE READY TO RECEIVE INSTALLATION OF: NEW TOILET PARTITIONS, SALVAGED TOILET ROOM ACCESSORIES & NEW ELECTRICAL FIXTURES

DRAWING LIST:

- A.1 DEMO, FLOOR, AND FINISH PLANS, ROOM ELEVATIONS, CASEWORK DETAILS, NOTES, AND SCHEDULES
- A.2 DEMO AND NEW REFLECTED CEILING AND ELECTRICAL PLANS, DETAILS, NOTES, SCHEDULE
- A.3 PUBLIC AND STAFF RESTROOMS: PLANS, ELEVATIONS, DETAILS, AND SCHEDULES

AREA OF WORK:



REVISIONS

ISSUE	DATE	REVISIONS



PROJECT COORDINATOR:
 MICHAEL MARTELLA

SEAL:

ARCHITECT:

CONSULTANT:

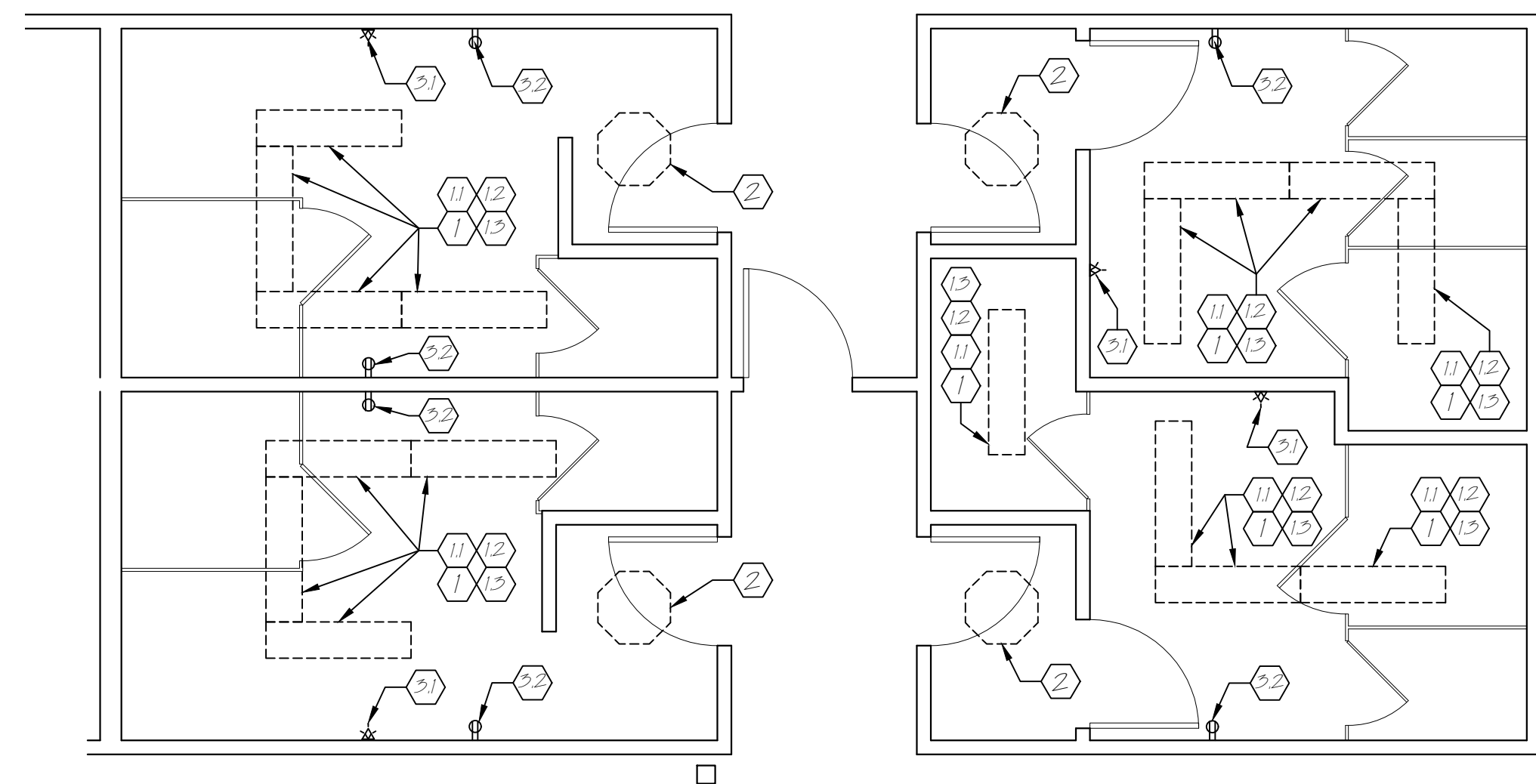
CITY OF PHILADELPHIA
 DEPARTMENT OF PUBLIC PROPERTY
 CITY HALL - 7TH FLOOR
 1400 JOHN F. KENNEDY BLVD.
 PHILADELPHIA PENNSYLVANIA

PROJECT TITLE:
HEALTH CARE CENTER NO. 10
PHASE 2 INTERIOR IMPROVEMENTS
1ST FLOOR

DRAWING TITLE:
PUBLIC & STAFF
RESTROOMS: NEW
ELEVATIONS/SECTIONS

PROJECT NO: 14-18-4745-01	DRAWING NO: SK-B2
DATE: 10/07/2019	
DRAWN BY: MD	
CHECKED BY: MD	FILE PATH: /

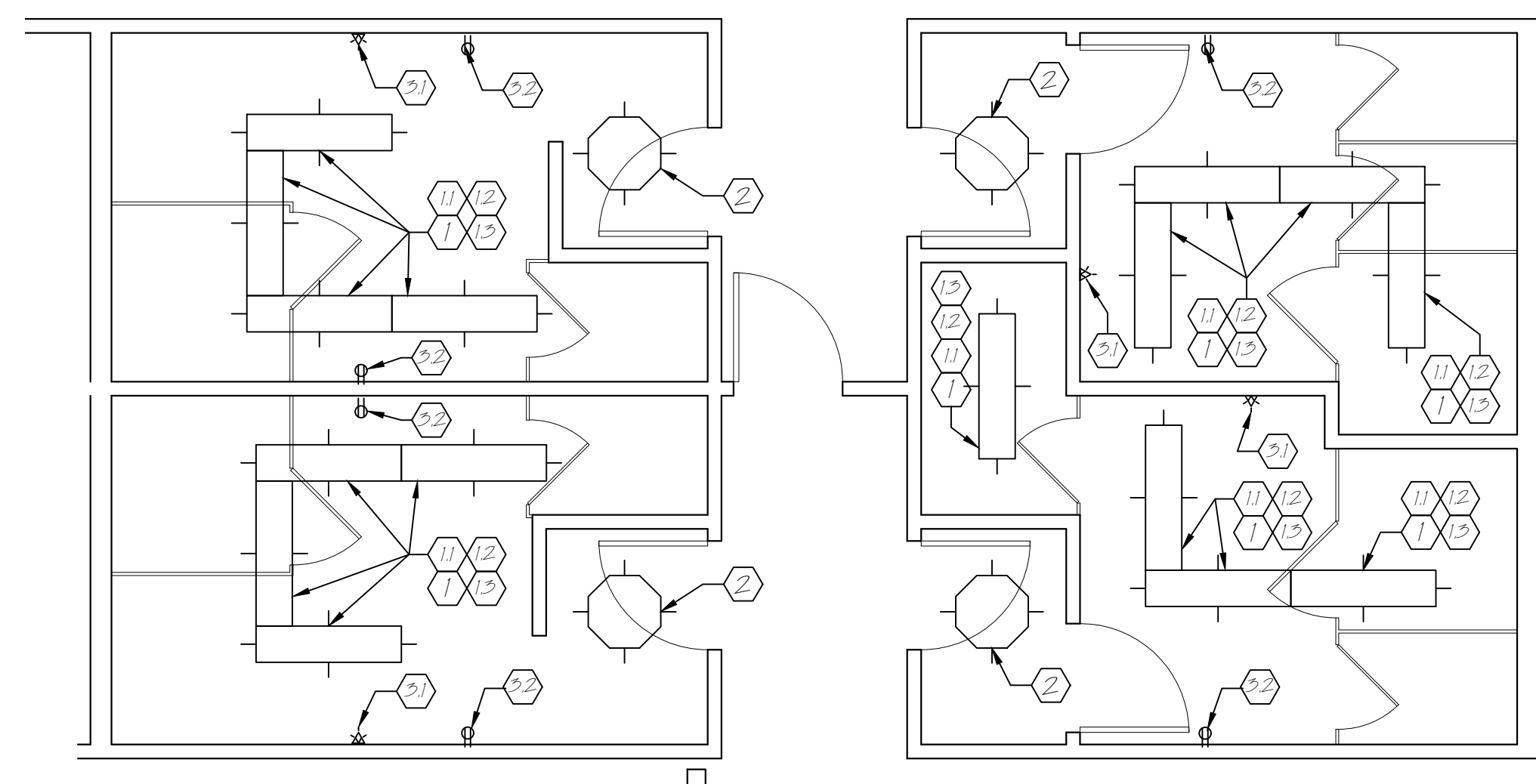
NOTE: ALL DIMENSIONS AND CONDITIONS SHALL BE VERIFIED BY THE CONTRACTOR AT THE SITE BEFORE PROCEEDING WITH THE WORK



1 PUBLIC & STAFF RESTROOMS - ELECTRICAL DEMOLITION PLAN
 BE1 1/4" = 1'

ELECTRICAL DEMOLITION NOTES:

- (1) - REMOVE & DISPOSE OF ALL RECTANGULAR SURFACE MOUNTED CEILING LUMINAIRE
- (1.1) - VERIFY WIRING ARE SUITABLE FOR REUSE
- (1.2) - VERIFY JUNCTION BOXES ARE GROUNDED & SECURED
- (1.3) - VERIFY AFTER REMOVAL OF LUMINAIRE THAT FASTENING SUBSTRATES ARE SUITABLE FOR REUSE
- (2) - REMOVE/SALVAGE SURFACE MOUNTED OCTAGONAL LUMINAIRE TO ALLOW APPLICATION OF NEW FINISH ON CEILING
- (3) - BEFORE THE GC WASH CLEAN THE WALLS:
 - (3.1) - EC WRAP COVER & SEAL FIRE ALARM STROBE LIGHT TO AVOID ANY FLOW OF WATER ENTERING INTO THE DEVICE & THE JUNCTION BOX
 - (3.2) - EC TO SEAL ELECTRICAL OUTLET TO AVOID ANY FLOW OF WATER ENTERING INTO THE DEVICE & THE JUNCTION BOX



1 PUBLIC & STAFF RESTROOMS - ELECTRICAL RENOVATION PLAN
 BE1 1/4" = 1'

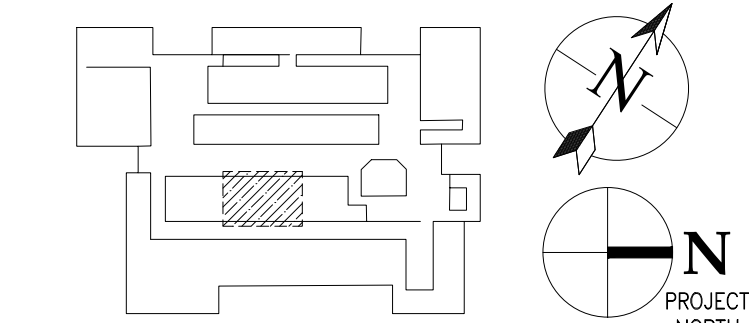
ELECTRICAL CONSTRUCTION NOTES:

- (1) - INSTALL NEW RECTANGULAR SURFACE MOUNTED CEILING LUMINAIRE: "KURTZON D-PROFILE WRAP" www.kurtzon.com VL-D-3-40-3/LDR-940-UNV-FC-CRM-SW
 - (1.1) - REUSE EXISTING WIRING WHEN EC DETERMINE SUITABLE FOR A SAFE & OPERATION
 - (1.2) - GUARANTEE THAT ALL JUNCTION BOXES ARE GROUNDED & SECURED
 - (1.3) - FASTEN LUMINAIRE TO EXISTING SUBSTRATES WHEN SUITABLE TO PROVIDE PERMANENT SUPPORT LOAD CAPACITY
- (2) - REINSTALL SALVAGE SURFACE MOUNTED OCTAGONAL LUMINAIRE AFTER APPLICATION OF NEW FINISH ON CEILING
- (3) - AFTER GC WASH CLEANED THE WALLS & ARE FREE OF DETERGENT AND ANY OTHER SUBSTANCES:
 - (3.1) - EC TO CLEAN FIRE ALARM STROBE LIGHT AFTER REMOVING WRAP COVER & SEALING PRODUCT
 - (3.2) - EC TO REPLACE ELECTRICAL OUTLET'S COVER PLATE WITH NEW SS TYPE

DRAWING LIST:

- A.1 DEMO, FLOOR, AND FINISH PLANS, ROOM ELEVATIONS, CASEWORK DETAILS, NOTES, AND SCHEDULES
- A.2 DEMO AND NEW REFLECTED CEILING AND ELECTRICAL PLANS, DETAILS, NOTES, SCHEDULE
- A.3 PUBLIC AND STAFF RESTROOMS: PLANS, ELEVATIONS, DETAILS, AND SCHEDULES

AREA OF WORK:



REVISIONS

ISSUE	DATE	REVISIONS



PROJECT COORDINATOR:
 MICHAEL MARTELLA

SEAL:

ARCHITECT:

CONSULTANT:

CITY OF PHILADELPHIA
 DEPARTMENT OF PUBLIC PROPERTY
 CITY HALL - 7TH FLOOR
 1400 JOHN F. KENNEDY BLVD.
 PHILADELPHIA PENNSYLVANIA

PROJECT TITLE:
 HEALTH CARE CENTER NO. 10
 PHASE 2 INTERIOR IMPROVEMENTS
 1ST FLOOR

DRAWING TITLE:
 PUBLIC & STAFF
 RESTROOMS: ELECTRICAL
 DEMOLITION & RENOVATION
 PLANS

PROJECT NO: 14-18-4745-01	DRAWING NO: SK-BE1
DATE: 10/07/2019	
DRAWN BY: MD	
CHECKED BY: MD	FILE PATH: /

NOTE: ALL DIMENSIONS AND CONDITIONS SHALL BE VERIFIED BY THE CONTRACTOR AT THE SITE BEFORE PROCEEDING WITH THE WORK