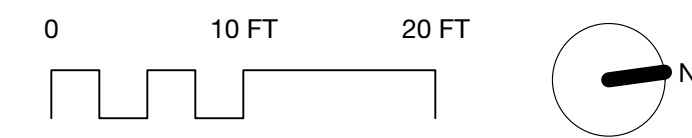


LEGEND

- LIMIT OF DISTURBANCE
- P.O.B. POINT OF BEGINNING
- 12'-4 1/4" LINEAR DIMENSION
- ANGLE
- 210.36°
- 9'-3 1/2" ARCH LENGTH
- R 13'-1 3/4" RADIUS

NOTE:

- LAYOUT OF PLAY EQUIPMENT IS APPROXIMATE. CONTRACTOR TO FIELD VERIFY EQUIPMENT LOCATION THAT MEETS SAFETY SURFACE FALL ZONE REQUIREMENTS.
- SPECIFICATION 323116 STATES FIELD VERIFIED SHOP DRAWING ARE REQUIRED.



ISSUE	DATE	DESCRIPTION
1	05/06/2020	ADDENDUM 1-SWINGS



PROJECT COORDINATOR
Philadelphia Parks & Recreation
1515 Arch Street, 10th Floor
Philadelphia, PA 19102



PROJECT TEAM
Landscape Architect:
Ground Reconsidered
230 South Broad Street, Suite 604
Philadelphia, PA 19102
215.790.0727 | www.groundreconsidered.com

Civil Engineer:
KS Engineers, P.C.
35 S 3rd St.
Philadelphia, PA 19106
215.925.0425 | http://www.kseng.com/

Plumbing, Electrical and Mechanical Engineer:
Arora Engineers, LLC
1600 Market St Suite 1630,
Philadelphia, PA 19103
620.459.7900 | www.aroraengineers.com/

CITY OF PHILADELPHIA
PHILADELPHIA PARKS & RECREATION
1515 ARCH STREET
11TH FLOOR, ONE PARKWAY BUILDING
PHILADELPHIA, PENNSYLVANIA

PROJECT TITLE
East Poplar Playground

DRAWING TITLE

LAYOUT PLAN

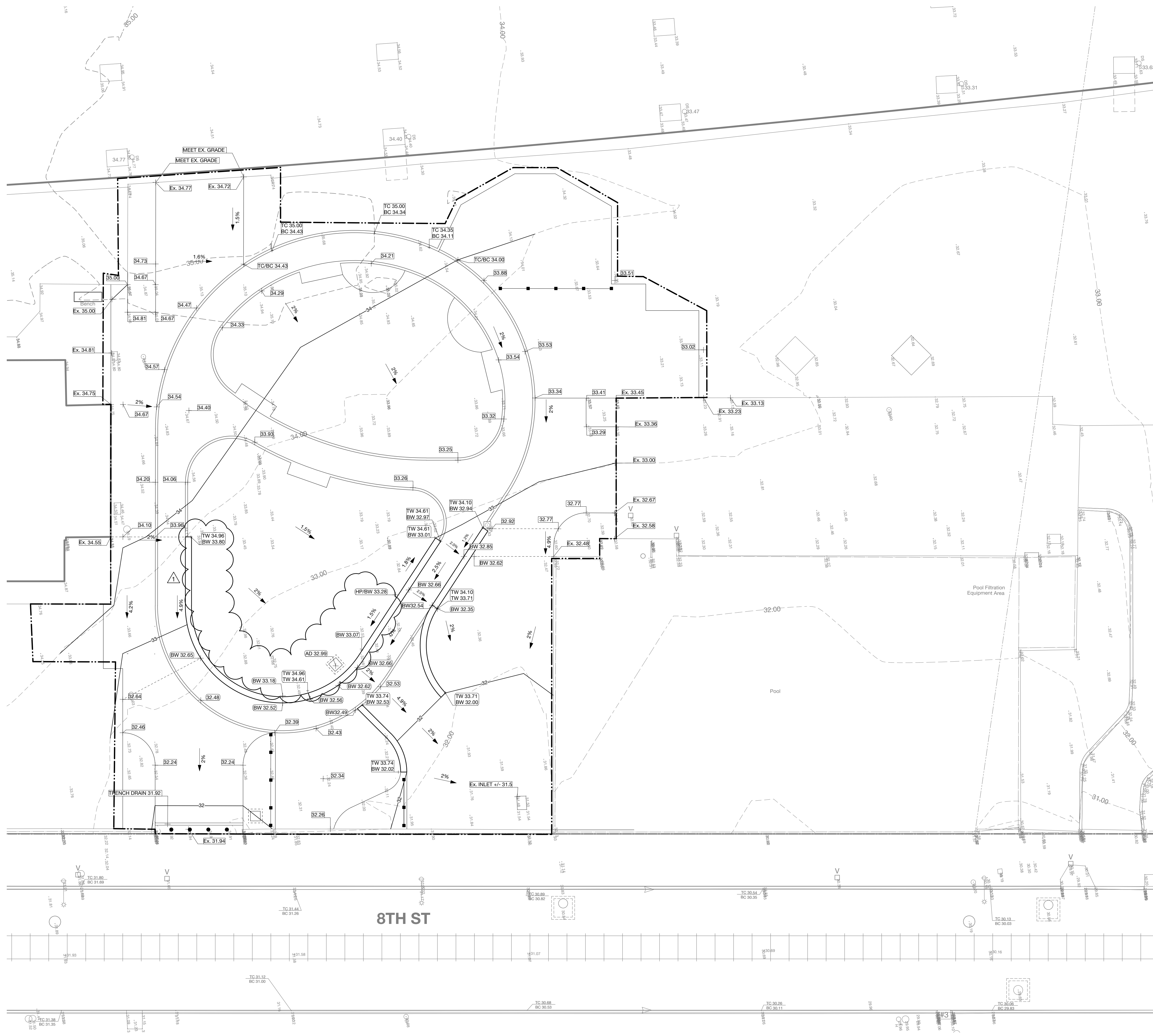
PROJECT NO. **DRAWING NO.**

DATE: 02.07.2020
SCALE: 1" = 10'

DRAWN BY: WM/UB/JJD
CHECKED BY: JB

FILE:
NOTE: ALL DIMENSIONS AND CONDITIONS SHALL BE VERIFIED BY THE CONTRACTOR AT THE SITE BEFORE PROCEEDING WITH THE WORK.

L-1.2

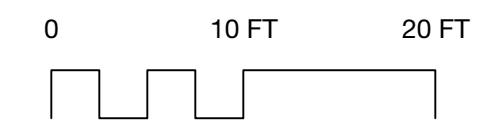


LEGEND

- LIMIT OF DISTURBANCE
- +29.20 PROPOSED SPOT ELEVATION
- +TC 35.00 TOP OF CURB
- +BC 34.50 BOTTOM OF CURB
- +TW 33.88 TOP OF WALL
- +BW 32.38 BOTTOM OF WALL
- +33.00 EXISTING SPOT ELEVATION
- 32— PROPOSED CONTOUR
- - -32- - - EXISTING CONTOUR
- 2% SLOPE

NOTES:

1. PRESERVE AND PROTECT ALL EXISTING TO REMAIN STRUCTURES, FURNISHING, SURFACE MATERIALS, ABOVE AND BELOW GRADE UTILITIES, FOOTING AND VEGETATION WITHIN AND ADJACENT TO CONSTRUCTION AREA DURING ALL PHASES OF DEMOLITION AND CONSTRUCTION.
2. MEET ALL EXISTING GRADES AT ALL EDGES OF PROJECT. ADJUST EXISTING INLETS, DRAINS, VENTS, VALVE, ETC. TO MEET FINISH GRADES.
3. VERIFY EXISTING CONDITION SPOT ELEVATIONS PRIOR TO START OF WORK. NOTIFY LANDSCAPE ARCHITECT IF EX. SPOT ELEVATIONS OR PROPOSED SLOPES CANNOT BE ACHIEVED.
4. CROSS SLOPE SHALL NOT EXCEED 2%. LONGITUDINAL SLOPE SHALL NOT EXCEED 4.9%.



REVISONS		
ISSUE	DATE	DESCRIPTION
1	05/06/2020	ADDENDUM 1-SWINGS



PROJECT COORDINATOR
Philadelphia Parks & Recreation
1515 Arch Street, 10th Floor
Philadelphia, PA 19102

SEAL



PROJECT TEAM
Landscape Architect:
Ground Reconsidered
230 South Broad Street, Suite 604
Philadelphia, PA 19102
215.790.0727 | www.groundreconsidered.com

Civil Engineer:
KS Engineers, P.C.
35 S 3rd St.
Philadelphia, PA 19106
215.925.0425 | http://www.kseng.com/

Plumbing, Electrical and Mechanical Engineer:
Arora Engineers, LLC
1600 Market St Suite 1630,
Philadelphia, PA 19103
620.459.7900 | www.aroraengineers.com/

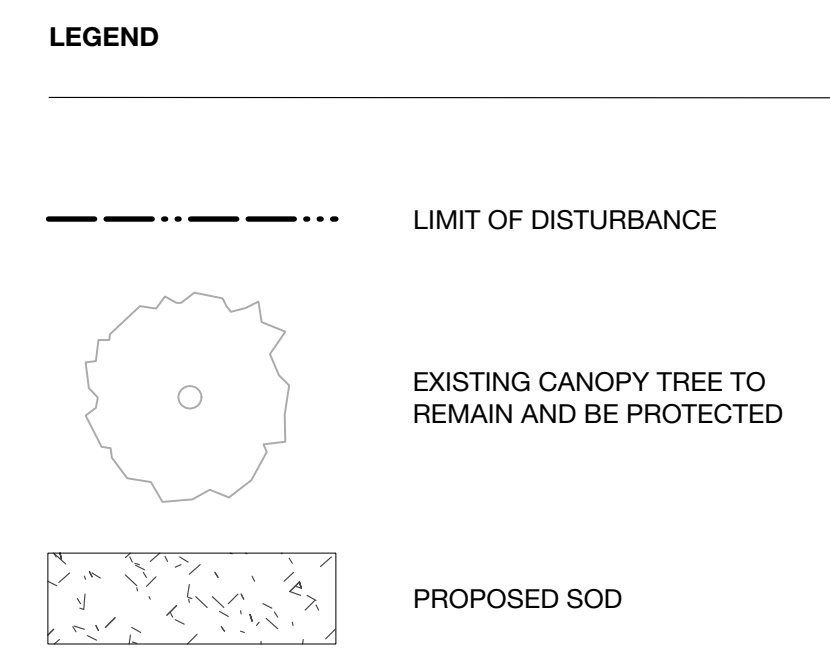
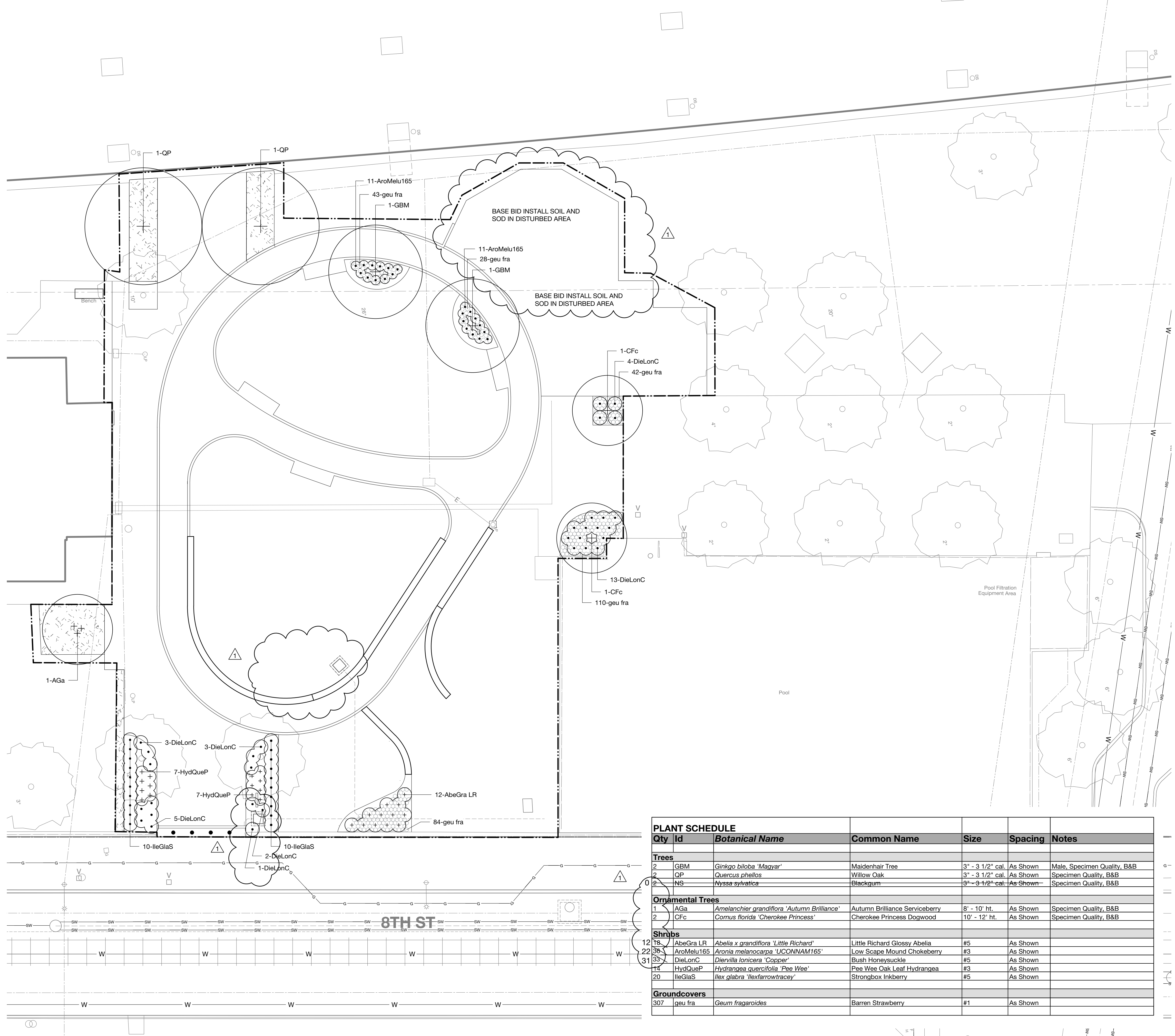
CITY OF PHILADELPHIA
PHILADELPHIA PARKS & RECREATION
1515 ARCH STREET
11TH FLOOR, ONE PARKWAY BUILDING
PHILADELPHIA, PENNSYLVANIA

PROJECT TITLE
East Poplar Playground

DRAWING TITLE
GRADING PLAN

PROJECT NO.	DRAWING NO.
DATE: 02.07.2020	L-1.3
SCALE: 1" = 10'	
DRAWN BY: WM/UB/JJD	
CHECKED BY: JB	

NOTE: ALL DIMENSIONS AND CONDITIONS SHALL BE VERIFIED BY THE CONTRACTOR AT THE SITE BEFORE PROCEEDING WITH THE WORK.



NOTES:

- REFER TO L-2.4 FOR PLANTING DETAILS.
- SEED ALL AREAS DISTURBED BY CONSTRUCTION ACTIVITIES.

PLANT SCHEDULE						
Qty	Id	Botanical Name	Common Name	Size	Spacing	Notes
Trees						
2	GBM	<i>Ginkgo biloba</i> 'Magyar'	Maidenhair Tree	3' - 3 1/2" cal.	As Shown	Male, Specimen Quality, B&B
2	QP	<i>Quercus phellos</i>	Willow Oak	3' - 3 1/2" cal.	As Shown	Specimen Quality, B&B
10	NS	<i>Nyssa sylvatica</i>	Blackgum	3" - 3 1/2" cal.	As Shown	Specimen Quality, B&B
Ornamental Trees						
1	AGa	<i>Amelanchier grandiflora</i> 'Autumn Brilliance'	Autumn Brilliance Serviceberry	8' - 10' ht.	As Shown	Specimen Quality, B&B
2	CFc	<i>Cornus florida</i> 'Cherokee Princess'	Cherokee Princess Dogwood	10' - 12' ht.	As Shown	Specimen Quality, B&B
Shrubs						
12	18	<i>Abelonia x grandiflora</i> 'Little Richard'	Little Richard Glossy Abelia	#5	As Shown	
22	36	<i>Aronia melanocarpa</i> 'UCONNAM165'	Low Scape Mound Chokeberry	#3	As Shown	
33	33	<i>Diervilla lonicera</i> 'Copper'	Bush Honeysuckle	#5	As Shown	
31	14	<i>Hydrangea quercifolia</i> 'Pee Wee'	Pee Wee Oak Leaf Hydrangea	#3	As Shown	
20	20	<i>Ilex glabra</i> 'Ilexfarlowtracy'	Strongbox Inkberry	#5	As Shown	
Groundcovers						
307	geu fra	<i>Geum fragaroides</i>	Barren Strawberry	#1	As Shown	

REVISIONS		
ISSUE	DATE	DESCRIPTION
1	05/06/2020	ADDENDUM 1-SWINGS

PROJECT COORDINATOR
 Philadelphia Parks & Recreation
 1515 Arch Street, 10th Floor
 Philadelphia, PA 19102

SEAL

PROJECT TEAM
Landscape Architect:
Ground Reconsidered
 230 South Broad Street, Suite 604
 Philadelphia, PA 19102
 215.790.0727 | www.groundreconsidered.com

Civil Engineer:
 KS Engineers, P.C.
 35 S 3rd St.
 Philadelphia, PA 19106
 215.925.0425 | http://www.kseng.com/

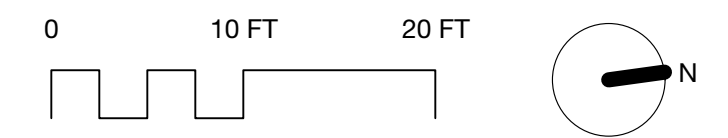
Plumbing, Electrical and Mechanical Engineer:
 Arora Engineers, LLC
 1600 Market St Suite 1630,
 Philadelphia, PA 19103
 620.459.7900 | www.aroraengineers.com/

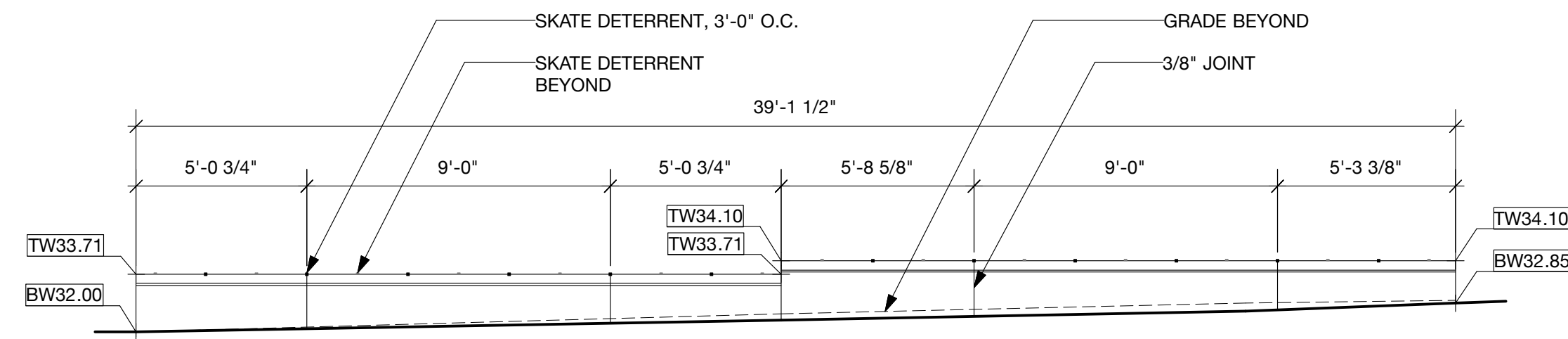
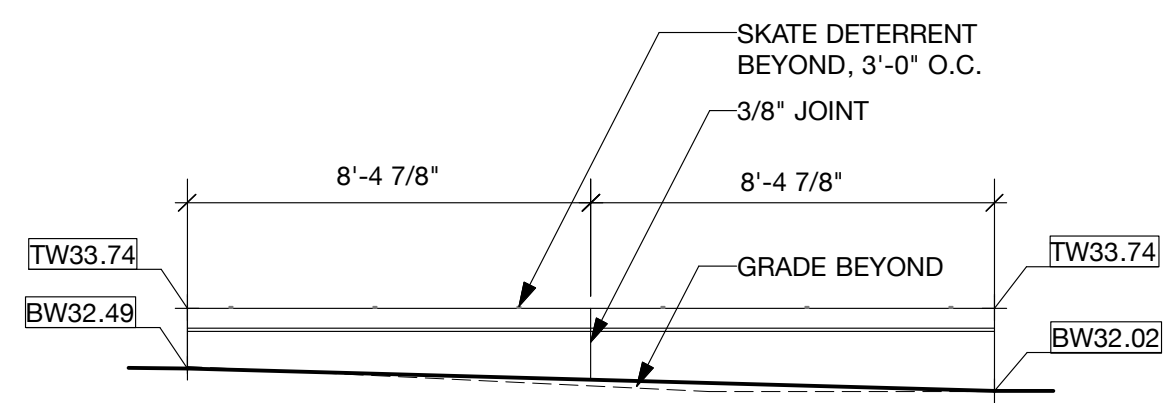
CITY OF PHILADELPHIA
PHILADELPHIA PARKS & RECREATION
 1515 ARCH STREET
 11TH FLOOR, ONE PARKWAY BUILDING
 PHILADELPHIA, PENNSYLVANIA

PROJECT TITLE
East Poplar Playground

DRAWING TITLE
PLANTING PLAN

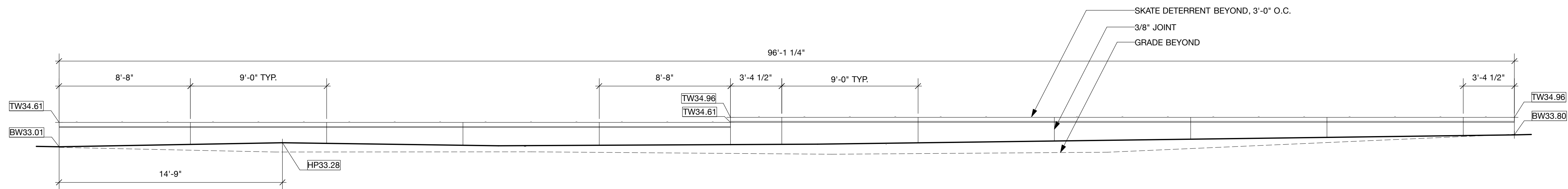
PROJECT NO.	DRAWING NO.
DATE: 02.07.2020	L-1.4
SCALE: 1" = 10'	
DRAWN BY: WM/UB/JJD	CHECKED BY: JB
NOTE: ALL DIMENSIONS AND CONDITIONS SHALL BE VERIFIED BY THE CONTRACTOR AT THE SITE BEFORE PROCEEDING WITH THE WORK.	





1 FLATTENED CURVED CONCRETE WALL ELEVATION - 6-23 MONTH PLAY AREA
Scale: 1/4" = 1'-0"

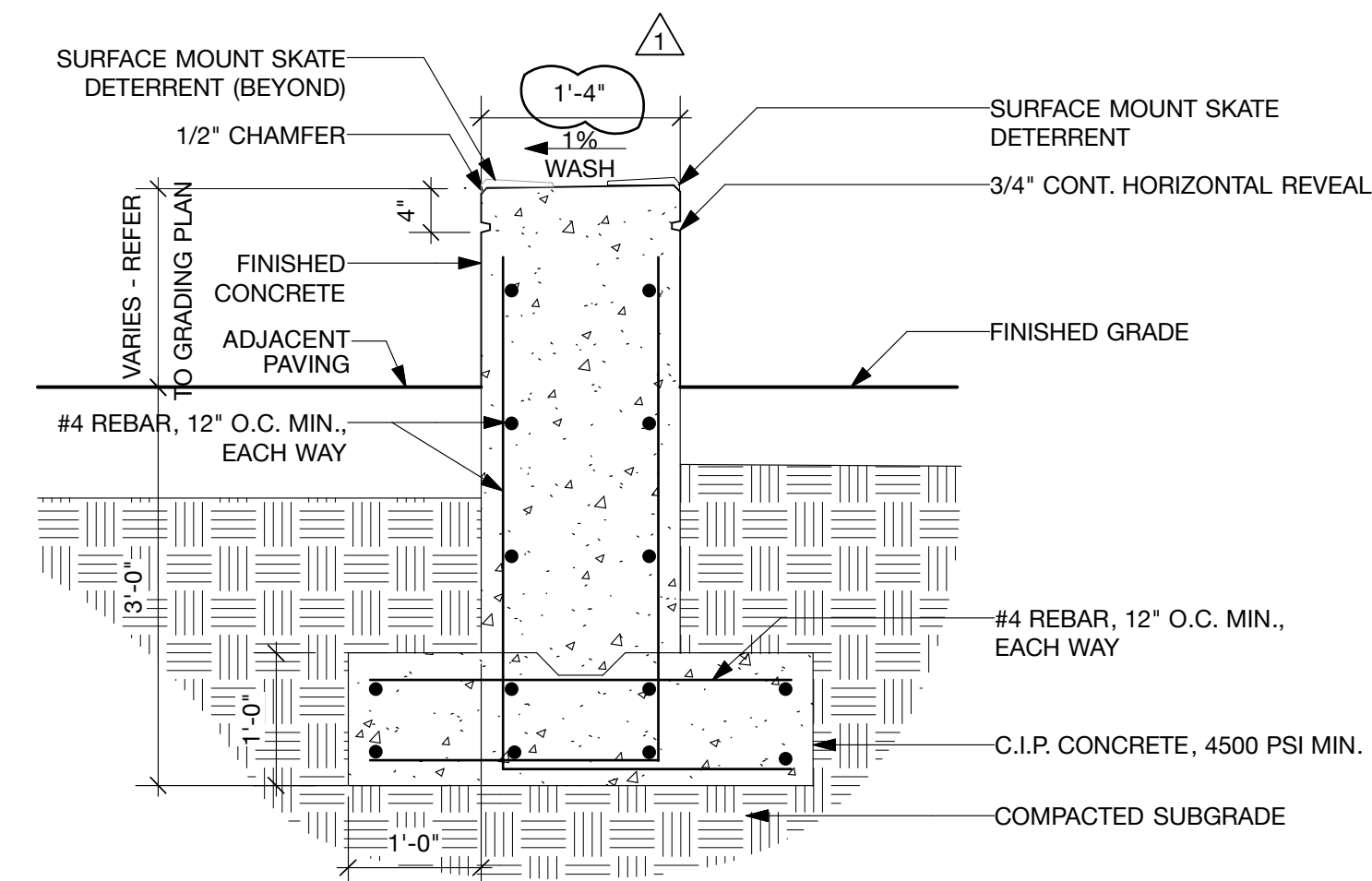
2 FLATTENED CURVED CONCRETE WALL ELEVATION - SPRAYGROUND
Scale: 1/4" = 1'-0"



3 FLATTENED CURVED CONCRETE WALL ELEVATION - AGE 2-5 PLAY AREA
Scale: 1/4" = 1'-0"

NOTE:

1. ASSUME 9'-0" O.C. VERTICAL JOINTING
2. SKATE DETERRENTS SHALL BE INSTALLED ON SIDES OF WALLS ADJACENT TO ASPHALT AND CONCRETE, NOT SAFETY SURFACE.



4 FREESTANDING SEAT WALL SECTION
Scale: 3/4" = 1'-0"

REVISIONS

ISSUE	DATE	DESCRIPTION
1	05/06/2020	ADDENDUM 1-SWINGS



PROJECT COORDINATOR
Philadelphia Parks & Recreation
and Department of Public Property
1515 Arch Street, 10th Floor
Philadelphia, PA 19102
Contact: Nancy Q. O'Donnell, 215.832.2174

SEAL



PROJECT TEAM
Landscape Architect:
Ground Reconsidered
230 South Broad Street, Suite 604
Philadelphia, PA 19102
215.790.0727 | www.groundreconsidered.com
Civil and Structural Engineer:
KS Engineers, P.C.
35 S 3rd St.
Philadelphia, PA 19106
215.925.0425 | http://www.kseng.com/
Plumbing, Electrical and Mechanical Engineer:
Arora Engineers, LLC
1600 Market St Suite 1630,
Philadelphia, PA 19103
620.459.7900 | www.aroraengineers.com/

CITY OF PHILADELPHIA
DEPARTMENT OF PUBLIC PROPERTY
1515 ARCH STREET
11TH FLOOR, ONE PARKWAY BUILDING
PHILADELPHIA, PENNSYLVANIA

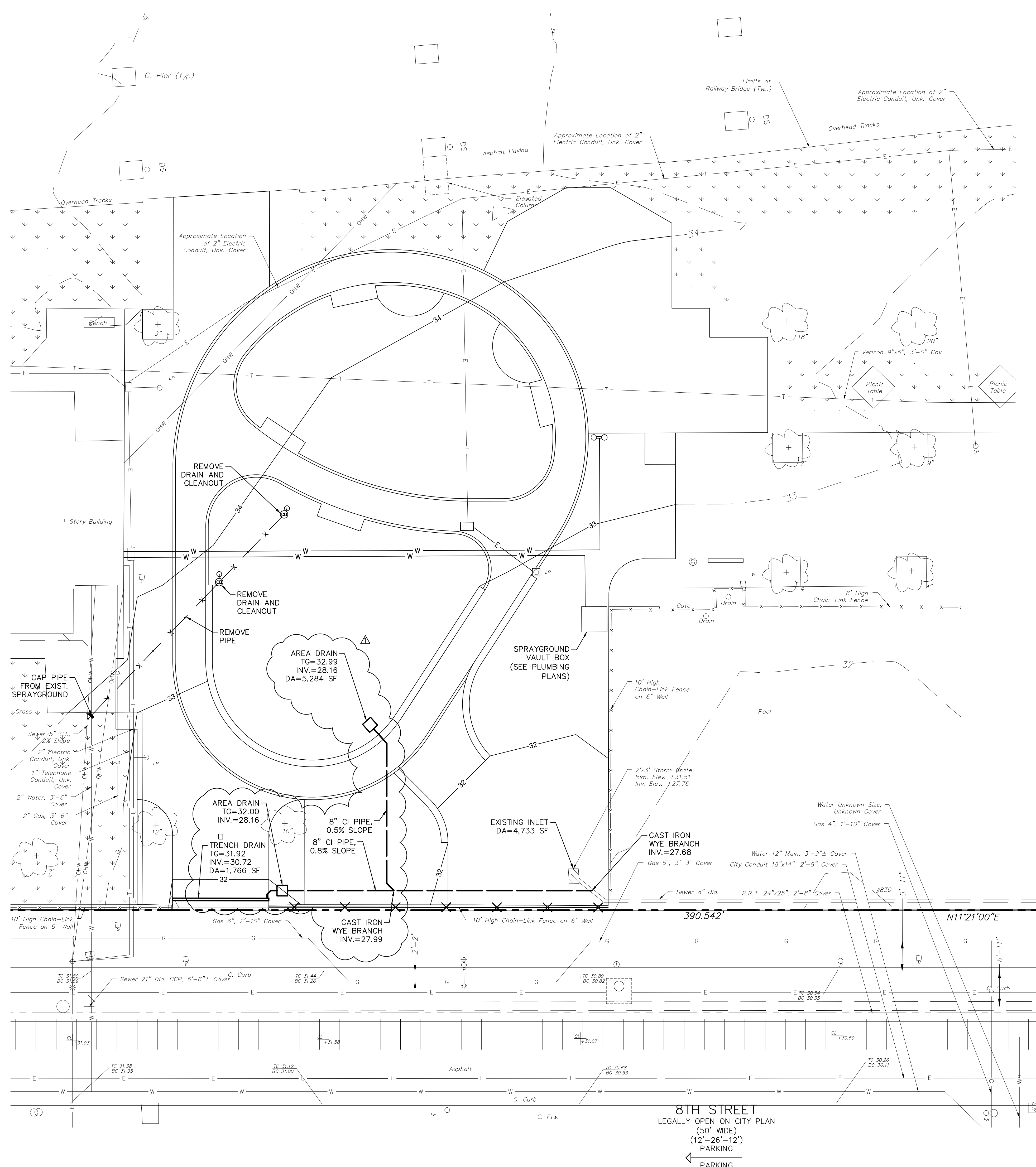
PROJECT TITLE
East Poplar Playground

DRAWING TITLE

SITE DETAILS

PROJECT NO.	DRAWING NO.
DATE: 02.07.2020	L-2.2
SCALE: AS SHOWN	
DRAWN BY: WM/JB/JJD	
CHECKED BY: JB	

NOTE: ALL DIMENSIONS AND CONDITIONS SHALL BE VERIFIED BY THE CONTRACTOR AT THE SITE BEFORE PROCEEDING WITH THE WORK.



LEGEND

EXISTING	
— G —	PROPERTY LINES
— T —	GAS LINE
— W —	TELEPHONE CONDUIT
— S —	POTABLE WATER
— E —	COMBINED SEWER
— OHW —	SANITARY SEWER
— X — X — X —	ELECTRIC CONDUIT
— X — X — X —	ELECTRIC OVERHEAD LINE
—	FENCE
—	CURB
○ U	UNKNOWN MANHOLE
○ T	TELEPHONE MANHOLE
○ S	SANITARY MANHOLE
○ W	WATER MANHOLE
○ G	WATER VALVE
○ O	GAS VALVE
○ U	UNKNOWN VALVE
○ FH	FIRE HYDRANT
☀ / ⚡	UTILITY POLE / STREET LIGHT
□ / ▨	INLET
☀	TREE WITH DBH
○ L P	LIGHT POLE
▨	GRASS COVER
PROPOSED	
— X —	CURB
— W —	PIPE REMOVAL
— E —	WATER LATERAL (SEE PLUMBING PLANS)
—	ELECTRIC CONDUIT (SEE ELECTRICAL PLANS)
—	STORM SEWER
□	AREA DRAIN

REVISIONS		
ISSUE	DATE	DESCRIPTION
△	05/06/2020	ADDENDUM 1-SWINGS



PHILADELPHIA MANETO

PROJECT COORDINATOR
Philadelphia Parks & Recreation
1515 Arch Street, 10th Floor
Philadelphia, PA 19102

SEAL



REGISTERED PROFESSIONAL ENGINEER
FRANK ANTHONY FRECA
P.E. NO. 160808
PENNSYLVANIA

Frank A. Freca
FRANK ANTHONY FRECA, P.E.

PROJECT TEAM
Landscape Architect:
Ground Reconsidered
230 South Broad Street, Suite 604
Philadelphia, PA 19102
215.790.0727 | www.groundreconsidered.com

Civil and Structural Engineer:
KS Engineers, P.C.
35 S 3rd St.
Philadelphia, PA 19106
215.925.0425 | http://www.kseng.com/

Plumbing, Electrical and Mechanical Engineer:
Arora Engineers, LLC
1600 Market St Suite 1630,
Philadelphia, PA 19103
620.459.7900 | www.aroraengineers.com/

CITY OF PHILADELPHIA
PHILADELPHIA PARKS & RECREATION
1515 ARCH STREET
11TH FLOOR, ONE PARKWAY BUILDING
PHILADELPHIA, PENNSYLVANIA

PROJECT TITLE
East Poplar Playground

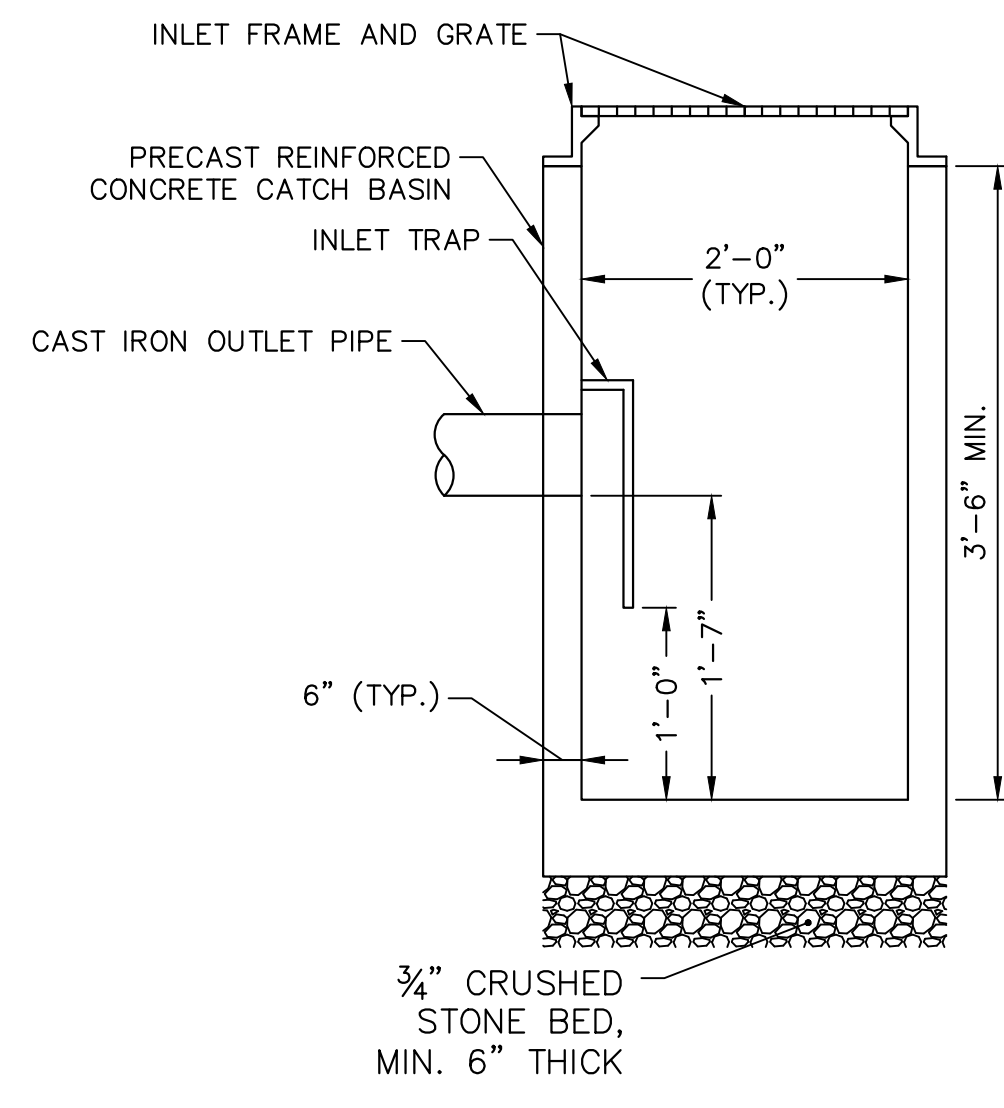
DRAWING TITLE
Drainage Plan

PROJECT NO.	DRAWING NO.
DATE: 02.07.2020	D-1
SCALE: 1" = 10'	
DRAWN BY: TV	
CHECKED BY: RB	FILE:

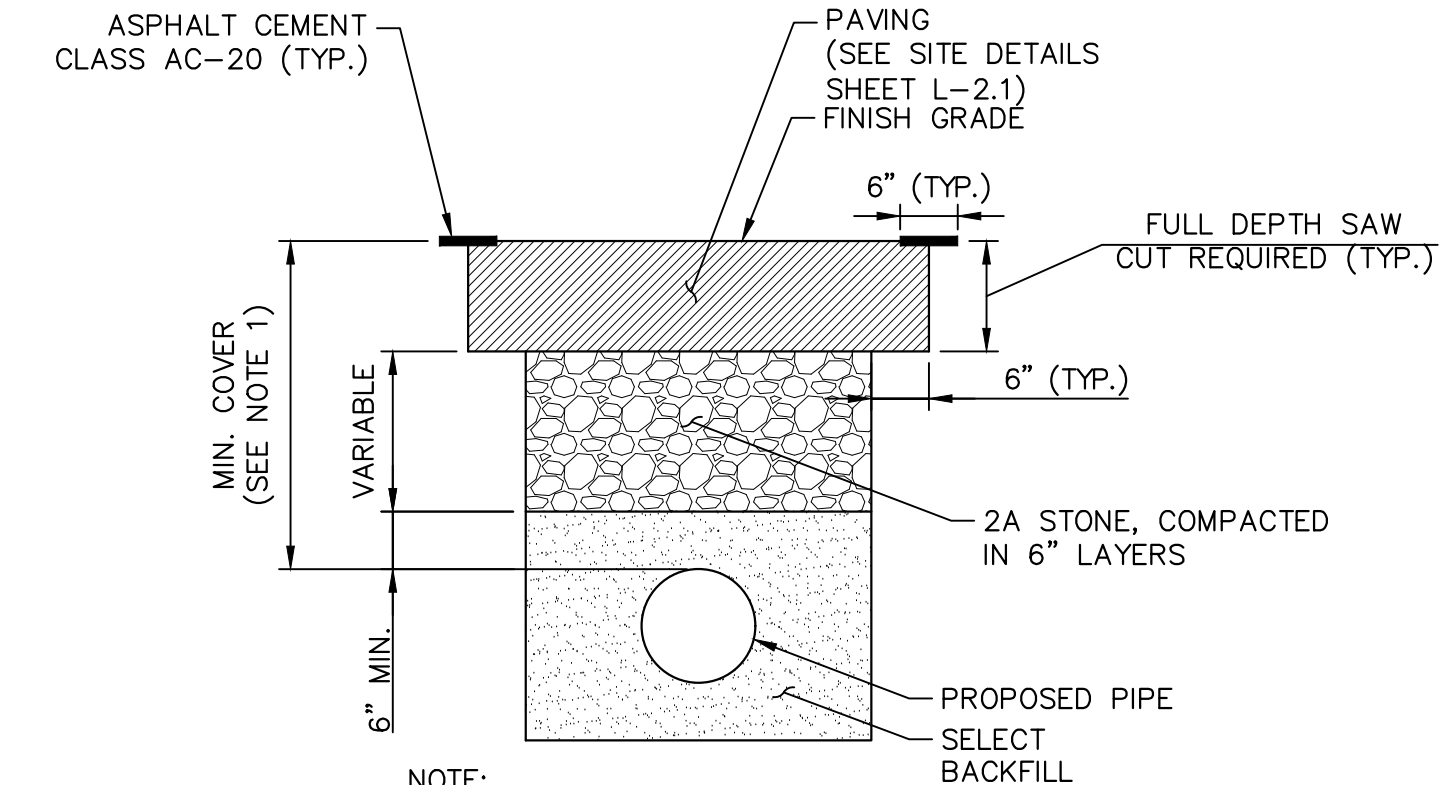
NOTE: ALL DIMENSIONS AND CONDITIONS SHALL BE VERIFIED BY THE CONTRACTOR AT THE SITE BEFORE PROCEEDING WITH THE WORK.



8TH STREET
LEGALLY OPEN ON CITY PLAN
(50' WIDE)
(12'-26'-12')
PARKING
← PARKING

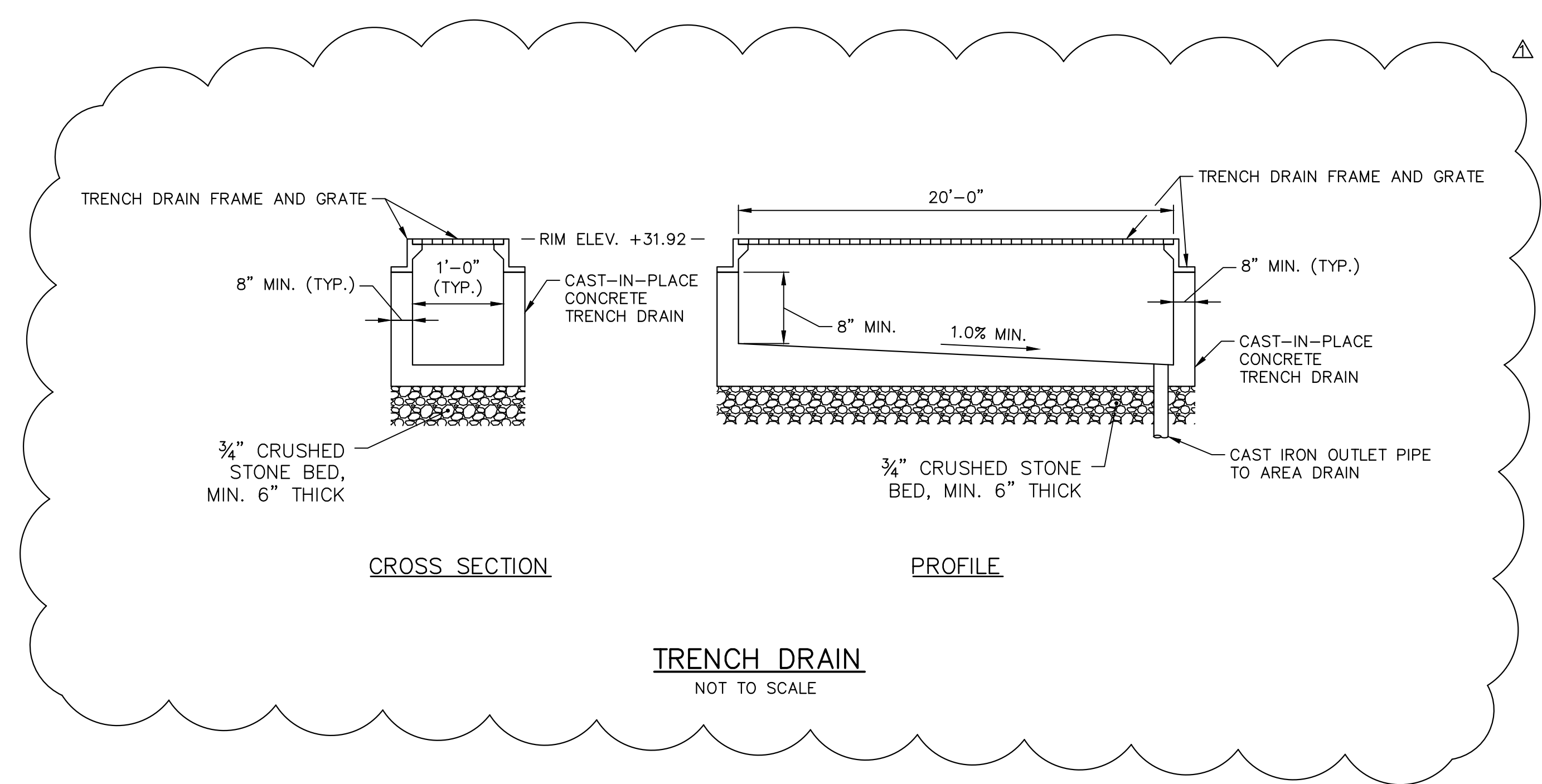


AREA DRAIN
NOT TO SCALE



- NOTE:**
1. MINIMUM COVER: NO STRUCTURE SHALL BE PLACED LESS THAN 24-INCHES BELOW THE CARTWAY OR 15-INCHES BELOW THE FOOTWAY.
 2. REPLACE ALL DISTURBED PAVEMENT MARKINGS WITH THERMOPLASTIC TAPE.
 3. PAVEMENT MARKINGS MUST BE RESTORED WITHIN 7 DAYS OF TRENCH RESTORATION.
 4. ALL RESTORATION TO BE IN ACCORDANCE WITH THE LATEST STREETS DEPARTMENT STANDARDS.

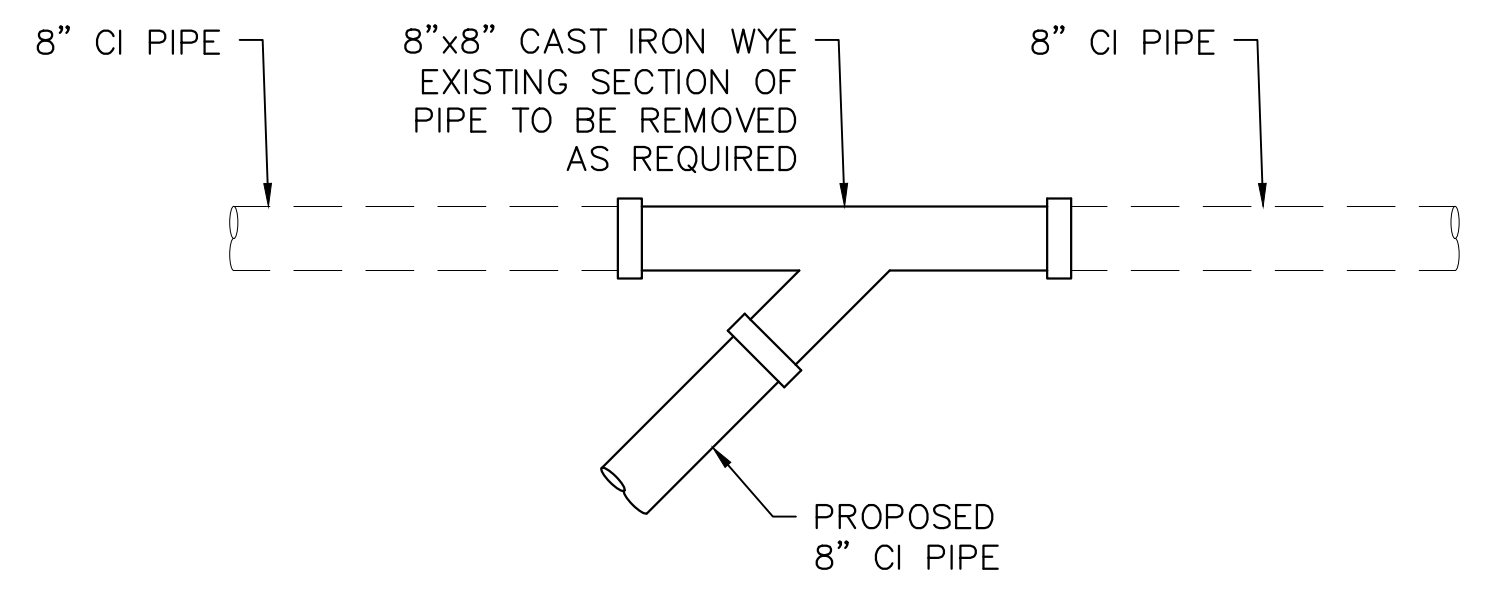
PERMANENT TRENCH RESTORATION
NOT TO SCALE



CROSS SECTION

PROFILE

TRENCH DRAIN
NOT TO SCALE



CAST IRON WYE BRANCH
NOT TO SCALE

REVISIONS		
ISSUE	DATE	DESCRIPTION
△	05/06/2020	ADDENDUM 1-SWINGS

PHILADELPHIA MANETO

PROJECT COORDINATOR
Philadelphia Parks & Recreation
1515 Arch Street, 10th Floor
Philadelphia, PA 19102

SEAL

Frank A. Freca
FRANK ANTHONY FRECA, P.E.

PROJECT TEAM
Landscape Architect:
Ground Reconsidered
230 South Broad Street, Suite 604
Philadelphia, PA 19102
215.790.0727 | www.groundreconsidered.com

Civil and Structural Engineer:
KS Engineers, P.C.
35 S 3rd St.
Philadelphia, PA 19106
215.925.0425 | http://www.kseng.com/

Plumbing, Electrical and Mechanical Engineer:
Arora Engineers, LLC
1600 Market St Suite 1630,
Philadelphia, PA 19103
620.459.7900 | www.aroraengineers.com/

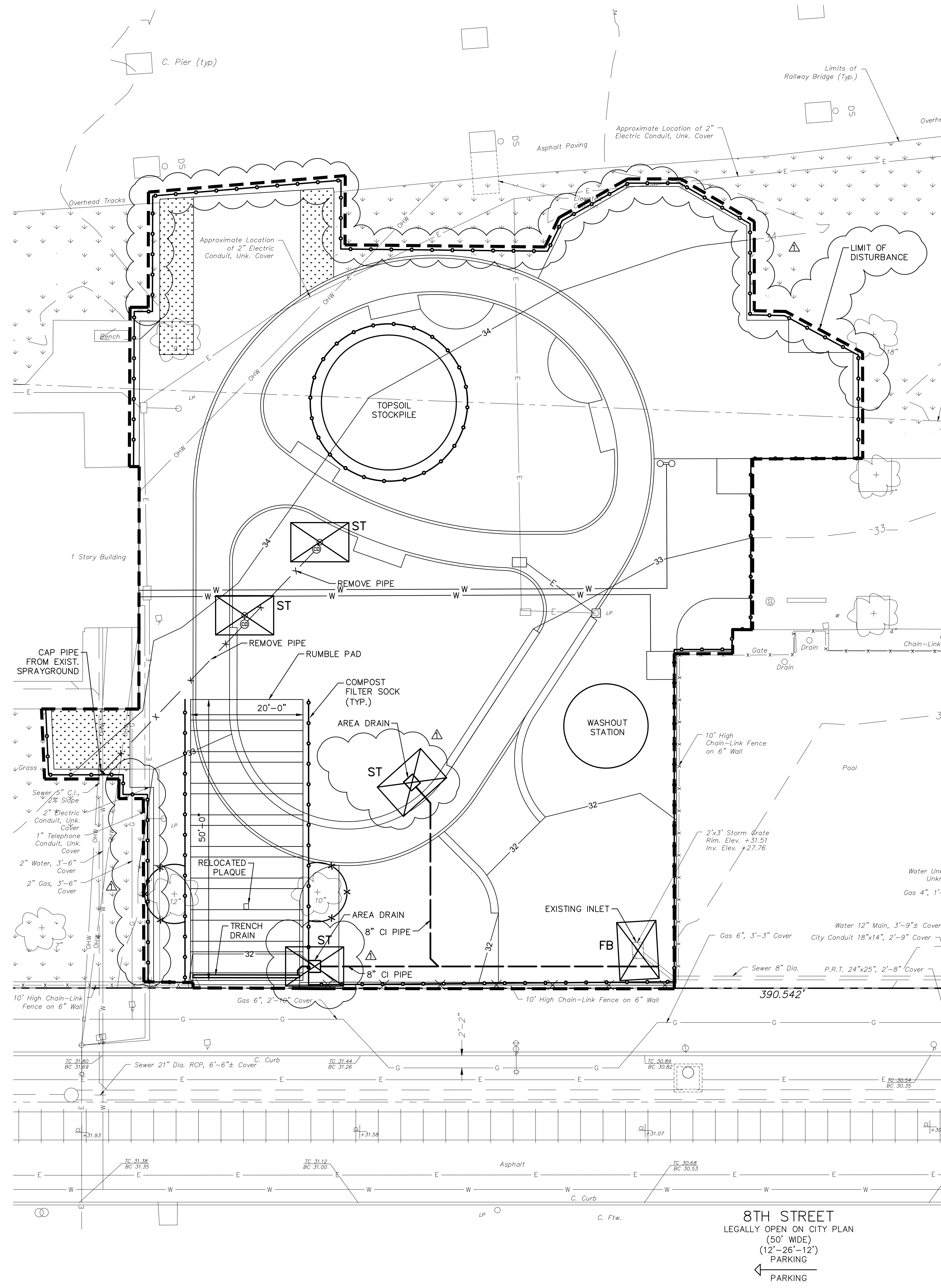
CITY OF PHILADELPHIA
PHILADELPHIA PARKS & RECREATION
1515 ARCH STREET
11TH FLOOR, ONE PARKWAY BUILDING
PHILADELPHIA, PENNSYLVANIA

PROJECT TITLE
East Poplar Playground

DRAWING TITLE
Drainage Details

PROJECT NO.	DRAWING NO.
DATE: 02.07.2020	D-2
SCALE: 1" = 10'	
DRAWN BY: TV	
CHECKED BY: RB	

NOTE: ALL DIMENSIONS AND CONDITIONS SHALL BE VERIFIED BY THE CONTRACTOR AT THE SITE BEFORE PROCEEDING WITH THE WORK.



PROTECT YOURSELF



WHAT YOU DON'T KNOW CAN HURT YOU.

CALL BEFORE YOU DIG!
PENNSYLVANIA LAW REQUIRES 3 WORKING DAYS NOTICE FOR CONSTRUCTION PHASE & 10 WORKING DAYS IN DESIGN STAGE
Pennsylvania One Call System, Inc.
1-800-242-1776

ACT 187
IT IS THE CONTRACTOR'S RESPONSIBILITY TO COMPLY WITH THE PENNSYLVANIA ACT 187 AND TO CONTACT THE "ONE CALL SYSTEM" THREE (3) WORKING DAYS (UNLESS OTHERWISE NOTED) PRIOR TO START OF CONSTRUCTION.
PENNSYLVANIA ONE CALL: 1-800-242-1776

PHILADELPHIA WATER DEPARTMENT 1101 MARKET STREET, 2ND FLOOR PHILADELPHIA, PENNSYLVANIA 19107 (215) 685-6270	VERIZON 900 RACE STREET PHILADELPHIA, PENNSYLVANIA 19107 (215) 351-8947
PHILADELPHIA GAS WORKS 800 W. MONTGOMERY AVENUE, 3RD FLOOR PHILADELPHIA, PENNSYLVANIA 19122 (215) 684-6796	COMCAST 1351 S. COLUMBUS BOULEVARD PHILADELPHIA, PENNSYLVANIA 19147 (215) 952-4935
PECO-CONSTRUCTION DEPARTMENT 2301 MARKET STREET PHILADELPHIA, PENNSYLVANIA 19103 (215) 731-3264	

SITE DISTURBANCE SUMMARY

LOD ON SITE	14,990 S.F.	0.34 ACRES
LOD WITHIN PUBLIC R.O.W.	0 S.F.	0.00 ACRES
TOTAL:	14,990 S.F.	0.34 ACRES

SOIL SYMBOL	SOIL DESCRIPTION	% OF SITE	RUNOFF CLASS	HYDRIC SOIL	SLOPE RANGE	DEPTH
Ub	URBAN-LAND	100.00%	VERY HIGH	NO	0-8%	0"-10"

EROSION AND SEDIMENT CONTROL LEGEND

PROPOSED ESC MEASURES

- LIMIT OF DISTURBANCE (LOD)
- COMPOST FILTER SOCK
- FB [Symbol] FILTER BAG INLET PROTECTION
- ST [Symbol] STONE AND CONCRETE BLOCK INLET PROTECTION
- [Symbol] RUMBLE PAD CONSTRUCTION ENTRANCE

NOTES:

- EXISTING CONCRETE AND BITUMINOUS PAVING TO BE SAW-CUT ALONG LIMIT OF DISTURBANCE LINE WITH A CLEAN CUT LINE TO A SUFFICIENT DEPTH TO ALLOW THE REMOVAL OF PAVING WITHOUT DISTURBING THE EXISTING PAVING THAT IS TO REMAIN.
- ALL EXISTING FILL TO BE REMOVED FROM SITE IN ACCORDANCE WITH THE PA DEP MANAGEMENT OF FILL POLICY AND REGULATIONS.
- COMPOST FILTER SOCK ON PAVING TO BE WEIGHTED DOWN BY OBJECTS OF CONSIDERABLE MASS (SAND BAGS, CONCRETE BLOCK OR OTHER SUITABLE MATERIAL).
- INLET PROTECTION IN ROADWAYS NOT TO INCLUDE STONE OR BERMS FOR ROADWAY MAINTENANCE PURPOSES.
- MAXIMUM HEIGHT FOR STOCKPILE AREAS TO BE 20 FEET. THE MAXIMUM SIDE SLOPE FOR STOCKPILE AREAS NOT TO EXCEED 2:1.
- CONSTRUCTION, DEMOLITION AND EARTHWORK DUST CONTROL TO BE COMPLETED IN ACCORDANCE WITH THE CITY OF PHILADELPHIA DUST CONTROL REQUIREMENTS (AIR MANAGEMENT REGULATION (AMR) II. SECTION IX.) AND TO INCLUDE BUT NOT LIMITED TO:
 - NOTIFY OCCUPANTS OF NEARBY PROPERTIES, IN WRITING 10 DAYS BEFORE ENGAGING IN EARTHWORK, CONSTRUCTION AND DEMOLITION ACTIVITIES.
 - USE OF VACUUM OR SIMILAR SUCTION SYSTEMS TO CAPTURE DUST KICKED UP BY POWER TOOLS WHEN GRINDING OR CUTTING.
 - APPLICATION OF WATER OR APPROVED DUST CONTROL SUPPRESSANT DURING EXCAVATION, DEMOLITION AND/OR CONSTRUCTION TO SUPPRESS DUST FORMATION.
 - COVERING AND WETTING OF STOCKPILES OF EARTH, SAND, GRAVEL AND OTHER SIMILAR CONSTRUCTION MATERIALS.
 - ALL PERIMETER FENCING MUST HAVE DUST CONTROL FABRIC AND MUST MEASURE A MINIMUM OF 5 FEET IN HEIGHT FROM THE BOTTOM OF FENCING.
 - 10 MILE PER HOUR SPEED LIMIT FOR ALL EQUIPMENT AND TRUCKS TRAVELING WITHIN THE WORK SITE.
 - WETTING AND SWEEPING OF ROADWAYS / ACCESS ROAD IN A WORK SITE TO PREVENT DUST FORMATION.

REVISONS

ISSUE	DATE	DESCRIPTION
Δ	05/06/2020	ADDENDUM 1-SWINGS

PROJECT COORDINATOR
Philadelphia Parks & Recreation
1515 Arch Street, 10th Floor
Philadelphia, PA 19102

SEAL

PROJECT TEAM
Landscape Architect:
Ground Reconsidered
230 South Broad Street, Suite 604
Philadelphia, PA 19102
215.790.0727 | www.groundreconsidered.com

Civil and Structural Engineer:
KS Engineers, P.C.
35 S 3rd St.
Philadelphia, PA 19106
215.925.0425 | http://www.kseng.com/

Plumbing, Electrical and Mechanical Engineer:
Arora Engineers, LLC
1600 Market St Suite 1630
Philadelphia, PA 19103
620.459.7900 | www.aroraengineers.com/

CITY OF PHILADELPHIA
PHILADELPHIA PARKS & RECREATION
1515 ARCH STREET
11TH FLOOR, ONE PARKWAY BUILDING
PHILADELPHIA, PENNSYLVANIA

PROJECT TITLE
East Poplar Playground

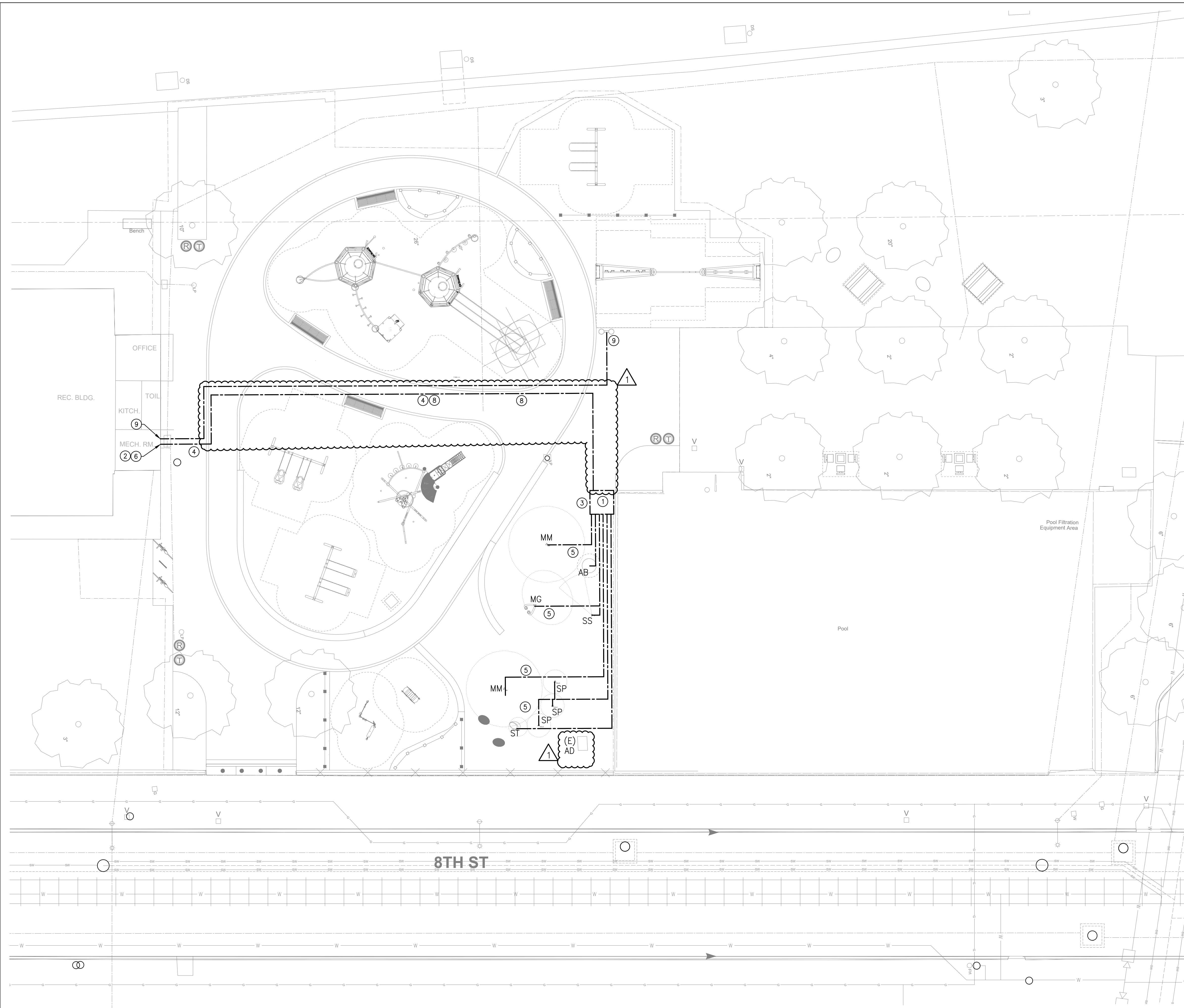
DRAWING TITLE
Erosion & Sediment
Pollution Control Plan

PROPERTY ADDRESS:
800 N. 8TH STREET
PHILADELPHIA, PA 19123-2000
OPA/BRT #: 781561500

OWNER:
CITY OF PHILADELPHIA
EAST POPLAR PLAYGROUND
DEPARTMENT OF RECREATION
ROOM 625
1600 ARCH STREET
PHILADELPHIA, PA 19103-2003

PROJECT NO.	DRAWING NO.
DATE: 02.07.2020	ES-1
SCALE: 1"=10'	
DRAWN BY: TV	
CHECKED BY: RB	FILE:

NOTE: ALL DIMENSIONS AND CONDITIONS SHALL BE VERIFIED BY THE CONTRACTOR AT THE SITE BEFORE PROCEEDING WITH THE WORK.



1 PLUMBING SITE PLAN - NEW WORK
P-3 NOT TO SCALE

REVISIONS		
ISSUE	DATE	DESCRIPTION
△	05/06/2020	ADDENDUM 1-SWINGS



PROJECT COORDINATOR
Philadelphia Parks & Recreation
1515 Arch Street, 10th Floor
Philadelphia, PA 19102

SEAL



PROJECT TEAM
Landscape Architect:
Ground Reconsidered
230 South Broad Street, Suite 604
Philadelphia, PA 19102
215.790.0727 | www.groundreconsidered.com

Civil and Structural Engineer:
KS Engineers, P.C.
35 S 3rd St.
Philadelphia, PA 19106
215.925.0425 | http://www.kseng.com/

ARORA Engineers, Inc.
61 Wilmington-West Chester Pike
Chadds Ford, PA 19317
P (610) 459-7900 | F (610) 459-7950 | aroraengineers.com

CITY OF PHILADELPHIA
PHILADELPHIA PARKS AND RECREATION
1515 ARCH STREET
11TH FLOOR, ONE PARKWAY BUILDING
PHILADELPHIA, PENNSYLVANIA

PROJECT TITLE
East Poplar Playground

DRAWING TITLE
PLUMBING SITE PLAN NEW WORK

PROJECT NO.	DRAWING NO.
DATE: 02.07.2020	P-3
SCALE: 1" = 10'	
DRAWN BY: DAG	
CHECKED BY: DM	

NOTE: ALL DIMENSIONS AND CONDITIONS SHALL BE VERIFIED BY THE CONTRACTOR AT THE SITE BEFORE PROCEEDING WITH THE WORK.

GENERAL NOTES:

1. THE EXISTING BUILDING ALONG WITH ASSOCIATED WALKWAYS AND SUPPORTING INFRASTRUCTURE IS SHOWN AS EXISTING CONDITIONS FOR REFERENCE. SEE ARCHITECTURAL AND CIVIL ENGINEERING PLANS FOR DETAILS OF THESE PROPOSED IMPROVEMENTS.
2. REFER TO DRAWING P-1 FOR GENERAL NOTES, SYMBOLS AND ABBREVIATIONS.
3. PROVIDE 2% SLOPE FOR ALL DOMESTIC WATER PIPING TO LOW POINT AT CONCRETE MANIFOLD BOX TO FACILITATE SYSTEM WINTERIZATION.
4. PROVIDE GROUNDING TO ALL SPRAY FEATURES PER MANUFACTURER. REFER TO ELECTRICAL DRAWINGS.
5. REFER TO RISER DIAGRAM ON DRAWING P-4 FOR WATER SUPPLY AND PIPE SIZING.
6. FIELD COORDINATE LOCATION OF NEW PIPE WITH UNDERGROUND UTILITIES, INCLUDING, BUT NOT LIMITED TO NEW ELECTRICAL DUCT BANK.

KEYED NOTES:

- ① PROVIDE SHUT OFF VALVE AND CONCRETE MANIFOLD BOX FOR SPRAY AREA TO FACILITATE MAINTENANCE.
- ② SPRAY GROUND WATER SERVICE SHALL HAVE A NEW, DEDICATED BACK FLOW PREVENTER (BFP). FIELD VERIFY NEW TIE IN LOCATION IN MECHANICAL ROOM.
- ③ REFER TO RISER DIAGRAM DRAWING P-4 FOR PIPE SIZES TO SPRAY FEATURES ON EACH PIPE BRANCH.
- ④ LOCATE AND COORDINATE ALL EXISTING UNDERGROUND PIPE, CONDUIT ETC. PRIOR TO INSTALLATION OF SPRAYGROUND PIPE.
- ⑤ SPRAYGROUND PIPE SHALL SLOPE TO MANIFOLD VAULT FROM SPRAYGROUND TO ALLOW FOR SYSTEM WINTERIZATION.
- ⑥ COORDINATE CONTROL PANEL LOCATION WITH ELECTRICAL DRAWING E-3 AND ARCHITECTURAL PLANS. PROPOSED LOCATION FOR CONTROL PANEL IS IN MECHANICAL ROOM.
- ⑦ (NOTE DELETED PER ADDENDUM 1)
- ⑧ FIELD COORDINATE PIPE LOCATION WITH FOOTINGS FOR WALLS, EQUIPMENT, LANDSCAPE FEATURES, ETC.
- ⑨ RUN NEW 3/4" DOMESTIC WATER TO PLAYGROUND DRINKING FOUNTAIN. PIPE MUST BE RUN 3' MINIMUM BELOW GROUND SURFACE. REFER TO L-1.1 FOR DRINKING FOUNTAIN MODEL.